



SPECIFICATIONS:

SDX100 (E)

SDX130 (E)

SDX150 (E)



Optional equipment may be shown



DESCRIPTION

Heavy duty mobile tracked stockpiling conveyor with the following features:

- 36" (900 mm) wide heavy-duty telescoping conveyor.
- Counterweighted design keeps the axle out of stockpile
- 3-position axle (Inline/Transverse/Radial)
- Wheel drive on lift axle
- Full automation package
- Integral king pin/pivot point

DIMENSIONS AND WEIGHTS

SPEC	SDX100	SDX130	SDX150
WORKING MODE			
Length	31.00 m (101' – 8½")	40.69 m (133' – 6")	46.68 m (153' – 2")
Width	5.78 m (18' – 11½")	6.40 m (21' – 0")	6.40 m (21' – 0")
Height	13.25 m (43' – 5½")	15.49 m (50' – 10")	17.36 m (56' – 11½")
TRANSPORT MODE			
Length	19.56 m (64' – 2")	23.14 m (75' – 11")	25.77 m (84' – 6½")
Width	3.48 m (11' – 5")	3.82 m (12' – 6½")	3.82 m (12' – 6½")
Width (Axle Wheels Removed)	3.29 m (10' – 9½")	3.35 m (11' – 0")	3.35 m (11' – 0")
WEIGHT (approximate)	24,000 kg (53,000 lb)	30,800 kg (68,000 lb)	37,750 kg (83,250 lb)

CONVEYORS

SPEC	OUTER CONVEYOR	INNER CONVEYOR
Belt width	900 mm (36")	900 mm (36")
Belt length (drum centers):		
SDX100	17.53 m (57' – 6")	13.26 m (43' – 6")
SDX130	21.43 m (70' – 4")	19.28 m (63' – 3")
SDX150	23.59 m (77' – 5")	22.62 m (74' – 3")
Belt spec	Heavy Duty Plain – 3ply – 1/4 X 1/16	
Drive drum diameter	406 mm (16")	406 mm (16")
Head drum diameter	355 mm (14")	355 mm (14")
Idlers:		
Conveyor	35 Degree – Cema B	35 Degree – Cema B
Return	Self-Cleaning Rubber Disc – Cema C	Self-Cleaning Rubber Disc – Cema C
Under hopper	35 Degree Impact – Cema C	<u>N/A</u>
Pulley adjuster	Screw-type	Screw-type
Scraper	Urethane blade	Urethane blade



POWER UNIT AND HYDRAULICS

SPEC	DIESEL MACHINE	ELECTRIC MACHINE
Engine/Motor:		
SDX100	CAT3.4 T4F – 74 kW (100hp)	WEG 20 hp
SDX130	CAT4.4 T4F – 98 kW (130 hp)	WEG 20 hp
SDX150	CAT4.4 T4F – 98 kW (130 hp)	WEG 20 hp
Drive type	Hydraulic head drive	Electric head drive
Engine/motor speed	2200 rpm	1800 rpm
Outer conveyor motor	<ul style="list-style-type: none"> ▪ OMV 630 dual-head ▪ Eaton Vis40 single-head 	WEG 40 hp 1770 rpm (X1)
Inner conveyor motor	Eaton Vis40	WEG 15 hp 1800 rpm (X2)
Winch motor	Eaton S-series 46 cu.in	Eaton S-series 46 cu.in
Auxiliary power unit	N/A	Honda GX390 (Option)
Hydraulic tank capacity:		
SDX100	440 L (116 US gal)	189 L (50 US gal)
SDX130 / SDX150	584 L (154 US gal)	189 L (50 US gal)
Diesel tank capacity:		
SDX100	330 L (87 US gal)	N/A
SDX130 / SDX150	386 L (101 US gal)	N/A
Hydraulic oil cooler	Yes	Yes

CAPACITIES

SPEC	SDX100	SDX130	SDX150
Stockpile height	12.2 m (40')	14.6 m (48')	15.8 m (52')
Stockpile capacity	3342 m ³ (4371 yd ³)	5775 m ³ (7554 yd ³)	7343 m ³ (9604 yd ³)
Production (standard)	800 TPH	800 TPH	800 TPH

AXLES

Working Axle:

Type	Lift Axle
Wheels and tires	385 Outriggers
Wheel drive	Hydraulic

Transport Axle:

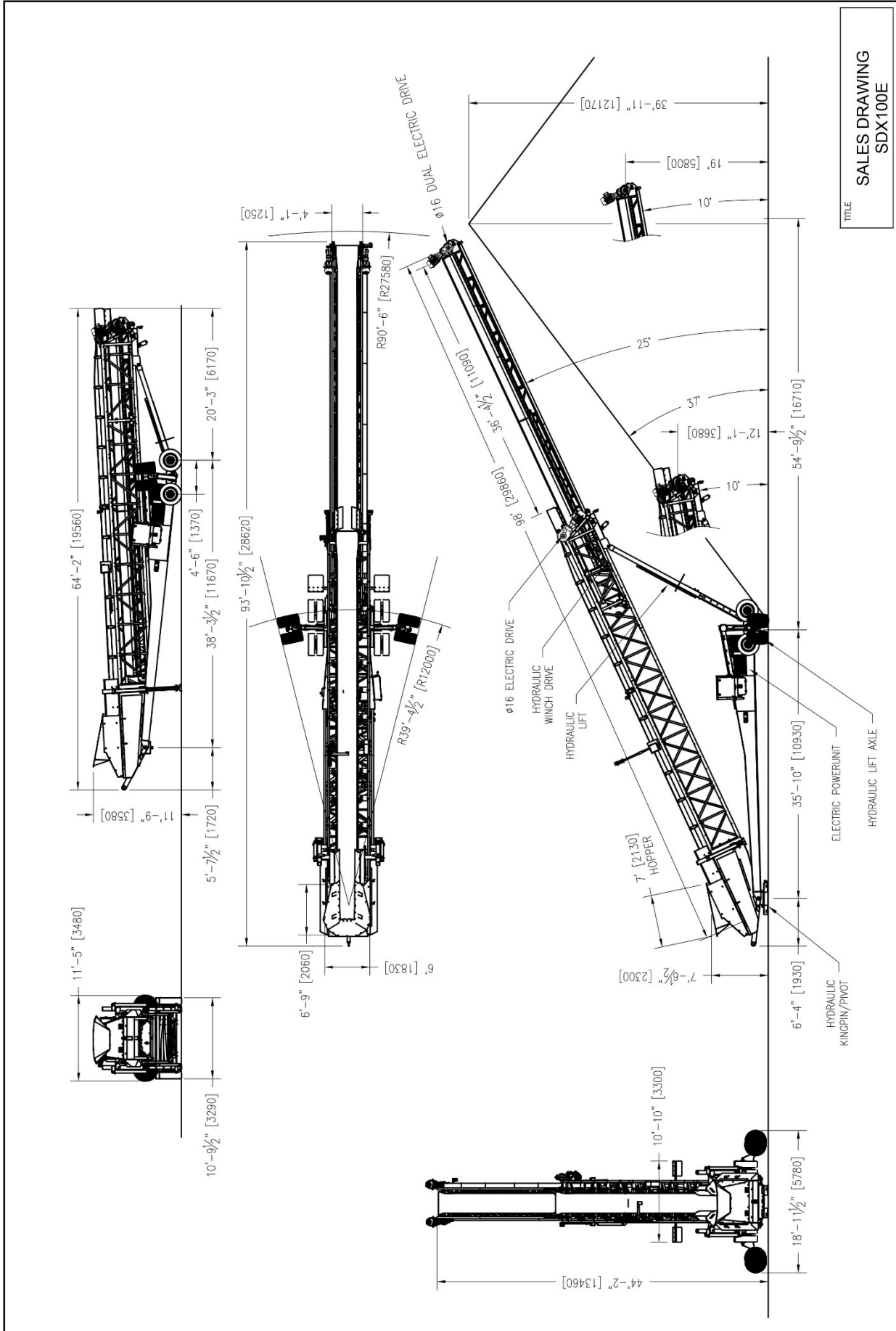
Type	Walking beam
Wheels and tires	8X11R22.5
Wheel drive	Twin reducer style
Brakes	Air brakes

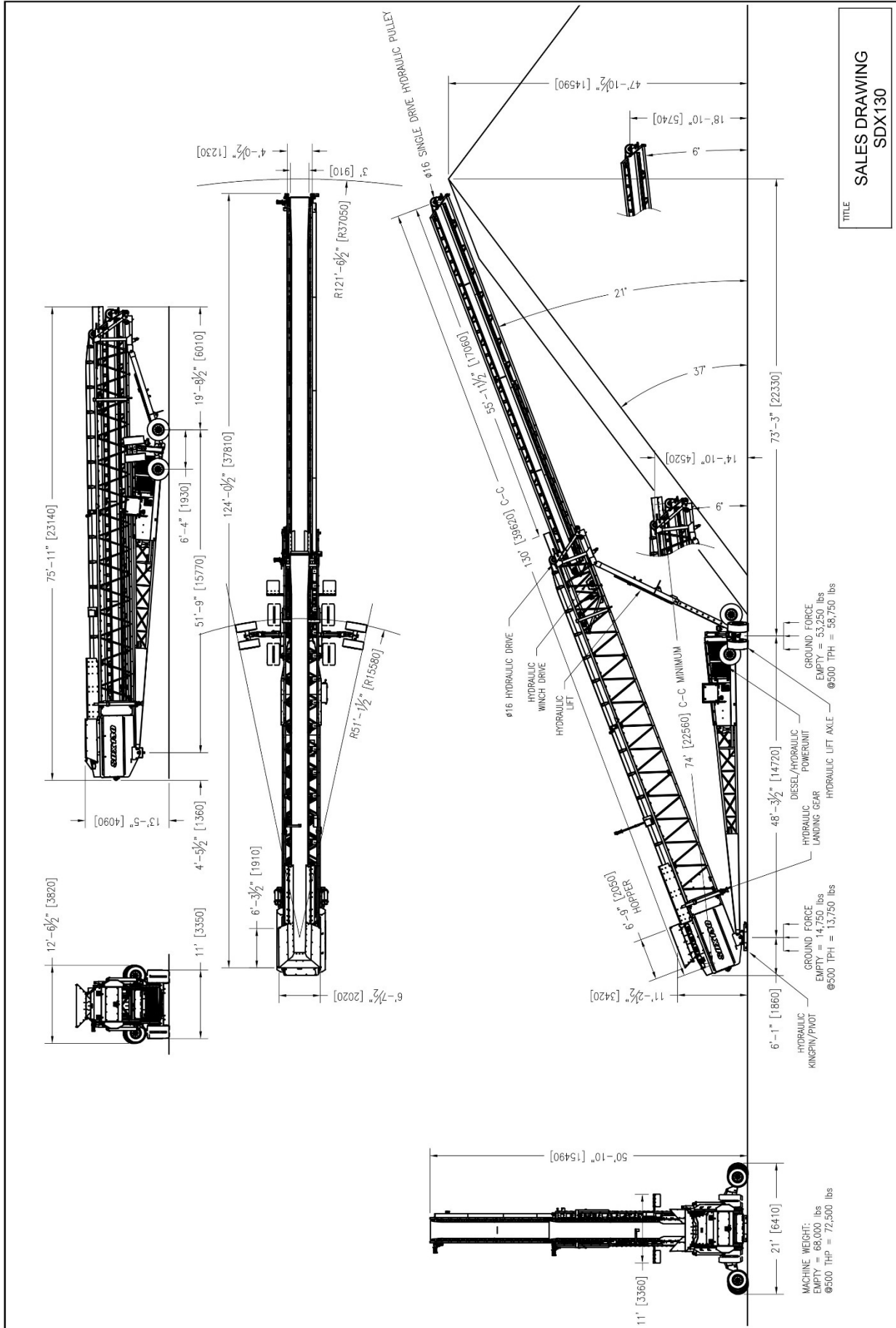
**SAFETY FEATURES**

- Engine safety shutdown systems
- External belt alignment points
- External grease points
- Full safety guarding for nip points

OPTIONS

- Electric machine
- V-Bin hopper
- Track bogie
- Third/Tag axle
- Magnetic separator
- Asgco scraper
- Paddle wheel





TITLE
SALES DRAWING
SDX130

