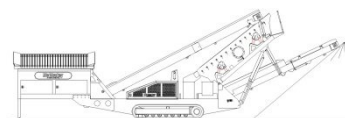


SPECIFICATIONS



McCloskey ***S130 3-Deck***

**DESCRIPTION**

Heavy duty mobile screener with following features:

- 14x5 heavy duty high energy 2 bearing 3 deck screenbox.
- 100Hp Cat engine.
- Track or wheel mobile.
- Integrated hydraulic folding stockpiling conveyors.
- 3 Deck auxiliary conveyor attaches to machine for one unit transport.
- Remote control tipping grid.
- Fast on site setup time – 10 minutes.

DIMENSIONS AND WEIGHTS**Length – transport**

(Please see last page)

12ft Hopper 15.61m (51' - 2")

15ft hopper 16.52m (54'2")

Width – transport

500mm aux conv 3.060m (9' - 10")

650mm Aux conv. 3.24m (10'8")

Height - transport 3 deck track 3.45m (11' - 4")

Height - transport 3 deck wheel 3.73m (12' - 3")

Weight - track 29,000 Kgs (63,933 lbs) - estimated

Weight - wheel 25,000 Kgs (55,115 lbs) - estimated

CAPACITIES

Diesel tank capacity 399 L (105 US gal)

Hydraulic tank capacity 630 L (166 Gals)

Capacity - 12ft hopper 8.01 m³ (10.48 yd³)

FEED CONVEYOR

Belt width 1200mm (48")

Belt spec Plain 500/3 6+3

Drive drum dia. 335mm (13.1")

Tail drum dia. 320mm (12.5")

Gearbox Bonfig 805 W2

Gearbox ratio 24.2

Gearbox torque 7000Nm cont, 12500Nm max

Motor Danfoss OMSS160

Flow rate 50.6 Lpm (13.4gpm)

Adjustable speed YES

13.1 rpm

MAIN CONVEYOR

Maximum speed

Belt width 1050mm (42")

Belt spec Plain 400/3 6+1.5

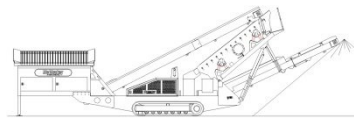
Drive drum dia. 285mm (11.2")

Tail drum dia. 270mm (10.6")

Motor Danfoss OMV630

Flow rate 72.6 Lpm (19.2gpm)

Adjustable speed OPTION



Maximum speed 115.2 rpm

TAIL CONVEYOR

Stockpile height - track model	3871mm (12' - 8")
Stockpile height - wheel model	4139mm (13' - 7")
Belt width	1200mm (48")
Belt spec	Plain - 400/2 6+1.5
Drive drum dia.	285mm (11.2")
Tail drum dia.	270mm (10.6")
Motor	Danfoss OMT400
Flow rate	72.6 Lpm (19.2gpm)
Maximum speed	115.2 rpm

SIDE CONVEYOR

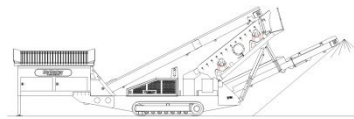
Stockpile height - track model	4600mm (15' - 1")
Stockpile height - wheel model	4870mm (15' - 11")
Belt width	650mm (26")
Belt spec	Chevron - 400/3 6+1.5
Drive drum dia.	285mm (11.2")
Tail drum dia.	270mm (10.6")
Motor	OMT400
Flow rate	50.6 Lpm (11.1 gpm)
Adjustable speed	YES
Maximum speed	126.5 rpm

3 DECK TRANSFER CONVEYOR

Belt width	650mm (26")
Belt spec	Plain 400/3 4+2
Drive drum dia.	200mm (8")
Tail drum dia.	200mm (8")
Motor	OMT400
Flow rate	50.6 Lpm (11.1 gpm)
Adjustable speed	YES
Maximum speed	126.5 rpm

3 DECK AUXILLARY CONVEYOR

Stockpile height - track model	4700mm (15.5')
Belt width	650mm (26") Option 500mm (20")
Belt spec	Chevron - 400/3 6+1.5
Drive drum dia.	290mm (11.5")
Tail drum dia. (Spoked)	270mm (10.6")
Motor	OMT400
Flow rate	50.6 Lpm (11.1 gpm)
Adjustable speed	YES
Maximum speed	126.5 rpm

**SCREENBOX**

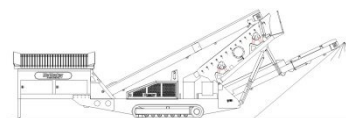
Dimensions - top deck	4270mm x 1524mm (14' x 5')
Dimensions - middle deck	4270mm x 1524mm (14' x 5')
Dimensions - bottom deck	3660mm x 1524mm (12' x 5')
Bearing type 3 Deck	NSK/RHP 22319 - 95mm bore
Screens - top deck	5' x 4' side tension - 3 off & 5' x 2' side tension - 1 off
Screens - middle deck	5' x 4' side tension - 3 off & 5' x 2' side tension - 1 off
Screens - bottom deck	5' x 6' end tension - 2 off
Tensioning - top deck	Quick release pin and wedge
Tensioning - middle deck	Quick release pin and wedge
Tensioning - bottom deck	Curved tension bar and adjuster
Screen angle	25 to 34 deg
Screen motor	DBH MCC2208 (58.9cc/rev)
Drive system	Direct drive with HRC180 coupling
Hydraulic flowrate	72.6 Lpm (19.2gpm)
Speed adjustable	YES - Pressure compensated FCV
Screen stroke adjustable	6 - 10mm maximum
Screen shaft speed	1130 - 950 rpm
Screen 'g' force	4.29 - 5.05

POWERUNIT AND HYDRAULICS

Engine	CAT 4.4 C DIT (Tier III)
Engine power	100 HP
Engine speed	2200 rpm
Flywheel Pump 1	DBH 5033,5033,5023
LH PTO Pump 2	DBH 5023,5023
RH PTO Pump 3	DBH 2SPA11
Total system flow	339 L (89.5 US Gpm)
Hydraulic tank capacity	630 L (166 US Gals)
Hydraulic tank ratio	1.85 : 1
Hydraulic Oil cooler	YES

ELECTRICS

Emergency stops	6 off, 1 feeder, 2 powerunit RH&LH, 2 chassis front RH&LH, 1 Walkway
Chassis cabling	Armored cable
Start Siren	YES - 10 sec delay
Engine shutdowns:	Low oil pressure High water temp Air filter blockage (selectable) Fuel contamination Low hydraulic tank level
Engine room light	YES
Remote tipping grid	YES - 2 function timed
Radio control tracks	optional - Hetric system
Pendant track control	YES - plugged in at feeder end

**TRACKS**

Width	500mm (19.7")
Length	2920mm (9' - 7") crs
Height	739mm (29.4")
Gearbox	Bonfiglioli 707
Ratio	122:1
Motor	Rexroth 63
Speed max	1.32 Kph (0.82 Mph)
Flow rate	72.6 Lpm (19.2gpm)
Dual speed	TBC
Attachment to chassis	Bolt On for quick change

WHEELS

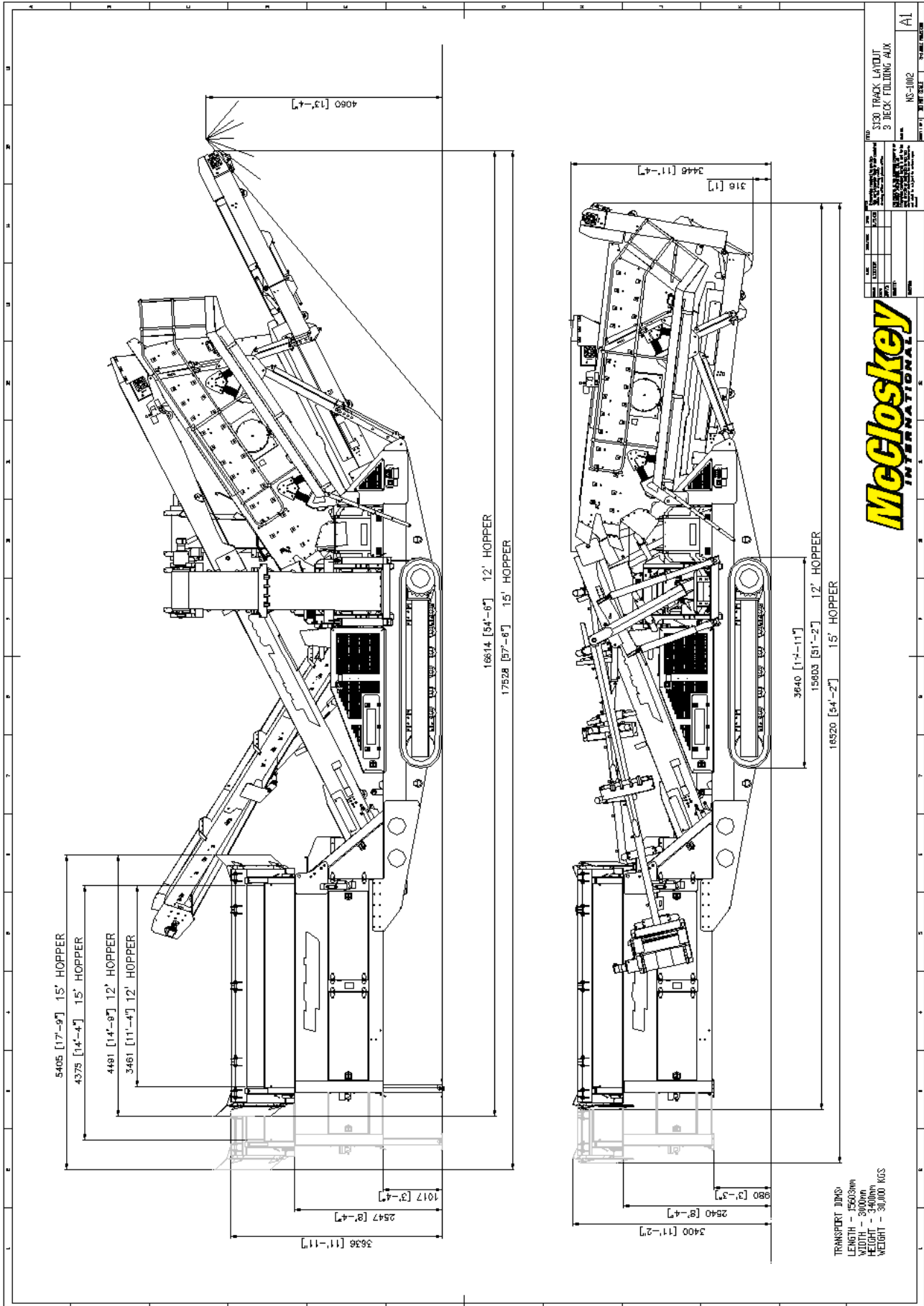
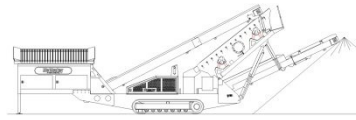
Width	2900mm (9' - 6")
Axle centers	1360mm (4' - 6")
Wheels	235/75/R17.5 dual
Axles	2 off
Brakes	YES
Spring suspension	YES
Mudguards	YES
Handbrake	OPTION
ABS	OPTION

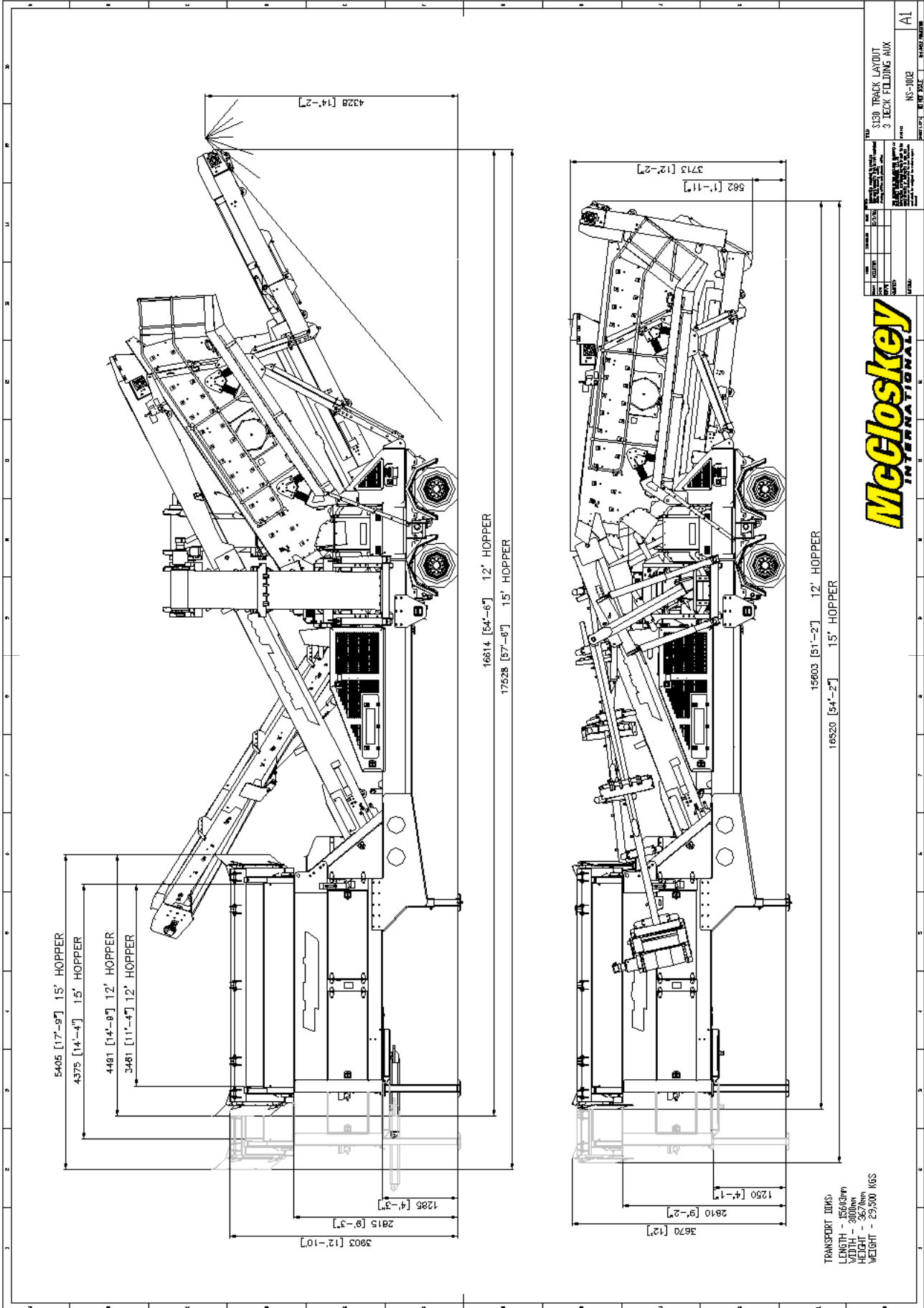
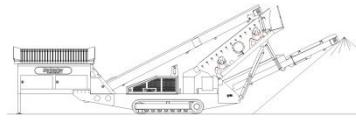
OPTIONS

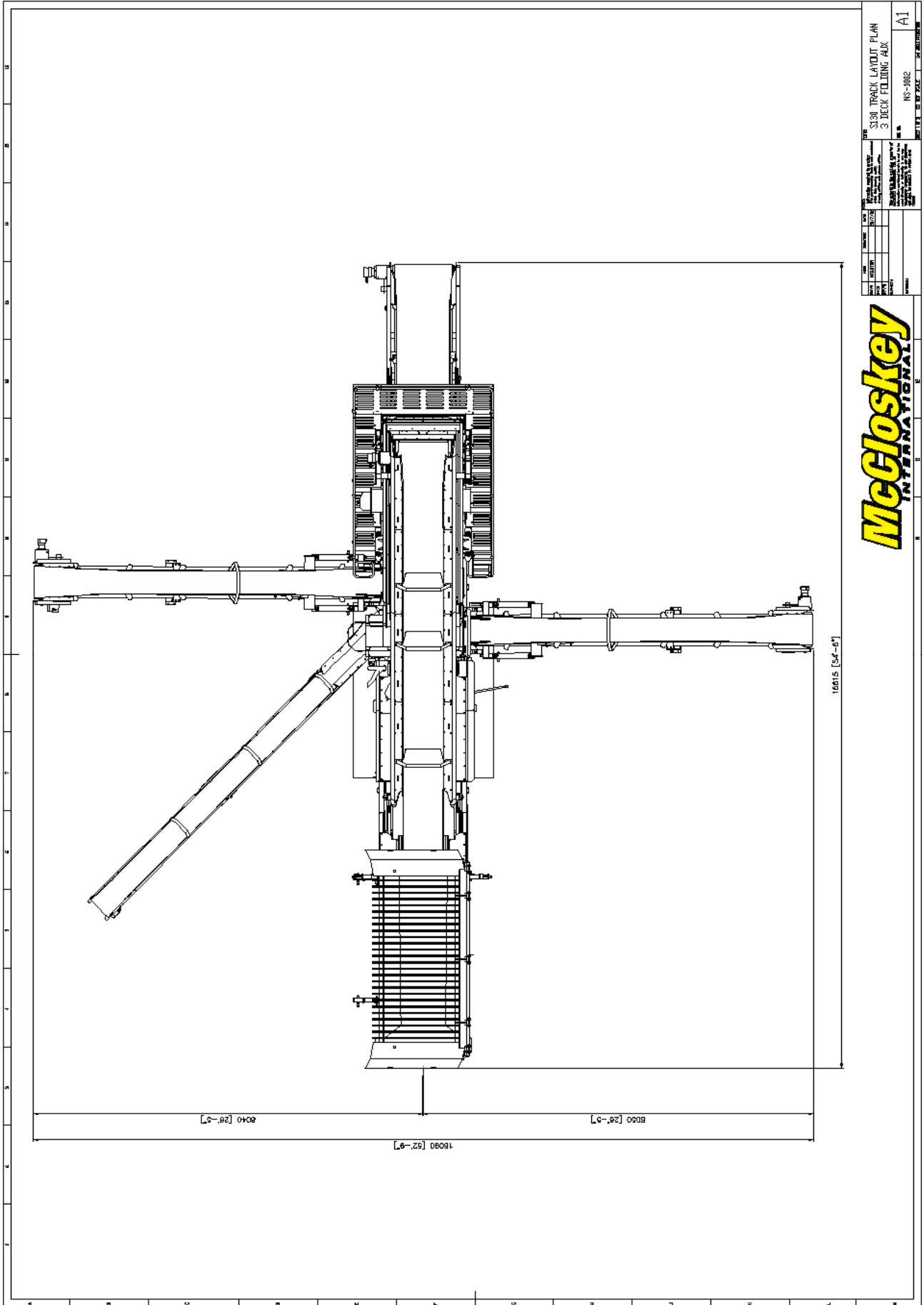
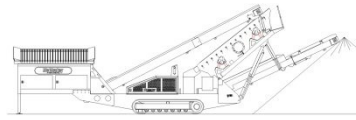
Single or double deck live head
Roll-in bogie system
Single shaft shredder
Rinsing system
Crusher chute (available with 15ft hopper only)
Radio remote control

SAFETY FEATURES

External belt alignment points
External grease points
Engine safety shutdown systems
Full safety guarding for nip points

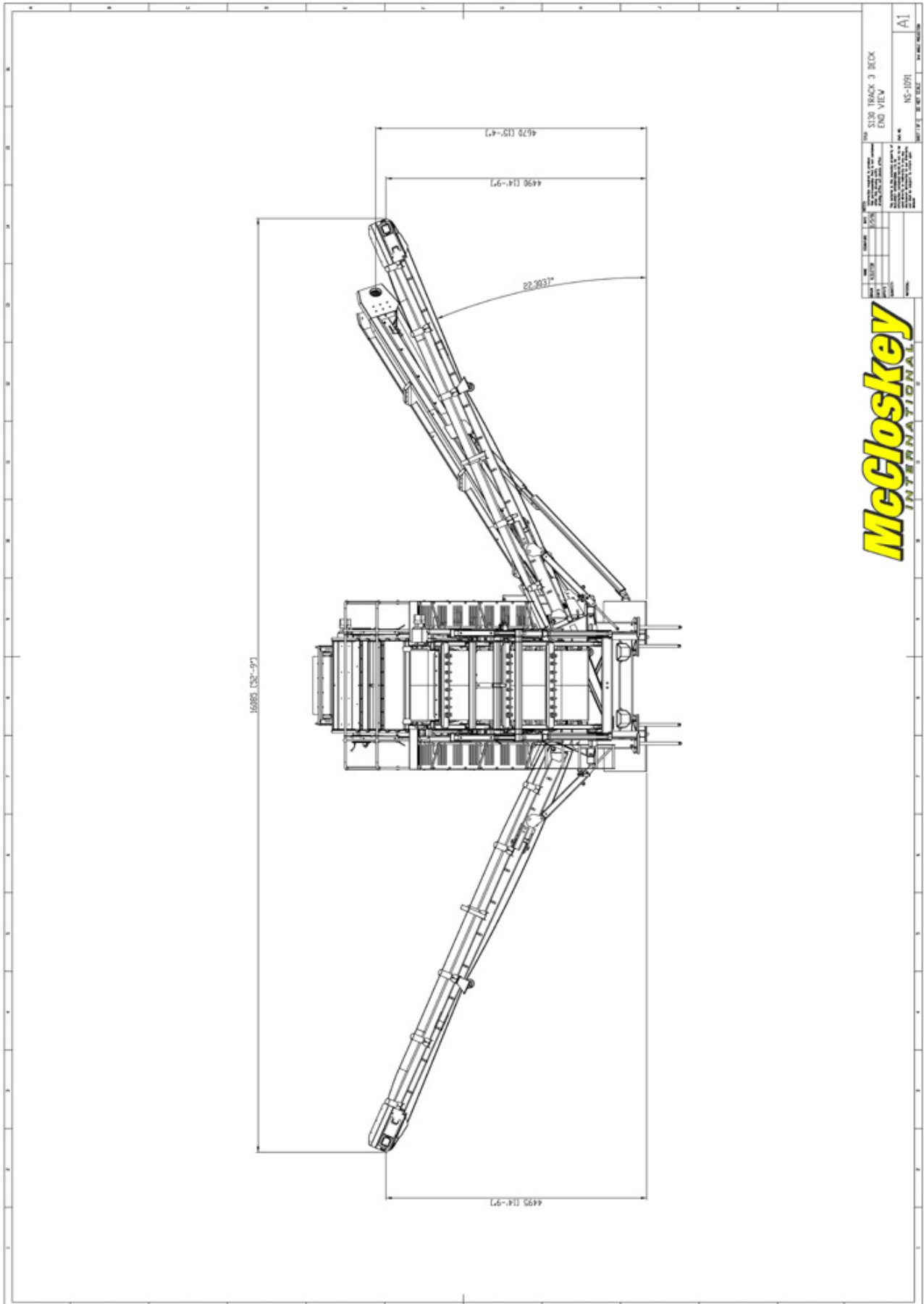
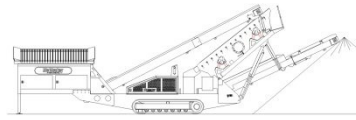






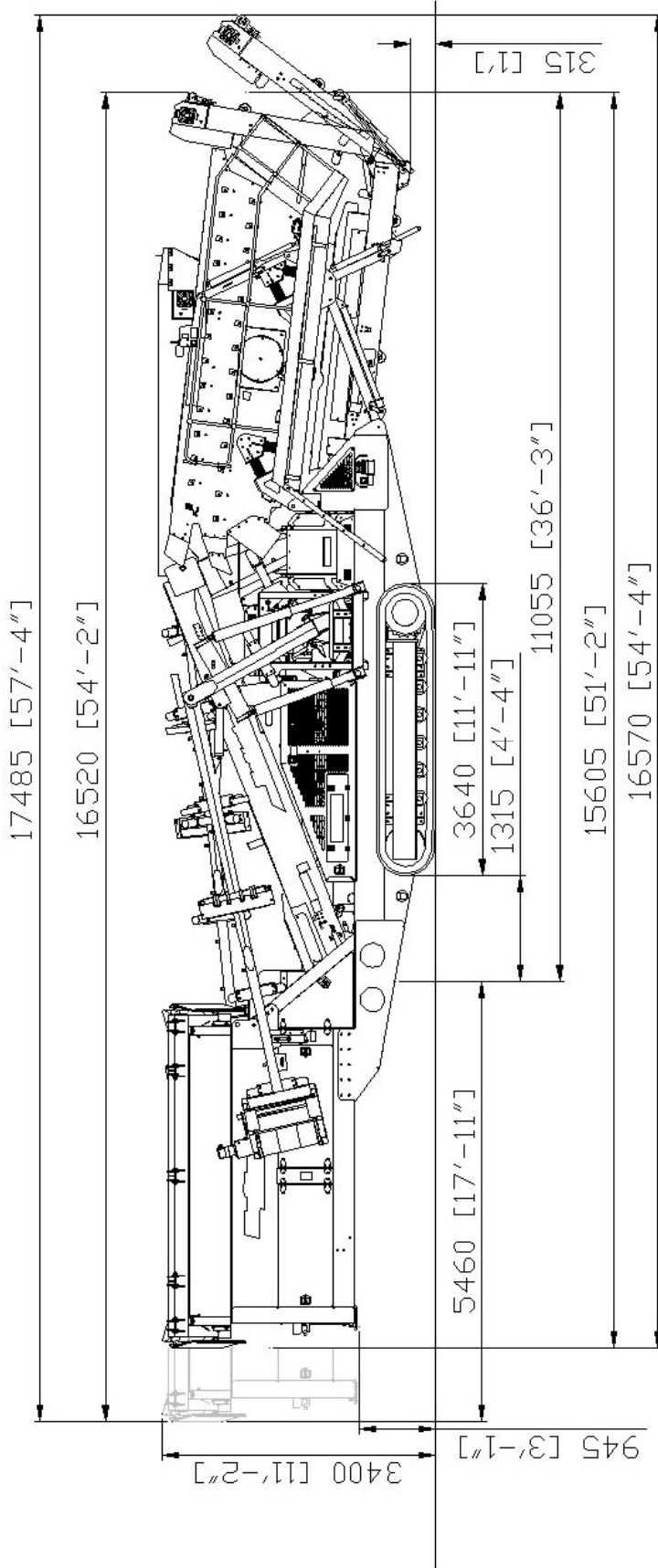
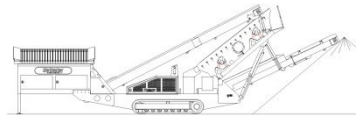
S130 TRACK LAYOUT PLAN 3 DECK FOLDING AXLE		REV. NO.	A1
DATE		REV. NO.	RS-1002
DESIGNED BY	DATE	REV. NO.	
CHECKED BY	DATE	REV. NO.	
APPROVED BY	DATE	REV. NO.	
PROJECT		REV. NO.	
DRAWN BY		REV. NO.	
SCALE		REV. NO.	
SHEET NO.		REV. NO.	
TOTAL SHEETS		REV. NO.	

McCloskey
INTERNATIONAL

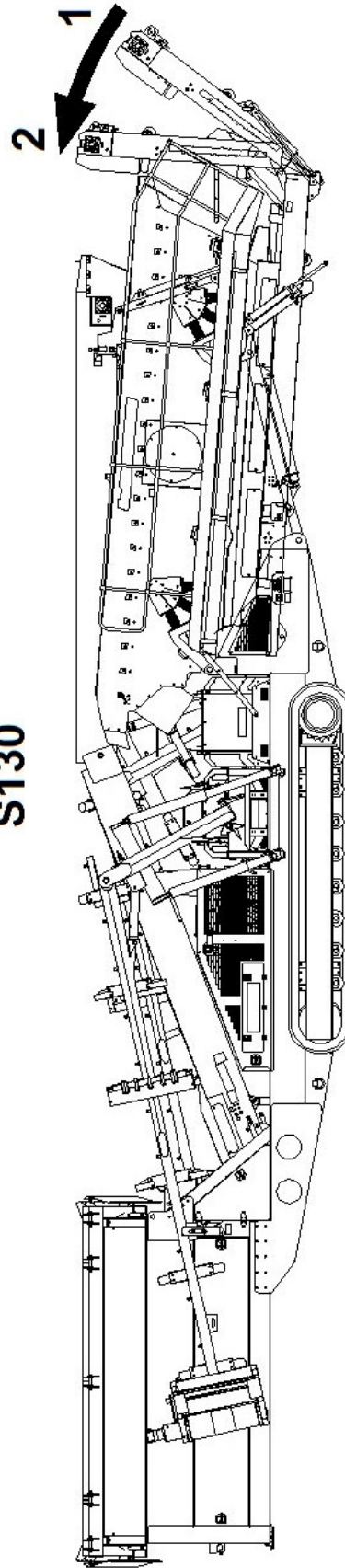


S130 TRACK 3 BACK END VIEW		REV. NO.	A1
DATE	ISSUE	NO.	1001
<small> THIS DRAWING IS THE PROPERTY OF MCCLOSKEY INTERNATIONAL. IT IS TO BE USED ONLY FOR THE PROJECT AND SITE SPECIFICALLY IDENTIFIED HEREON. IT IS NOT TO BE REPRODUCED, COPIED, OR TRANSMITTED IN ANY FORM OR BY ANY MEANS, ELECTRONIC OR MECHANICAL, INCLUDING PHOTOCOPYING, RECORDING, OR BY ANY INFORMATION STORAGE AND RETRIEVAL SYSTEM, WITHOUT THE WRITTEN PERMISSION OF MCCLOSKEY INTERNATIONAL. </small>			

McCloskey
INTERNATIONAL



S130



POSITION 1 PREVENTS DAMAGE WHEN RAISING THE SCREENBOX

POSITION 2 IS THE MINIMUM LENGTH MACHINE CAN BE FOLDED TO