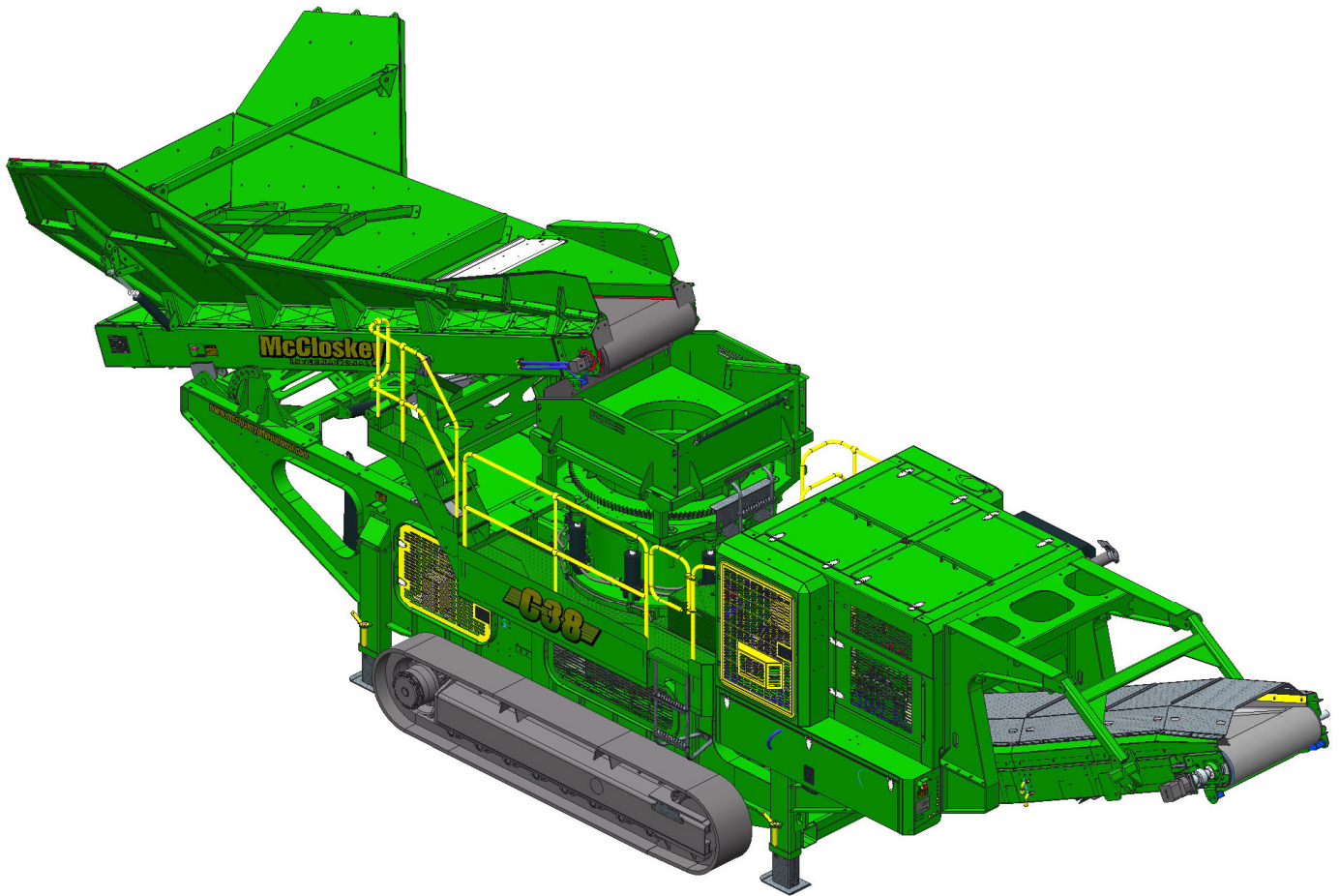




# ***SPECIFICATIONS***



# ***McCloskey*** ***C38***



## DESCRIPTION

Heavy duty track mounted Crusher with following features:

- Telsmith 38SBS Cone c/w Anti spin system.
- 350Hp C9 Cat engine.
- Track or Track c/w Wheel bogie.
- Integrated hopper with folding rear door.
- I-beam plate fabricated chassis construction.
- Large gap between crusher discharge and main conveyor feedboot
- Open chassis design for ease of maintenance
- Fast setup time

## DIMENSIONS AND WEIGHTS

|                               |                        |
|-------------------------------|------------------------|
| Length - transport all models | 14.90m (48' - 10")     |
| Width - transport all models  | 2.5m (8' - 2.4")       |
| Height - transport track      | 3.4m (11' - 2")        |
| Weight - track                | 36,500 Kgs (80468 lbs) |

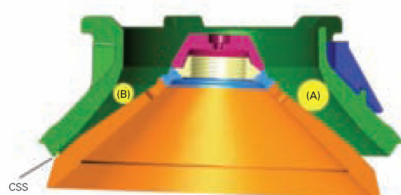
## CAPACITIES

|                         |                      |
|-------------------------|----------------------|
| Diesel tank capacity    | 635 L (168 US gal)   |
| Hydraulic tank capacity | 1200 L (317 US Gals) |

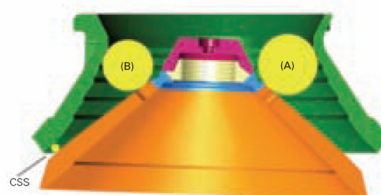
## CRUSHING CHAMBER

|                                |                                 |
|--------------------------------|---------------------------------|
| Feed opening                   | 914mm (36")                     |
| Crusher speed                  | 672 rpm                         |
| Crusher Drive                  | Hydraulic – Direct drive        |
| Min. opening                   | 10mm (3/8") (Fine liner)        |
| Max. opening                   | 146mm (5 3/4") (Coarse Liner)   |
| Cone weight                    | 13,789kg (30,400 lbs)           |
| Closed side setting adjustment | Hydraulic                       |
| Motor                          | Kawasaki axial piston 530cc/rev |
| Flow rate                      | 440 Lpm (116.2 US gpm)          |
| Level sensor                   | Ultrasonic                      |

### SBS CRUSHING CHAMBER



Typical "F" Arrangement



Typical "C" Arrangement

| Model  | Bowl        | Recommended Minimum Closed Side Setting (CSS) |       | Feed Opening at Minimum Closed Side Setting |        |            |        |
|--------|-------------|---|-------|---|--------|------------|--------|
|        |             |   |       | Open (A)                                    |        | Closed (B) |        |
| 38 SBS | C- X-Coarse | 1"  | 25 mm | 6-7/8"                                      | 175 mm | 5-3/4"     | 146 mm |
|        | C- Coarse   | 5/8"  | 16 mm | 5-1/4"                                      | 133 mm | 3-7/8"     | 98 mm  |
|        | C- Medium   | 5/8"  | 16 mm | 4-3/4"                                      | 121 mm | 3-3/8"     | 86 mm  |
|        | F- Coarse   | 5/8"  | 16 mm | 4-1/4"                                      | 108 mm | 2-7/8"     | 73 mm  |
|        | F- Medium   | 1/2"  | 13 mm | 3-3/4"                                      | 95 mm  | 2-1/4"     | 57 mm  |
|        | F- Fine     | 3/8"  | 10 mm | 3-1/4"                                      | 83 mm  | 1-3/4"     | 44 mm  |



### FEEDER

|                      |                        |
|----------------------|------------------------|
| Feeder opening width | 800mm (31.5")          |
| Feeder drum crs.     | 6000mm (19' 8.2")      |
| Drive                | Hydraulic              |
| Feeder belt width    | 1050mm (42")           |
| Motor                | Danfoss OMSS 125       |
| Gearbox              | Bonfig 809 W2 23.6:1   |
| Flow rate            | 87.4 Lpm (23.1 US gpm) |
| Adjustable speed     | Yes                    |
| Maximum speed        | 29 rpm                 |

### HOPPER

|          |                                       |
|----------|---------------------------------------|
| Length   | 3780mm (12' - 4.9")                   |
| Width    | 2200mm (7' - 2")                      |
| Volume   | 5m <sup>3</sup> (6.5yd <sup>3</sup> ) |
| Material | 6mm sides + 10mm hardox liners        |

### MAIN CONVEYOR

|                  |                        |
|------------------|------------------------|
| Stockpile height | 3230mm (10' - 7")      |
| Belt width       | 1050mm (42")           |
| Belt spec        | Plain 500/3 8+2        |
| Drive drum dia.  | 350mm (13.7")          |
| Tail drum dia.   | 270mm (10.6")          |
| Motor            | OMV630                 |
| Flow rate        | 68.4 Lpm (18.1 US gpm) |
| Maximum speed    | 108.5 rpm              |
| Angle adjustable | YES                    |
| Quick release    | YES                    |

### POWERUNIT AND HYDRAULICS

|                         |                        |
|-------------------------|------------------------|
| Engine                  | CAT C9                 |
| Engine power            | 261 kW (350 HP)        |
| Engine speed            | 1900 rpm               |
| Flywheel Pump 1         | Kawasaki K3V140DT      |
| LH PTO Pump 2           | Turolla 33/23/10       |
| RH PTO Pump 3           | David Brown 5046       |
| Total system flow       | 643 Lpm (161.9 US Gpm) |
| Hydraulic tank capacity | 1200 L (317 US Gals)   |
| Hydraulic tank ratio    | 1.86 : 1               |
| Hydraulic Oil cooler    | YES                    |



## **ELECTRICS**

|                       |  |
|-----------------------|--|
| Emergency stops       | 4 off, 2 feeder, 2 powerunit   |
| Chassis cabling       | Armored cable  |
| Start Siren           | YES - 10 sec delay   |
| Control panel         | Tedd Engineering / IFM   |
| Engine shutdowns:     | Low oil pressure<br>High water temp<br>Air filter blockage<br>Fuel contamination<br>Low hydraulic tank level |
| Radio control tracks  | optional   |
| Pendant track control | YES - plugged in control cabinet   |

## **TRACKS**

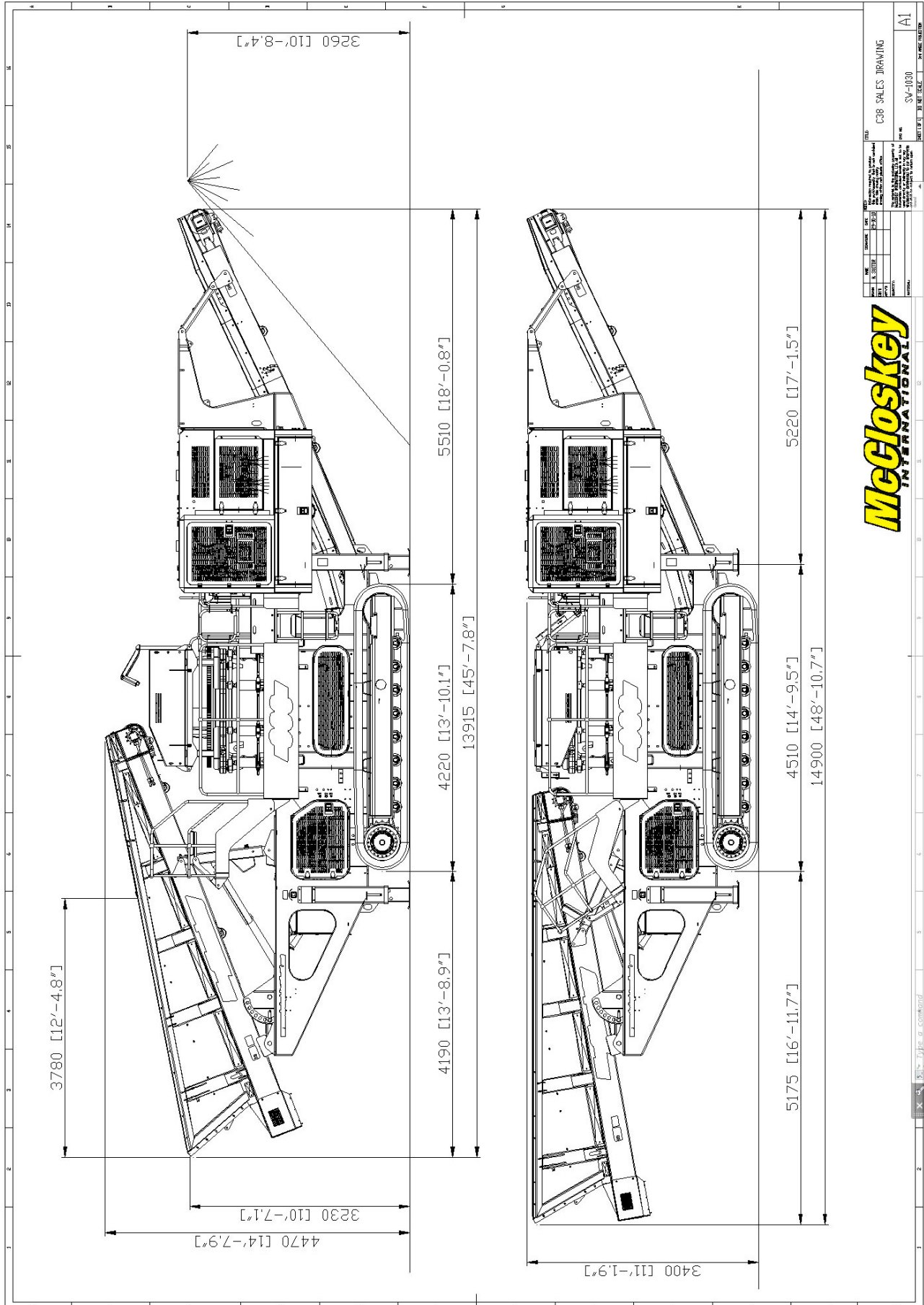
|                       |                            |
|-----------------------|----------------------------|
| Width                 | 400mm (12.7")              |
| Length                | 3400mm (11' - 2") crs      |
| Height                | 817mm (32")                |
| Gearbox               | O&K F55                    |
| Ratio                 | 148:1                      |
| Motor                 | Integrated 90cc/rev        |
| Speed max             | 1.50 Kph (0.93 Mph)        |
| Flow rate             | 138 Lpm (36.45 US gpm)     |
| Dual speed            | Variable high speed system |
| Attachment to chassis | Bolt On for quick change   |

## **OPTIONS**

- Roll-in bogie system
- Main conveyor variable speed control
- Recirculation system
- Hopper Extensions
- Water Pump and dust suppression system
- Coarse, Medium and Fine liners
- Work lights
- Fueling Pump

## **SAFETY FEATURES**

- External belt alignment points
- External grease points
- Engine safety shutdown systems
- Full safety guarding for nip points
- Hydraulic oil temp sensor
- Fuel level sensor
- Return filter sensor



| REVISIONS |  | DATE |  | BY |  | CHECKED |  | APP'D |  |
|-----------|--|------|--|----|--|---------|--|-------|--|
|           |  |      |  |    |  |         |  |       |  |

|              |                   |
|--------------|-------------------|
| TITLE        | C38 SALES DRAWING |
| DATE         |                   |
| BY           |                   |
| CHECKED      |                   |
| APP'D        |                   |
| DRAWN        |                   |
| SCALE        |                   |
| SHEET NO.    | SV-003            |
| TOTAL SHEETS |                   |
| DRAWN BY     |                   |
| CHECKED BY   |                   |
| APP'D BY     |                   |

**McCloskey**  
INTERNATIONAL