

SPECIFICATIONS

36X90-OH V-BIN



**DESCRIPTION**

Heavy duty mobile stockpiling conveyor with following features:

- 900mm (36") wide heavy duty 90' long conveyor.
- 67kw (92hp) Cat 4.4 Engine.
- Road Towable
- Direct Feed Hopper
- Counterweighted design keeps axle out of stockpile
- Hydraulic folding for easy transport.
- Fast on site setup time – 5 minutes.

DIMENSIONS AND WEIGHTS

Length – working	26.8m (88')
Height – working	11.05m (36'-3")
Length – transport	15.31m (50'-3")
Width – transport	3.37m (11')
Height – transport	4.13m (13'-6")

CONVEYOR

Belt width	900mm (36")
Belt length	26.8m (88') drum centers
Belt spec	Heavy Duty Plain 400/3 5+1.5
Belt maximum speed	167m/min (548 ft/min)
Stockpile height	11.05m (36'-3")
Stockpile capacity	2497 cu.m (3266)cu.yds
Production	750 TPH Standard
Hopper Capacity	5.73 cu. Meter (7.5 cu. Yards)

CAPACITIES

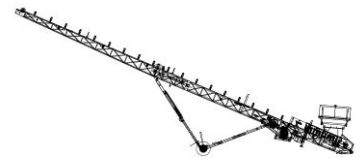
Diesel tank capacity	189 L (50 US gal)
Hydraulic tank capacity	113 L (30 US gal)

POWERUNIT AND HYDRAULICS

Engine	Cat 4.4T
Engine power	68kw (92hp)
Engine speed	2200 rpm
Clutch	Twin Disc SP211
Total system flow	18 lpm (5 US gpm)
Reducer	Dodge TA5-15:1
Reducer Drive	Sheaves and Powerband
Drive Type	Wrap

PULLEYS

Drive Pulley	18 x 38 Crown Faced – 3/8 Lagging
Snub Pulley	14 x 38 Crown Faced Wing
Head Pulley	14 x 38 Crown Faced Bare
Tail Pulley	14 x 38 Crown Faced Wing
Shafts	3in C1045 Shafting
Bearings	3in Pillow Block

**IDLERS**

Under Hopper	35 Degree Impact – Cema C
Conveyor	35 Degree – Cema B
Return Idlers	Self Cleaning Rubber Disc – Cema C

SAFETY FEATURES

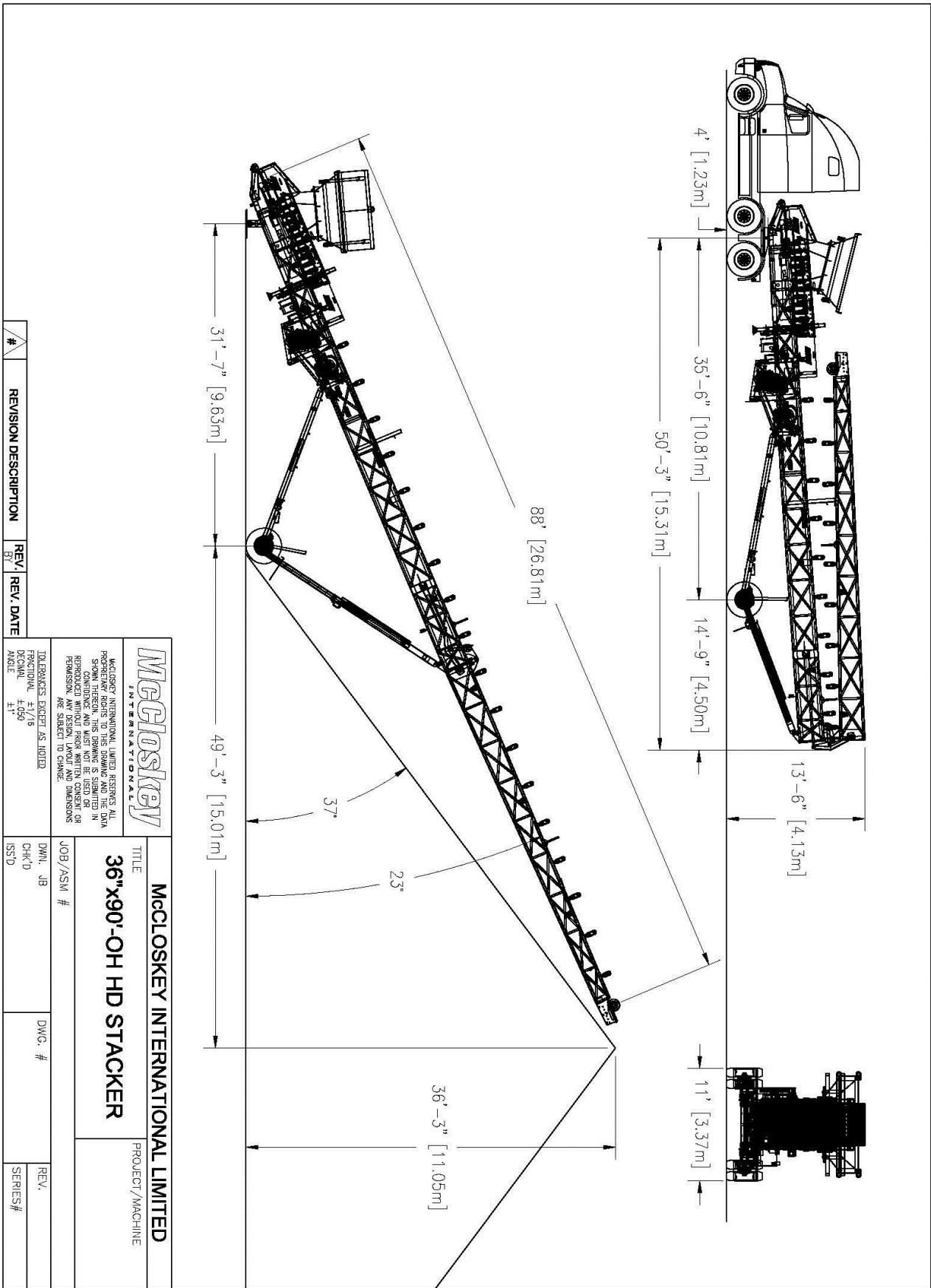
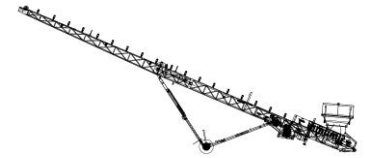
External belt alignment points.
External grease points.
Engine safety shutdown systems.
Full safety guarding for nip points.
Safety Pullcord

STANDARD FEATURES

Ground Level Greasing
Hydraulic Top Fold
Radial Axle
Axle Extensions
Hydraulic Landing Gear
Hydraulic Folding Hopper Wing Plates
Lights, Mudflaps, Air Brakes

OPTIONS

Chevron Belt
Hopper Wear Plate Liner
Anti-Segregation Paddle Wheel
Belt Scale
Martin Scraper
Hydraulic Axle Jacks
Hydraulic Axle Extensions
Hydraulic Wheel Drive
Electric Drive



#	REVISION DESCRIPTION	REV.	REV. DATE

		TOLERANCES EXCEPT AS NOTED: FINISHES ±.01/16 DIMENSIONS ±.1"	
McCloskey INTERNATIONAL LIMITED RESERVES ALL PROPRIETARY RIGHTS TO THIS DRAWING AND THE DATA SHOWN THEREON. THIS DRAWING IS SUBMITTED IN CONFIDENCE AND MUST NOT BE USED OR REPRODUCED IN ANY MANNER WITHOUT THE WRITTEN PERMISSION. ANY DESIGN, LAYOUT AND DIMENSIONS ARE SUBJECT TO CHANGE.			
McCloskey INTERNATIONAL LIMITED		PROJECT/MACHINE	
36"x90'-OH HD STACKER		JOB/ASM #	
DWG. #		REV.	
CHK'D ISS'D		SERIES#	

