



***Specialist Manufacturers of Quarry, Mining &
Recycling Equipment***

Irish Manufacturing Services Limited
34 Dunroe Road, Clogher, Co. Tyrone, N. Ireland
BT76 0DZ
Tel. +44 (0)28 8554 9656 E-mail info@ims-ltd.ie
website; www.ims-ltd.ie



IMS was formed in 2010 by a team of individuals with a wealth of experience in designing and manufacturing equipment for the mining, quarrying, recycling and materials handling industries.

The company is based in Northern Ireland, in a region renowned worldwide for its expertise in producing high quality, cost effective equipment for the world market.

IMS operate from a purpose build factory to ensure efficient and quality manufacturing processes and to provide a reliable service to their ever increasing customer base.

IMS have developed design and manufacturing partnerships with a number of large international supply companies and also offer bespoke solutions where standard production line equipment does not fit the end customer requirements. This twin strategy approach of working with partners with specialist skills at the same time as providing custom built equipment when required ensures a win-win solution for the end customer.

Contact Details

Irish Manufacturing Services Limited

34 Dunroe Road

Clogher

Co.Tyrone

N.Ireland

BT760DZ

Telephone No. +44 28 85549656

E-mail: info@ims-ltd.ie

Website: www.ims-ltd.ie

This brochure is available on the downloads section of our website



Contents

Page(s)

SCREENING

MS104T Track Scalper	4-8
MS842W Wheeled Screen	9-12
MS841W Wheeled Screen	13-17
RD100 Box Screen	18-21

MIXING

PM1050-16TB Track Pugmill	21-25
MSO-40 Mobile Silo	28-30
BP1200-9TB Track Blending Plant	31-36
BP914-2BS Static Blending Plant	37-40

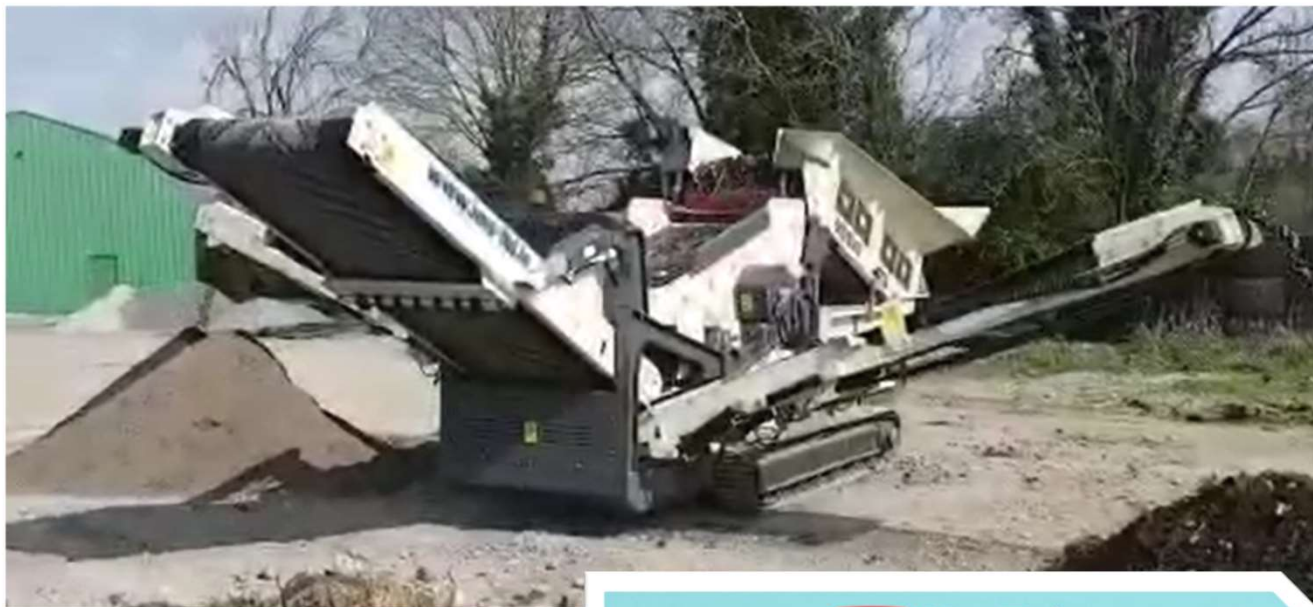
STACKING

MC1050-20TF 65ft Track Feeder	41-46
MC1050-14TF 50ft Track Feeder	47-51
MH750-11WF 35ft Wheeled Feeder	51-55
MC1050-20T 65ft Track Stacker	56-60
MC1050-24T 80ft Track Stacker	61-65
MC1050-30T 100ft Track Stacker	66-69
MC1050-20WF 65ft Radial Wheel Conveyor	70-75
Wheel Conveyor Range	76-77



MS104T

Track Scalper

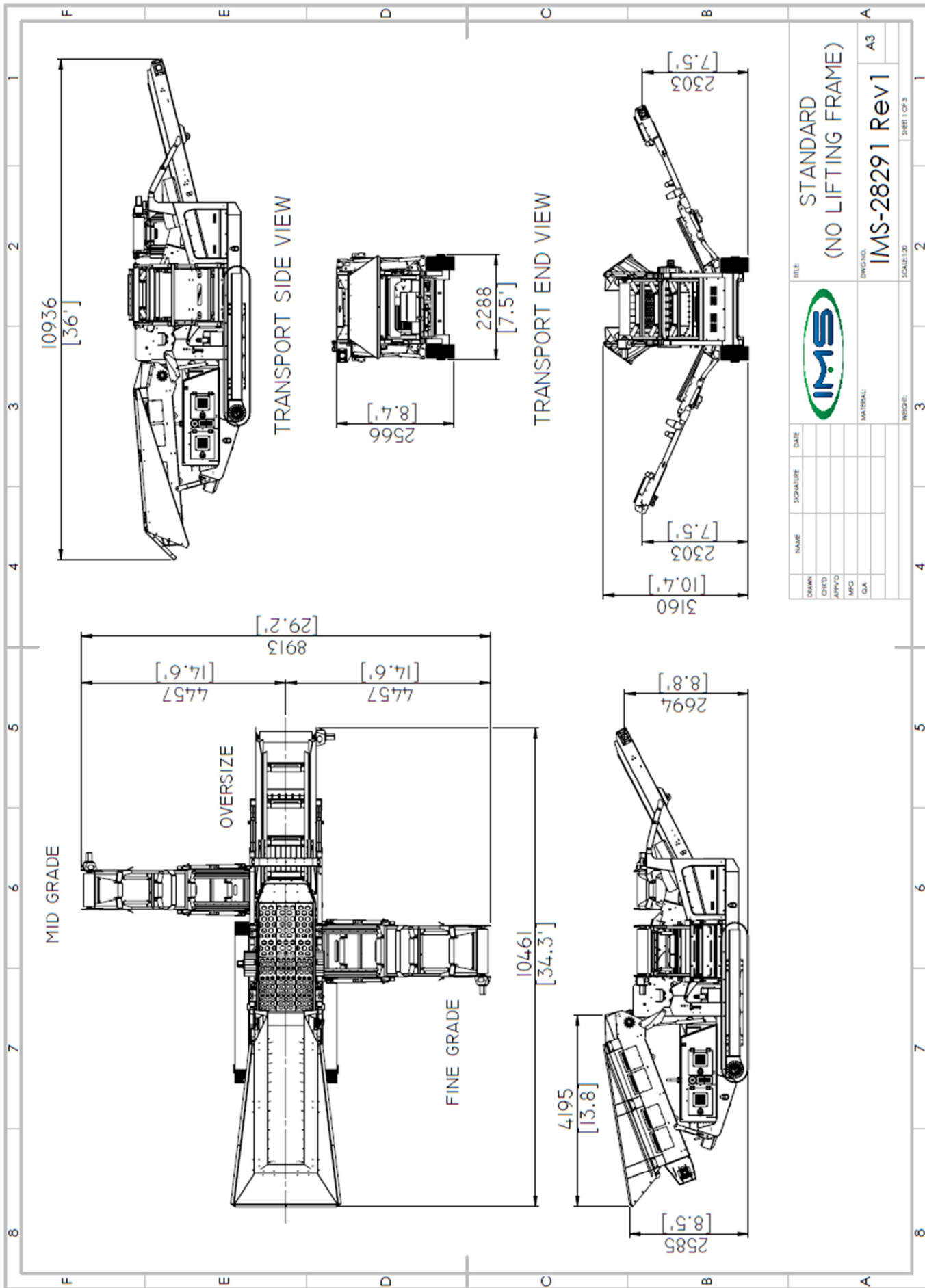


 YouTube

SEARCH

IMS MS104T



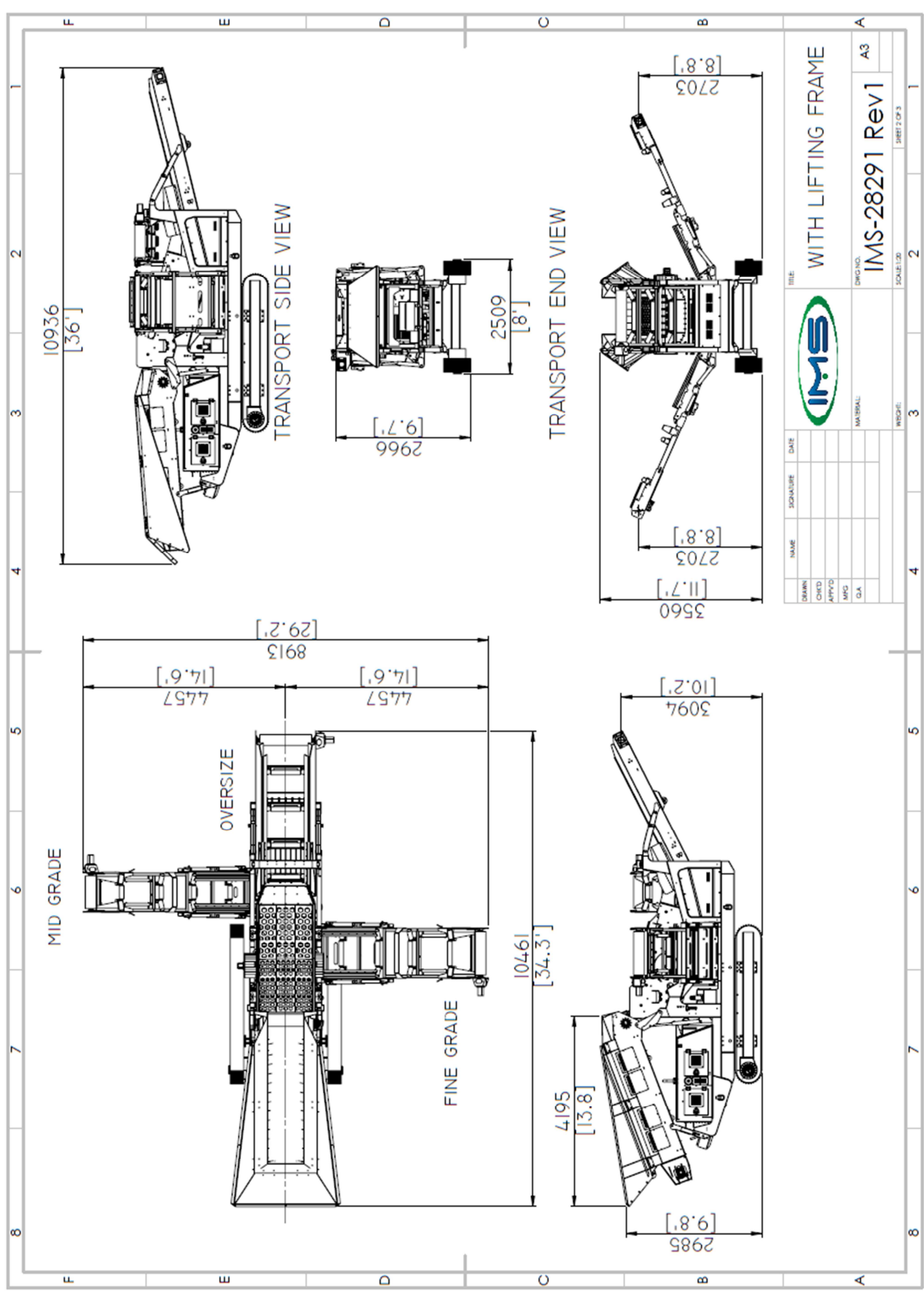


DRWN:	NAME:	SIGNATURE:	DATE:
CHKD:			
APP'D:			
MPD:			
QA:			

TITLE:	STANDARD
	(NO LIFTING FRAME)
DWG NO.:	IMS-28291 Rev1
SHEET 1 OF 3	A3
SCALE:	1:20
WORK:	3
	2



Lift Frame Option



DRWN	SIGNATURE	DATE	TITLE
CHKD			WITH LIFTING FRAME
APPD			
MFG			DWG NO.
QA			IMS-28291 Rev1
			MATERIAL:
			SCALE: 1:1
			SHEET 2 OF 3



MS104T Three Way Mobile Scalping Screen, the flexible screening machine, aimed at small to medium sized operators who require a high performing, heavy duty, versatile machine that remains easy to transport.

Features and Benefits.

6 Yd (4.6M) Hopper with Variable Speed 40 inch (1000mm) Belt Feeder

10' x 4' 2" (3050mm x 1250mm) Double Deck screen with capacity up to 300 tph (depending on material type, feed size and screen media selection)

Caterpillar C2.2 74HP (55kW) T4F/Stage V Diesel Engine

Sauer Danfoss Hydraulic Motors

Hydraulic folding wing conveyors

Containerised for transport





Specification.

Total Weight:	31900lbs (14500kgs)
Working Width:	29'6" (9m)
Working Height	10' 3" (3.12m)
Screen Size:	10' x 4' 4" (3050mm x 1250mm)
Diesel Power:	75HP (55KW) Tier 4F (USA) /Tier 5 (Europe)
Transport Width:	8' 5" (2.56m)
Transport Height:	7' 6" (2.3m)
Transport Length:	34' 5" (10.5m)

OPTIONS.

Choice of Meshes
Punch Plate
Raise Frame



Due to Irish Manufacturing Services Limited's policy of continuing product improvements, specifications are subject to change without notice or obligation. No representation is made that the products depicted herein comply with any laws, codes, rules, regulations or standards. Compliance is the responsibility of the user. Additional safety equipment may be required by the particular location and application of product.

Irish Manufacturing Services Limited
34a Dunroe Road, Clogher, Co. Tyrone, N. Ireland BT76 0DZ
Tel. +44 (0)28 8554 9656 E-mail info@ims-ltd.ie website; www.ims-ltd.ie



MS842W Mobile Screen



 YouTube

SEARCH

IMS MS842W





8' x4' (2.4 m x 1.2 m) 4-Bearing Screen

The unique end to end crowning of the 8' x4' (2.4 m x 1.2 m) MS842W screen box allows for higher production and more efficient separation than similarly sized flat screens.

On-Board Stockpiling Wing Conveyors

The on-board stockpiling conveyors allow for fast set up times by eliminating the need for off plant stacking conveyors. The self cleaning wing conveyors have a folding mechanism that provides a compact profile for transport while providing a stockpile height of 14'3" (4,3 m).

Wing Conveyor Variable Speed Drive

The top screen deck wing conveyor hydraulic system allows the user to adjust the speed of the conveyor to control rollback of material providing for a safer and more efficient operation.

On-Board Product Conveyor

The folding mechanism of the on-board product conveyor allows for fast set up. It also provides a compact profile for transport, added strength, and a stockpile height of 3.8 m (12'6").

Maintenance Platform

The maintenance platform on the MS842W extends across the rear portion of the screen and provides easy access to the screen panels for screen mesh replacement. Ladders with handrails are installed on both sides of the MS842W for access to the maintenance platform and to the remote screen bearing lubrication points.

Emergency Stop System

Every MS842W is equipped from the factory with an emergency stop system that will render the plant inoperable when activated, providing added safety for the operator.

Remote Control Tipping Grid

The optional remote control tipping grid function of the MS842W allows the operator to operate the screening plant from the seat of his loader or excavator increasing operator efficiency and plant production.



Standard Features

- Remote control heavy duty tipping grid
- Two-deck, four bearing 8' x 4' (2.4m x 1.2m) screen box
- Hydraulic folding wing conveyors
- Maintenance ladders and platform provides access to three sides of screen box
- On site towing bar
- Hydraulic Jack legs
- Remote screen box greasing
- Acoustic engine canopy
- Emergency stop system
- Hydraulic oil cooler
- Light systems either 12v or 24v depending on destination

Options

- Shredder with manganese hammers for abrasive materials and Alternative Cutting blades for peat, topsoil or mulch applications
- ABS brakes
- Washing option including top deck rinse bars and sandbox (image below)





Specifications

Operational length	15.4M (50'6")
Operational height	4.4M (14'7")
Hopper capacity	6.9 cubic yds (5,3 cubic metres)
Loading height	3.3M (10'8")
Loading width	3.8M (12'6")
Hydraulic tank capacity	362 l (96 gal)
Diesel fuel capacity	151 l (40 gal)
Engine	Liquid Cooled
Engine power (horsepower)	74 kw (100 Hp)
Screen box size	2.4m x 1.2M (8' x 4')
Screen box type	4 bearing
Towing arrangement	Fifth wheel
Brakes	Tractor air braking system t
Transport width	2.5m (8'2")
Travel height	3.9m (13'0")
Transport length	13.1M (43'0")
King Pin weight	3680 kg (8096 lbs)
Total weight	13700 kg (30203 lbs)

Due to Irish Manufacturing Services Limited's policy of continuing product improvements, Specifications are subject to change without notice or obligation. No representation is made that the products depicted herein comply with any laws, codes, rules, regulations or standards. Compliance is the responsibility of the user. Additional safety equipment may be required by the particular location and application of product.

Irish Manufacturing Services Limited

34 Dunroe Road, Clogher, Co. Tyrone, N. Ireland BT76 0DZ Tel. +44 (0)28 8554 9656

E-mail info@ims-ltd.ie

Website: www.ims-ltd.ie



MS841W Mobile Screen

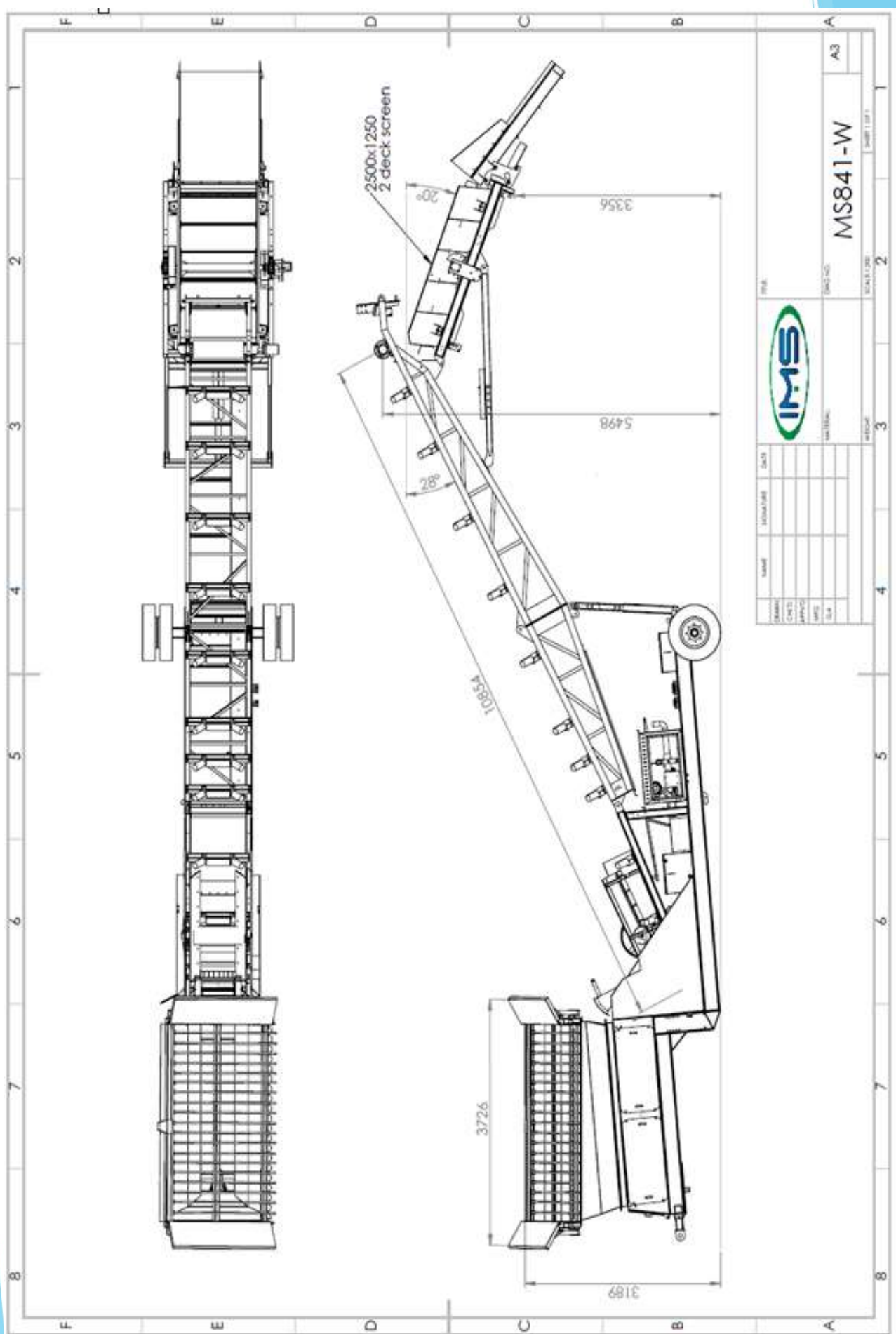


 YouTube

SEARCH

IMS MS841W







Features and Benefits

7 Yd (5.3M) Hopper with Variable Speed Belt Feeder and Remote Tipping Grid

Maximum Feed Size 6"

8' x 4' Double Deck 4 Bearing screen with end tensioned meshes

Capacity up to 250 tph (depending on material type, feed size and screen media selection)

Diesel Hydraulic Drive to latest emission standards

Alternative Electric Hydraulic Drive

Fifth Wheel Towing with transport wheels and axle

Site Towbar for localized movement with site equipment

Specification

Total Weight:	20000lbs (9100kgs)
Transport Length:	53'0" (16.15m)
Transport Width:	7'3" (2.2m)
Transport Height:	12'6" (3.8m)
Working Length:	57'0" (17.4m)
Working Width:	7'3" (2.2m)
Working Height	16' 6" (5.03m)
Screen Size:	8' x 4' (2500mm x 1250mm)
Diesel Power:	50HP (37KW) Tier 4F (USA) /Tier 5 (Europe)
Electric Power:	50HP (37KW)





Hopper and Grid

Capacity 7 cu yd. (5.3cu M)
Remote Control Tipping Grid
Grid Spacing 4" (100mm), 5" (125mm), 6" (150mm)
Single Bar Grid for easy replacement
Feed In Height 10'6" (3.2m)
Target Area 12'3" x 6'0" (3.7m x 1.8m)

Belt Feeder

30" (750mm) 2 ply plain belt
Danfoss Direct Drive Hydraulic Motor
Variable Speed Control

Main Conveyor

30" (750mm) 2 ply plain belt
Danfoss Direct Drive Hydraulic Motor
Manual

Screenbox

8' x 4' (2500mm x 1250mm) Incline Double Deck 4 bearing screen
End Tensioned Meshes
Manual Screen Tensioning
Manual Screen Angle Adjustment

Power Unit

50HP (37KW) Diesel Engine (Tier 4F (USA) / Tier 5 (EC)
Fuel Tank 35 gallon (160 litres)
Hydraulic Tank 50 gallon (220 litres)
Tandem 2PL 070 Hydraulic Pump

Axle and Wheels

Single Axle non-braked with Twin 7.50 x 8 stud Wheels





Options

- Electric Hydraulic Powerpack
- 3 Deck Screen
- Single Shaft Shredder with hammers or flails
- Braked Axle
- Light Board
- Magnet
- Rinse Bars and Rubber Lined Sandbox
- Anti Rollback Brackets
- Chevron Belt

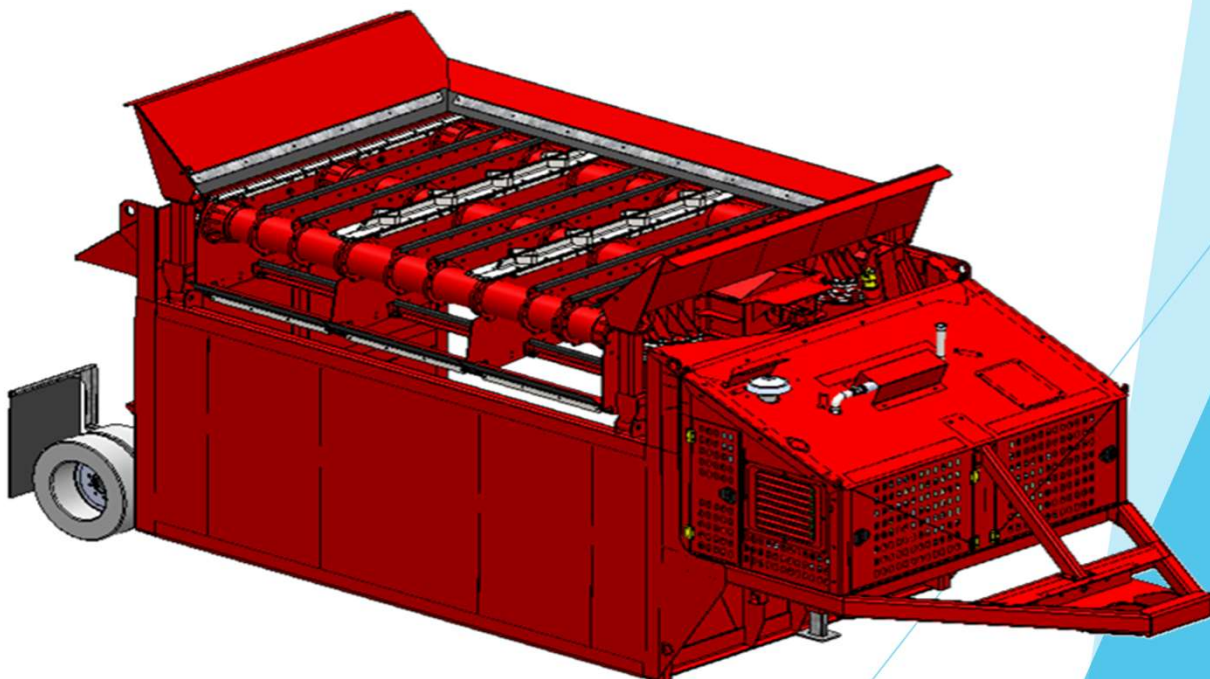
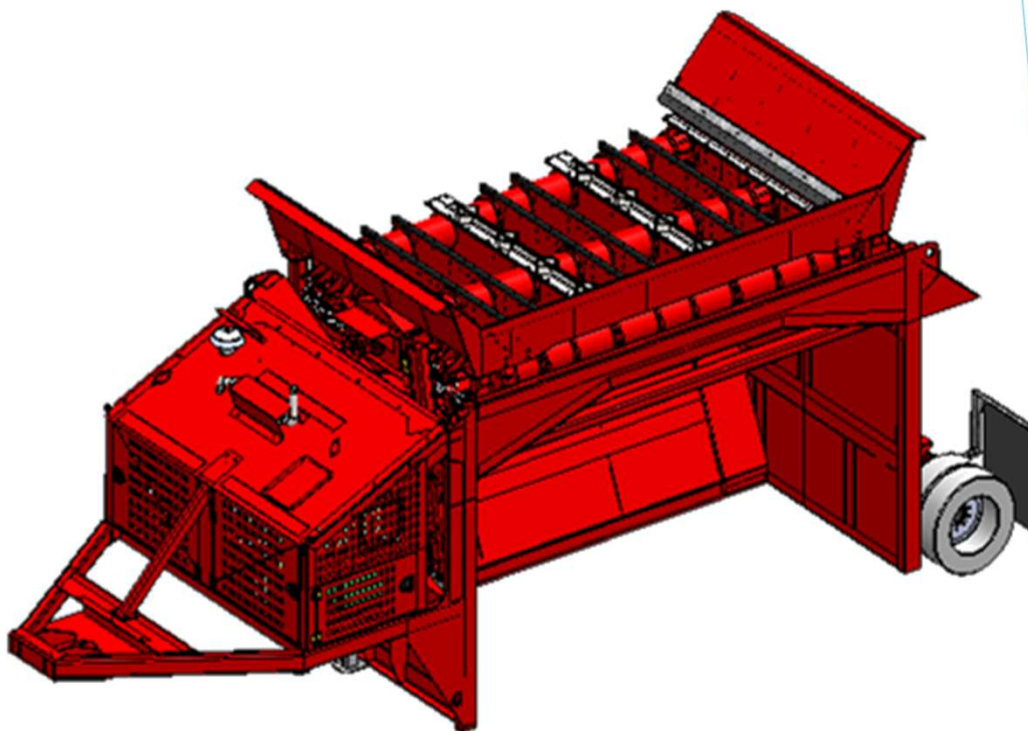


Due to Irish Manufacturing Services Limited's policy of continuing product improvements, Specifications are subject to change without notice or obligation. No representation is made that the products depicted herein comply with any laws, codes, rules, regulations or standards. Compliance is the responsibility of the user. Additional safety equipment may be required by the particular location and application of product.

Irish Manufacturing Services Limited
34a Dunroe Road, Clogher, Co. Tyrone, N. Ireland BT76 0DZ
Tel. +44 (0)28 8554 9656 E-mail info@ims-ltd.ie website; www.ims-ltd.ie

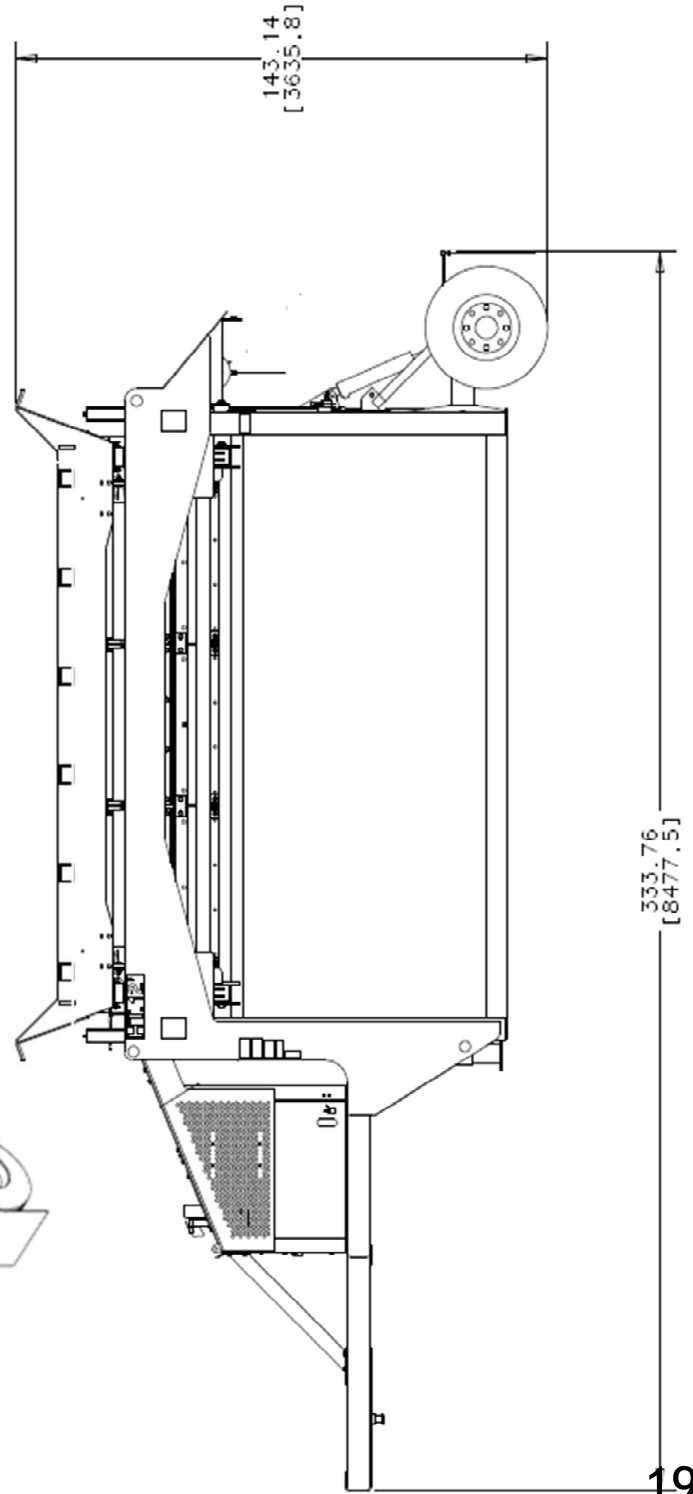
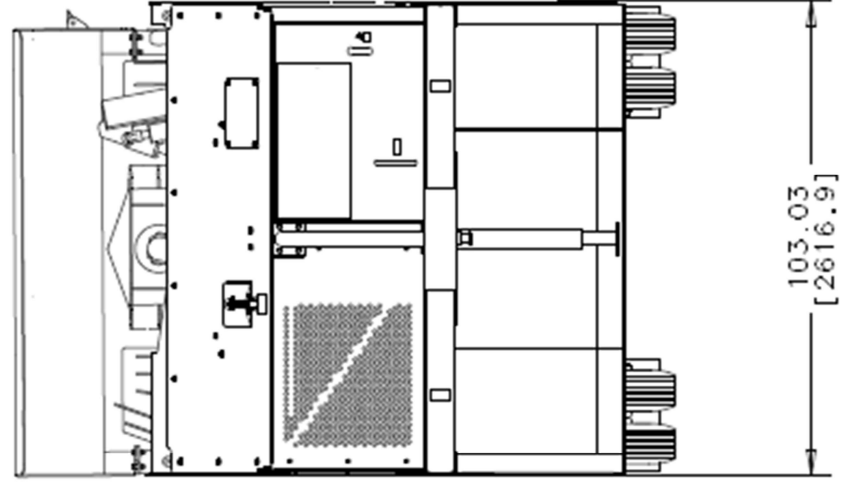
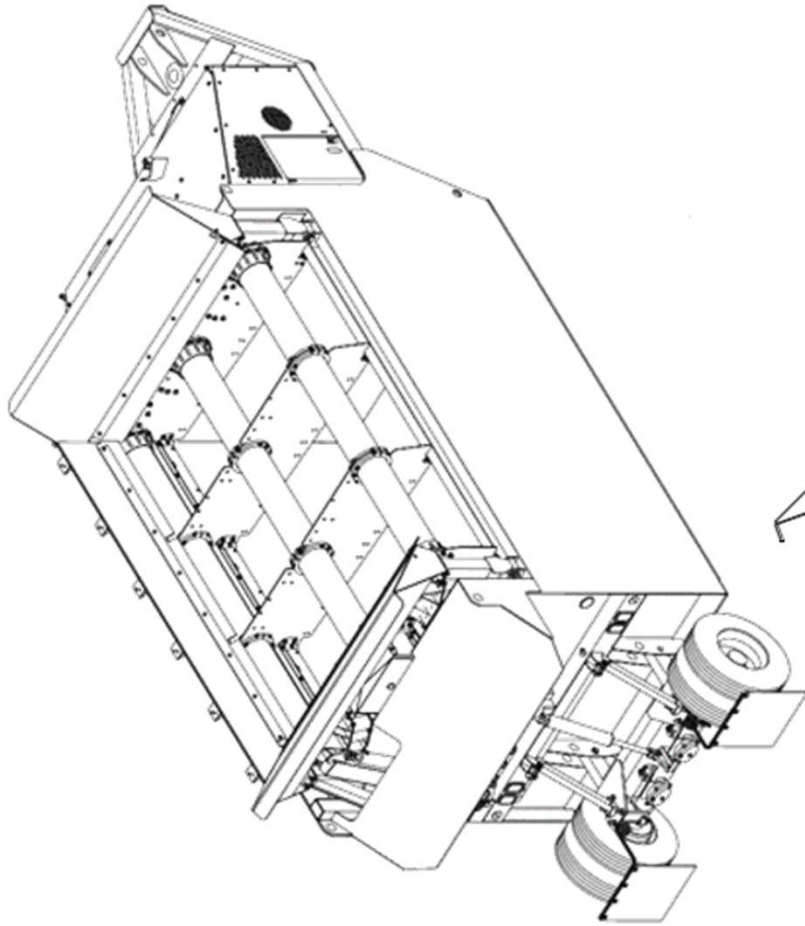


RD100 Mobile Screen





RD100





RD100 Mobile Screen provides contractors with a simple to use, compact, and highly reliable screening plant that can handle a wide variety of materials. Contractors save money by screening material on the job site, thus reducing handling and tipping costs.

Features and Benefits.

11' wide x 7' double deck shaker grid, 13'-2" width

Shaker head runs forward and in reverse rotation

Shaker head tilts up for cleaning and optimal screening

Works with 4 to 7 yard buckets, ¼" to 4" wire or punch plate

Hydraulically adjustable angle on grid with minimum loading height of 11'-3"

Caterpillar C1.7 Stage V/T4F Diesel engine with 50HP no DEF required

9" X 17.5" rims with tires, brakes and LED lights





Specification.

Total Weight: 15000lbs on axle
11500lbs on King Pin

Transport Width: 8' 6"

Transport Height: 10' 11"

Transport Length: 27' 7"



Due to Irish Manufacturing Services Limited's policy of continuing product improvements, specifications are subject to change without notice or obligation. No representation is made that the products depicted herein comply with any laws, codes, rules, regulations or standards. Compliance is the responsibility of the user. Additional safety equipment may be required by the particular location and application of product.

Irish Manufacturing Services Limited
34a Dunroe Road, Clogher, Co. Tyrone, N. Ireland BT76 0DZ
Tel. +44 (0)28 8554 9656 E-mail info@ims-ltd.ie website; www.ims-ltd.ie



PM 1050-16TB

Track Pugmill



 YouTube

SEARCH

IMS PUGMILL





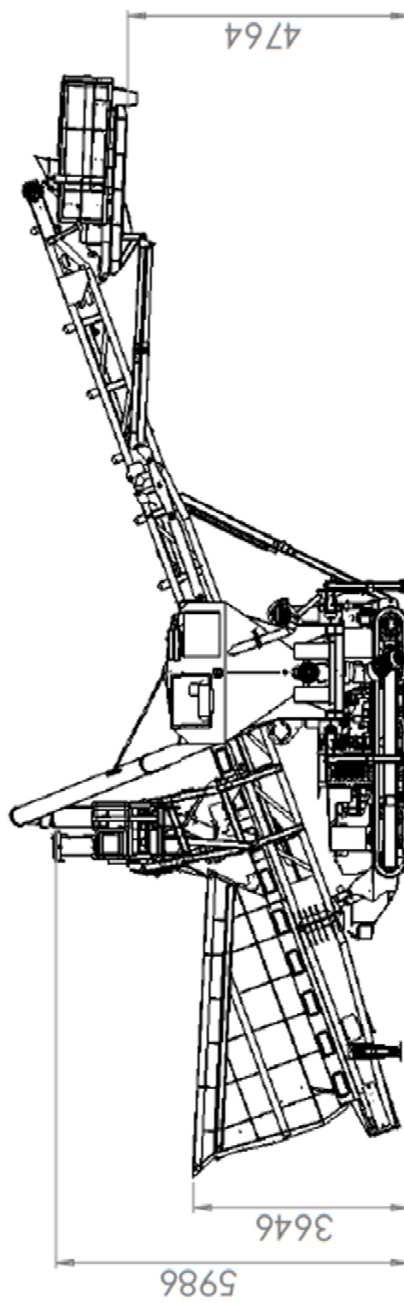
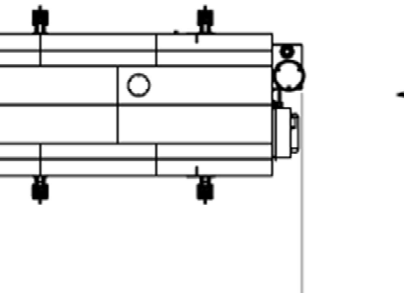
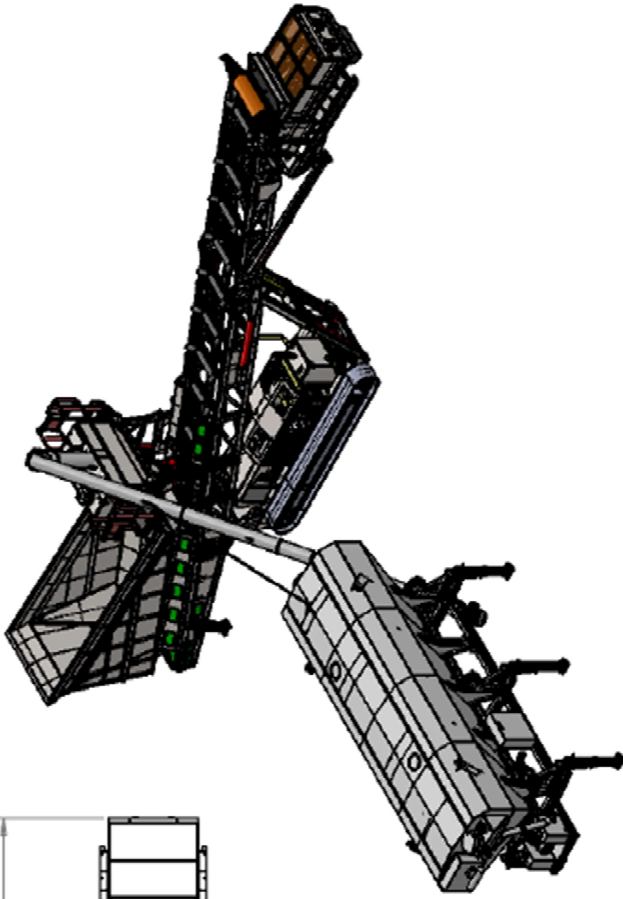
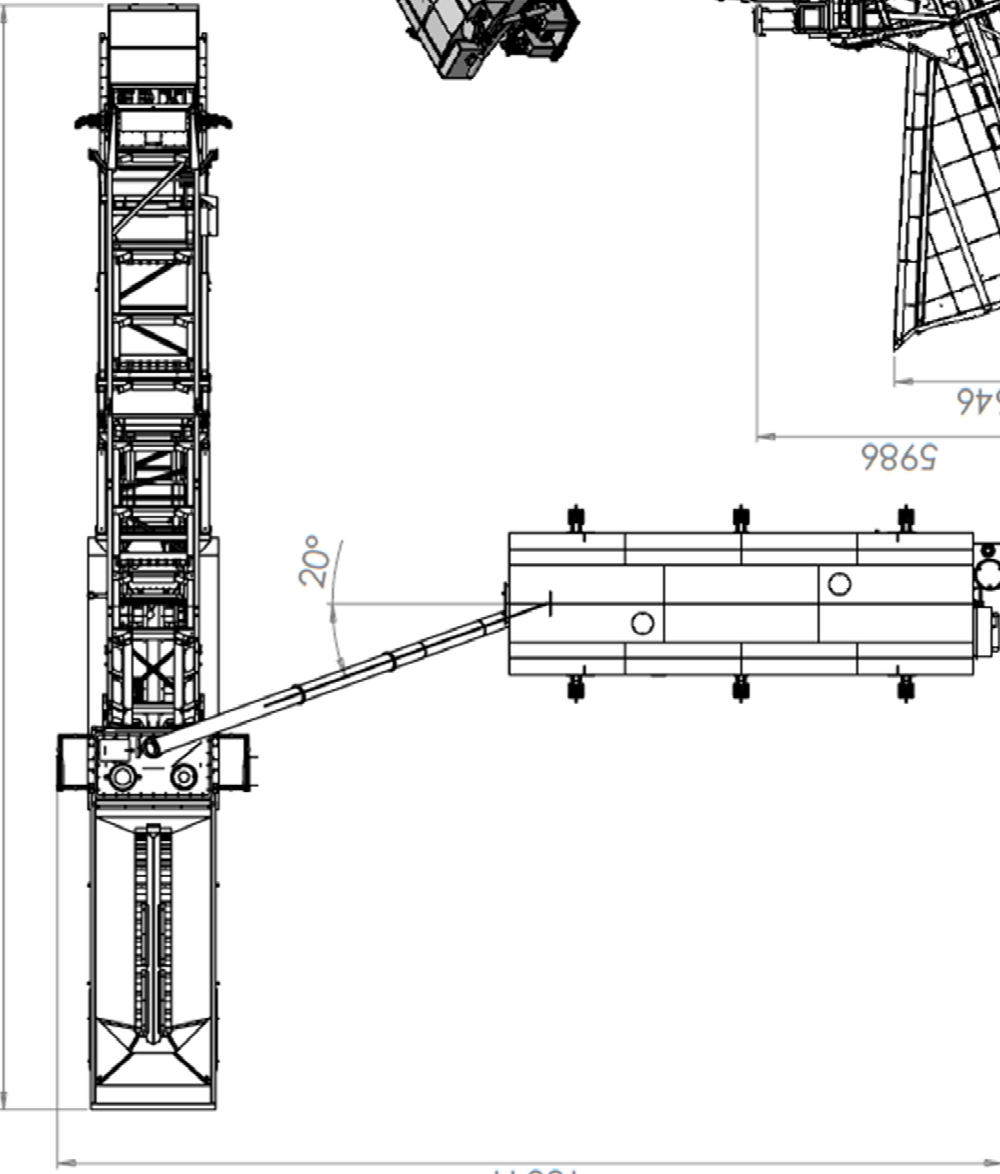
The PM1050-16TB, the ideal solution for jobs that require high production material blending and mixing with the added bonus of a stockpiling facility



18760


16041

20°



VIEW A



NAME	SIGNATURE	DATE		TITLE	GA	
DRAWN				DWG NO.		A3
CHECK				MATERIAL		
APPROV'D				REVISION		
MFG				SCALE		1 OF 1

Pugmill & Silo



Conveyor

The conveyor is constructed in 3 latticed angle sections , the tail section includes a generous 8m³ feed hopper and the head section includes the conveyor drive, consisting of twin Sauer-Danfoss hydraulic motors coupled to a rubber lagged drive pulley

Diesel-Hydraulic Power Unit

The conveyor is powered by a 75kw liquid cooled Diesel Engine coupled to a hydraulic pump giving sufficient oil flow to drive the conveyor at maximum output, to provide the drive for the PugHead, to operate the crawler tracks, and to operate the various hydraulic cylinders



Undercarriage

The undercarriage consists of the hydraulically operated crawler tracks together with an adjustable support trestle arrangement, which allows variation in both feed and discharge heights

Pugmill

The Pugmill is designed with Twin Mixer shafts for anti-surfing and high production material blending. Each shaft is fitted with replaceable 500 grade Paddle tips rotatable through 180° to equalize wear. The Pugmill drive consists of a hydraulic piston motor directly coupled to a Chain Final Drive to give fixed output speed of 470rpm.

Hydraulic Folding Mechanism

The folding mechanism of the conveyor head and tail sections allow for quick site set up and provides a flexible approach to transport of the unit. The hydraulic folding is designed so that the hydraulic cylinder piston rods are fully protected when the machine is operational

Emergency Stop System

Every PM1050-16TB Track Pugmill unit is equipped from the factory with an emergency stop system that will render the plant inoperable when activated, providing added safety for the operator.



Standard Features

- Crawler Track Movement with Dog Lead Control
- 75 kw Diesel-Hydraulic Drive
- 1050mm (42") wide 3 ply belt
- Hydraulic Folding on Pugmill
- Hydraulic Folding of Head Section
- Hydraulic Raise and Lower
- Hydraulic Adjustment of Tail Section for transport on Low Loader
- Water Header Tank
- Additive Chute
- Wash facility for Pugmill Mixer

Volume Range: 50-500tph
Additive Range: 1%-20%*

Options

- Detachable Cement Weigh Hopper
- PLC System
- Dual Power: Electric & Diesel / Hydraulic Power Unit
- Hopper Hardox Wearplates
- Remote Start/Stop
- Tier 3 Engine ROW
- Tier 4 Engine USA
- Tier 5 Engine- EC and UK
- Static Pugmill, all electric



* Dependant on Volume



Specifications

Operational Length	18M" (60')
Operational Height	5M" (16'4")
Loading Height	2.87M (9' 6")
Hydraulic Tank Capacity	377 l (83 gallon)
Diesel Fuel Capacity	216 l (48 gallon)
Engine	four Cylinder Liquid Cooled
Transport Width	2.25M (7' 4")
Transport Height	3.5M (11' 6") Low Loader 2.546M (8' 4") Container
Transport Length	13.5M (44' 3") Low Loader 12.0M (39' 4") Container
Total Weight	19680 kgs (43296 lbs)



Due to Irish Manufacturing Services Limited's policy of continuing product improvements, Specifications are subject to change without notice or obligation. No representation is made that the products depicted herein comply with any laws, codes, rules, regulations or standards. Compliance is the responsibility of the user. Additional safety equipment may be required by the particular location and application of product.

Irish Manufacturing Services Limited

34 Dunroe Road, Clogher, Co. Tyrone, N. Ireland BT76 0DZ

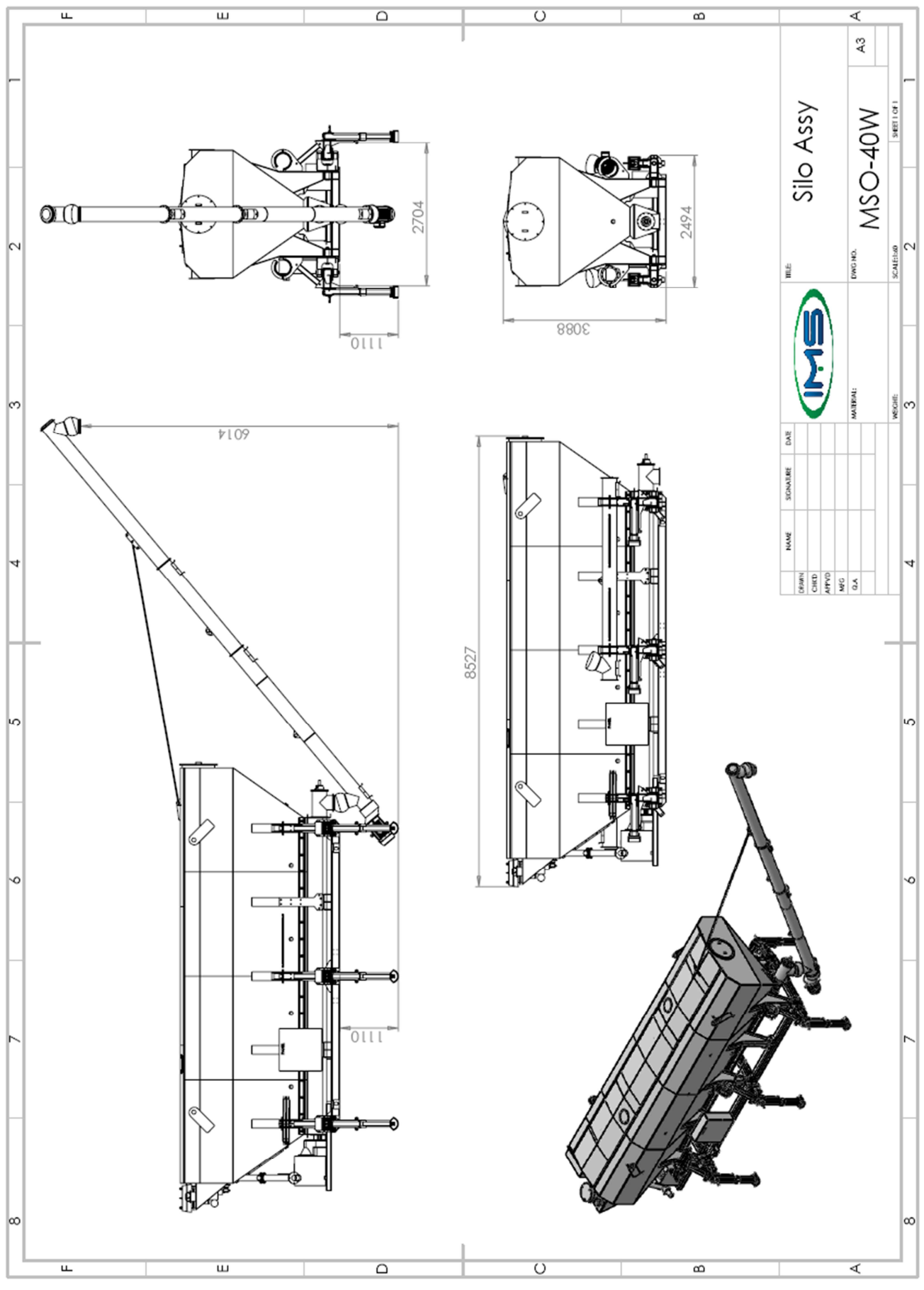
Tel. +44 (0)28 8554 9656 E-mail info@ims-ltd.ie website; www.ims-ltd.ie



MSO-40

40 Tonne Silo





TITLE		Silo Assy	
DRAWING NO.		MSO-40W	
SCALE		1:1	
DATE			
NAME			
SIGNATURE			
MATERIAL			
MFG			
D.A.			
NO. OF SHEETS		2	
SHEET NO.		2	





Standard Features

40 Tonne Silo

Static Unit

Manual Jacklegs

Options

Mobile Unit

50 kVA Diesel Generator

Specifications

Discharge Height	6.014M (19'8")
Operational Height	4.2M (13'8")
Operational Width	2.5M (8' 3")
Operational Length	8.6M (28'3")
Transport Height	3.1M (10'2")
Transport Width	2.5M (8' 3")
Transport Length	8.6M (28'3")
Weight	8000 kg (17637 lbs)



BP1200-9TB

Mobile Blending Plant



 YouTube

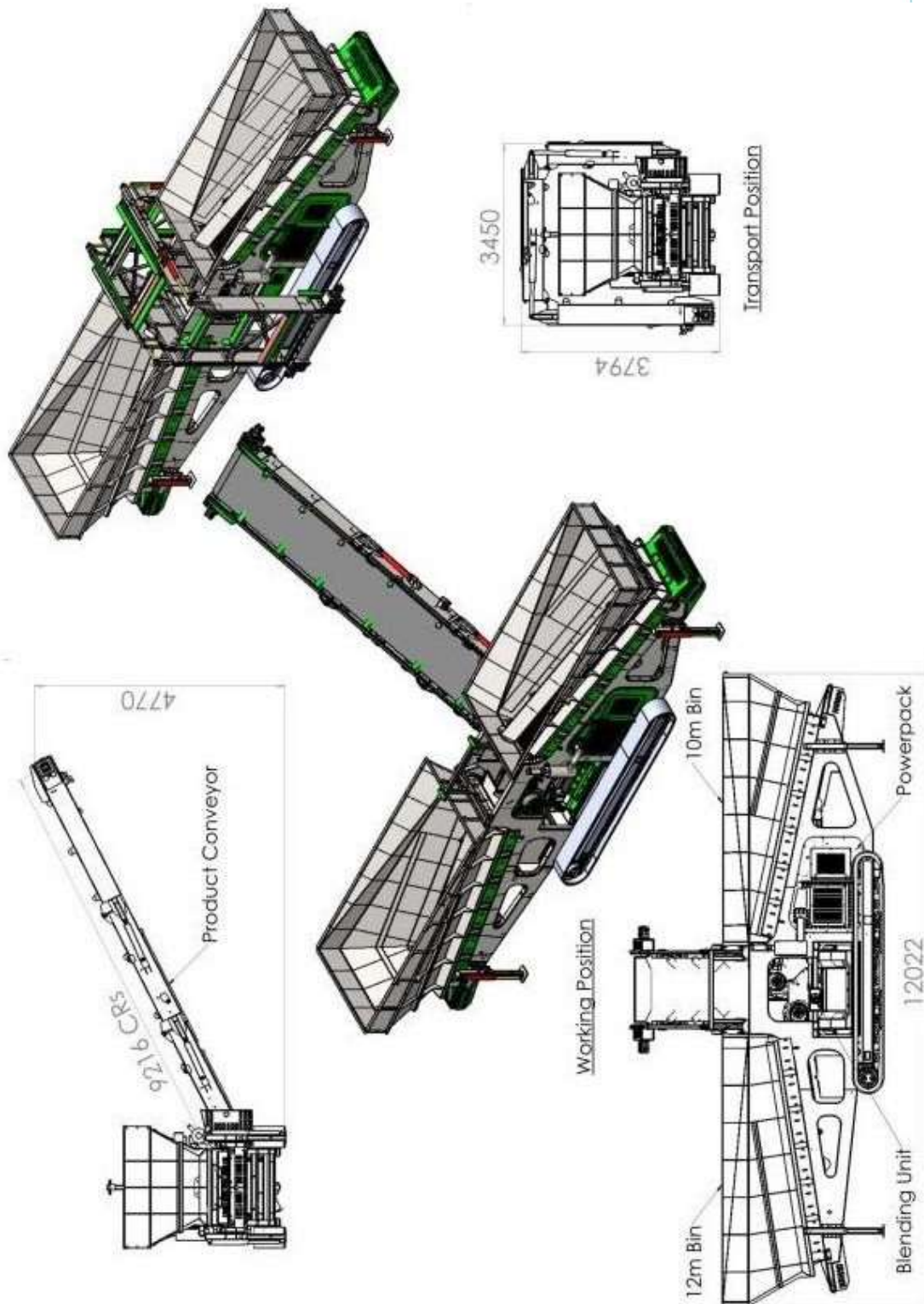
SEARCH

IMS TRACK BLENDING PLANT

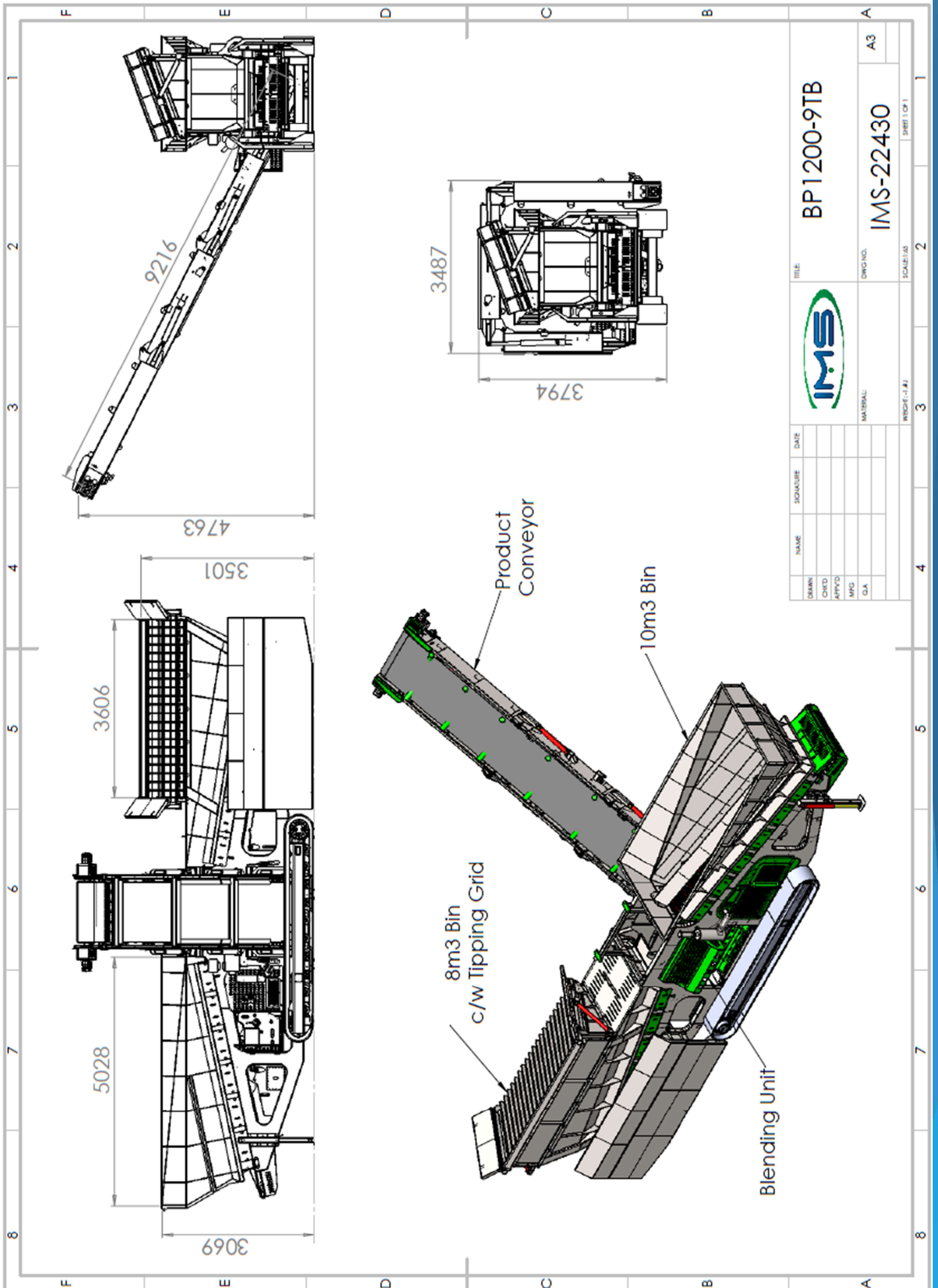




The BP1200-9TB Mobile Blender has been developed by IMS to meet the many applications where blending of material is essential. It can be used in applications where high volumes are required and is capable of producing up to 1000tph of blended material. Where more refined mixing is required, the unit is equipped with a mixing chamber with rotating mixer shaft to thoroughly blend mulch, topsoil, sand, etc. for use in lawn development, golf courses, and similar applications



Tipping Grid Option



DRAWN		SIGNATURE		DATE			TITLE		BP1200-9TB	
CHKD							DWG NO.		IMS-22430	
APP'D							MATERIAL			
MFG							WEGE--(J)		SHEET 1 OF 1	
Q.A.									A3	

Feed Hoppers

12cbm and 10cbm capacity feed hoppers located adjacent to each other to accept material from loading shovels. Hoppers fitted with 1000mm wide belt feeders placed strategically to allow discharge from 10cbm hopper to feed directly on top of discharge from 12cbm hopper. Both Feeder Belts equipped with variable speed control to allow operator to define material ratio from each bin.

Undercarriage

The undercarriage consists of a robust modular type chassis fitted with 4500mm long crawler tracks. 4 No. Hydraulically operated support legs are provided to the 4 corners of the chassis to ensure stability when operational

Discharge Conveyor

1200mm wide x 9.2m long Discharge Conveyor capable of handling up to 1000tph of blended material. Conveyor fitted with heavy duty chevron belt and driven with 2 OMV630 hydraulic motors

Power Unit

Unit powered by a Diesel Engine with multiple hydraulic pumps to provide oil flow for the various functions. Power unit is adequately enclosed in suitable canopy with oil cooler and airflow to control the temperature inside the enclosure. Diesel and hydraulic tanks located adjacent to the Power Unit

Mixer/Shredder Unit

A hydraulic operated single shaft Mixer/Shredder unit is located centrally to accept the discharge from both feeders. This Mixer/Shredder is used when more refined mixing is required but can be moved out of line by hydraulic cylinder when large volume output is required

Controls

All the controls are centrally located and are easy accessible for the operator. The controls include the Engine Starter Panel, the solenoid engagement switches, the manual controls for the hydraulic cylinders, and flow control operation.

Emergency Stop System

Every BP1200-9TB track Conveyor is equipped from the factory with an emergency stop system that will render the plant inoperable when activated, providing added safety for the operator



Standard Features

- 12m³ and 10m³ Feed Hoppers
- Variable Speed Belt Feeders
- Crawler Track Movement
- 75kw Diesel Hydraulic Power Unit Engine
- 1200mm (48") wide Discharge Conveyor
- Hydraulic Folding of Conveyor for Transport
- Hydraulic Support Legs for Operational Stability
- Ultrasonic Run Empty Sensor, Flashing Beacon System
- Pull Cord Emergency Stops



Options

- Hydraulic Tipping Grid
- Dust Covers over Discharge Conveyor
- Belt Scales on Product Conveyor
- Hardox Wareplates in Hoppers
- Remote Stop/Start





Specifications

Operational length	12.02M (40')
Operational height	4.77M (15' 8")
Loading height	3.1M (10' 2")
Hydraulic tank capacity	650 l (143 gallon)
Diesel fuel capacity	450l (100 gallon)
Engine	Caterpillar four cylinder liquid cooled
Transport width	3.45M (11' 4")
Transport height	3.8 M (12' 5")
Transport length	12.02M (40')
Total weight	19400 kgs (42770 lbs)



Due to Irish Manufacturing Services Limited's policy of continuing product improvements, Specifications are subject to change without notice or obligation. No representation is made that the products depicted herein comply with any laws, codes, rules, regulations or standards. Compliance is the responsibility of the user. Additional safety equipment may be required by the particular location and application of product.

Irish Manufacturing Services Limited

34 Dunroe Road, Clogher, Co. Tyrone, N. Ireland BT76 0DZ

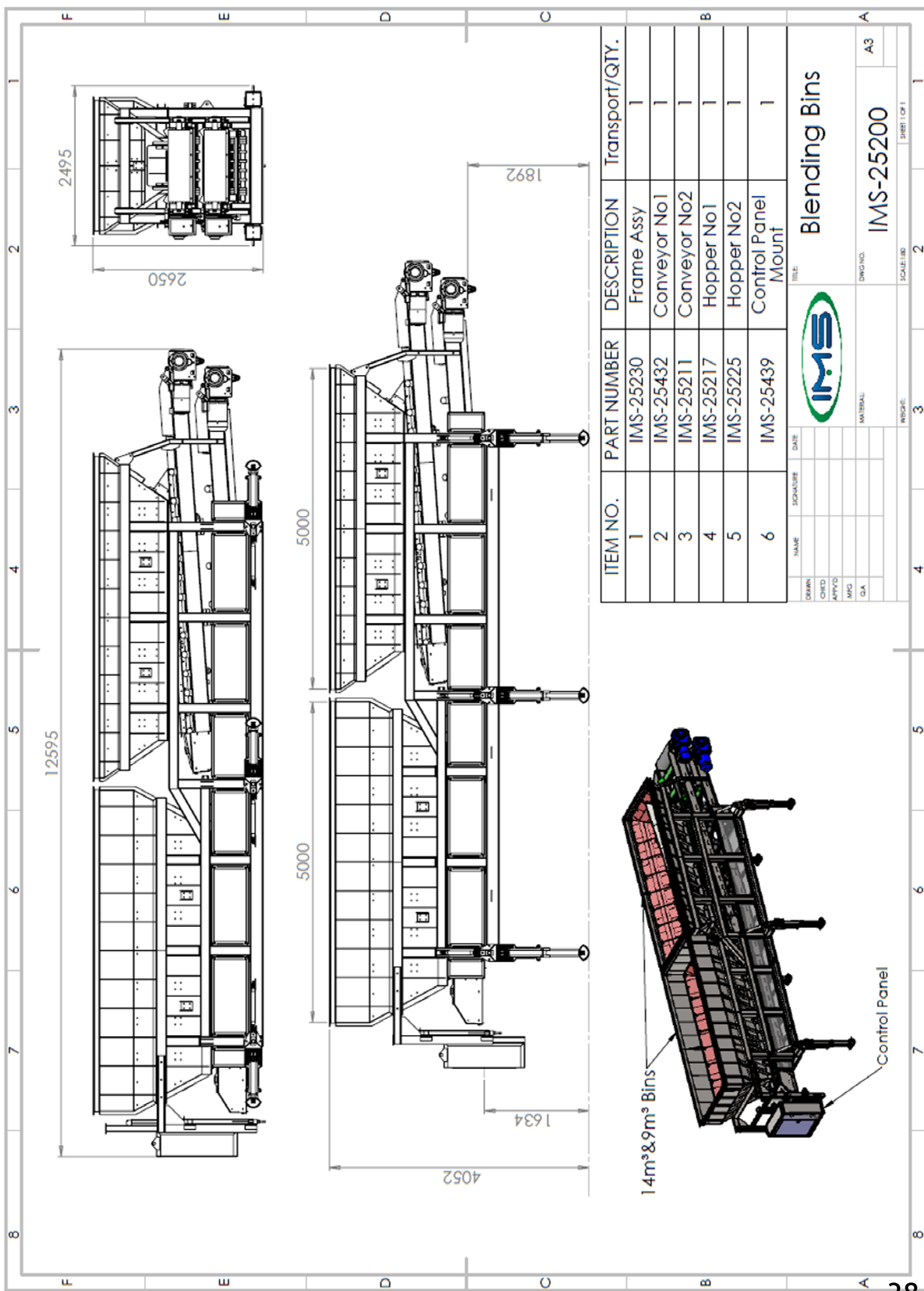
Tel. +44 (0)28 8554 9656 E-mail info@ims-ltd.ie website; www.ims-ltd.ie




BP914-2BS

2 Bin Static Blending Plant





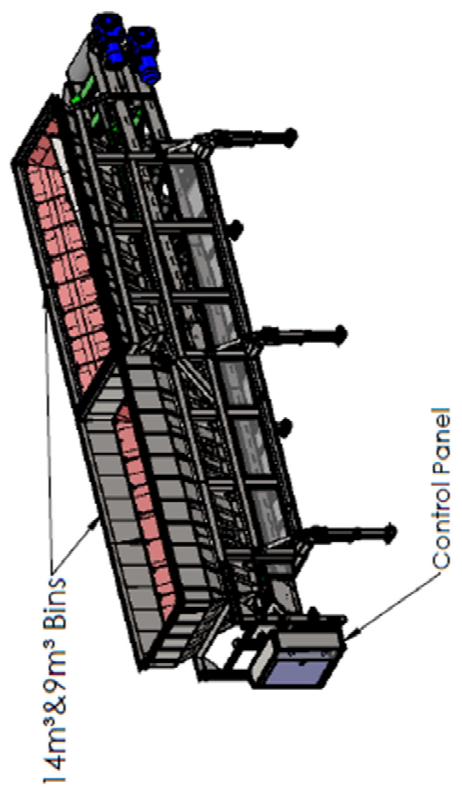
ITEM NO.	PART NUMBER	DESCRIPTION	Transport/QTY.
1	IMS-25230	Frame Assy	1
2	IMS-25432	Conveyor No1	1
3	IMS-25211	Conveyor No2	1
4	IMS-25217	Hopper No1	1
5	IMS-25225	Hopper No2	1
6	IMS-25439	Control Panel Mount	1


Blending Bins

NAME: _____ DATE: _____
 SIGNATURE: _____
 TITLE: _____

DWMR: _____
 CHKD: _____
 APPVD: _____
 MFG: _____
 QA: _____

MATERIAL: _____
 DWG NO. **IMS-25200**
 SCALE: 1:1
 SHEET 1 OF 1



2 x Feed Hoppers constructed from 6mm MS plate. Hopper 1 has a capacity of cubic Metres and Hopper 2 has a capacity of 14 cubic Metres. Both Hoppers are 5m long at Feed point to facilitate Loading Shovel. Discharge from Hoppers via 1050mm wide Variable Speed Belt Feeders with adjustable opening to control material feed. Feeders driven by electric geared motor close coupled to rubber lagged drive pulleys. Feeder fitted with heavy duty belt, impact rollers and variable speed control. Variable Speed Control facilitated by Inverters in the Electric Control Panel.

Complete unit to be mounted in modular type support framework with suitable lifting points

Electrical Control Panel mounted in folded plate type enclosure. Panel to include start/stop controls for Feeders and to include inverters for controlling speed of Belt Feeders. Additional space to be left for the option of Belt Weighers and controls for Discharge Conveyor.

Low Level Sensors are fitted in each Hopper to monitor the level of material. When the sensor is triggered, both Belt Feeders will stop simultaneously.

Emergency Stop System. The BP914-2BS is supplied with an emergency stop system which will render the machine inoperable when activated.

Guarding. All guarding of machines is carried out to the latest European standards and consequently the machine is labelled with the CE mark



OPTIONS

TIPPING GRID

Each Hopper can be fitted with a 3.6m long Hydraulic Tipping Grid. Bar spacing to be set at 75mm. Wing plates to be added to increase the width to 4300mm. Blanking plates to be added to top of Hoppers to close the additional space. Grids operated by 11kw electric hydraulic Power Pack with Remote control for Tipping function

BELT SCALE

Each Feeder can be fitted with a Mechtronics Belt Scale to enable precise weight of material transferred from each hopper

WEAR LINERS

Replaceable 6mm Hardox Wear Liners can be fitted to both Hoppers to assist in abrasive applications

DISCHARGE CONVEYOR

20m Electrical conveyor with 1050mm Belt

AUGER MIXER

Rotavator to give the elements a rough mix





MC 1050-20TF

FEED TRACK CONVEYOR



 YouTube

SEARCH

IMS MC1050-20TF



A leading manufacturer of screening and conveyor equipment, offer the MC1050-20TF Feed tracked stacking conveyor, ensuring regular & consistent feed the MC1050-20TF is the ideal solution for jobs that require high production stockpiling or material transfer



Heavy Duty Construction

Constructed from 5mm thick MS plate designed in 500mm deep section to give added stability and to withstand the rigours of heavy duty operation.

Feed Hopper

8 cubic metre capacity feed hopper with 4.5m wide target area to accept most loaders. Hopper lined with 6mm MS wear plates.

1050mm wide belt feeder with impact rollers, heavy duty belt and variable speed control.

Discharge Conveyor

The conveyor is constructed in 3 sections, the tail section includes a standard reception hopper and the head section includes the conveyor drive, consisting of 2 Sauer-Danfoss hydraulic motors and rubber lagged drive pulley. The belt width is 1050mm and the overall length of the discharge conveyor is 20m.

Diesel-Hydraulic Power

The conveyor is powered by a 74 kw Diesel Engine coupled to a triple hydraulic pump giving sufficient oil flow to drive the variable speed belt feeder, the main discharge conveyor and the crawler tracks.

Undercarriage

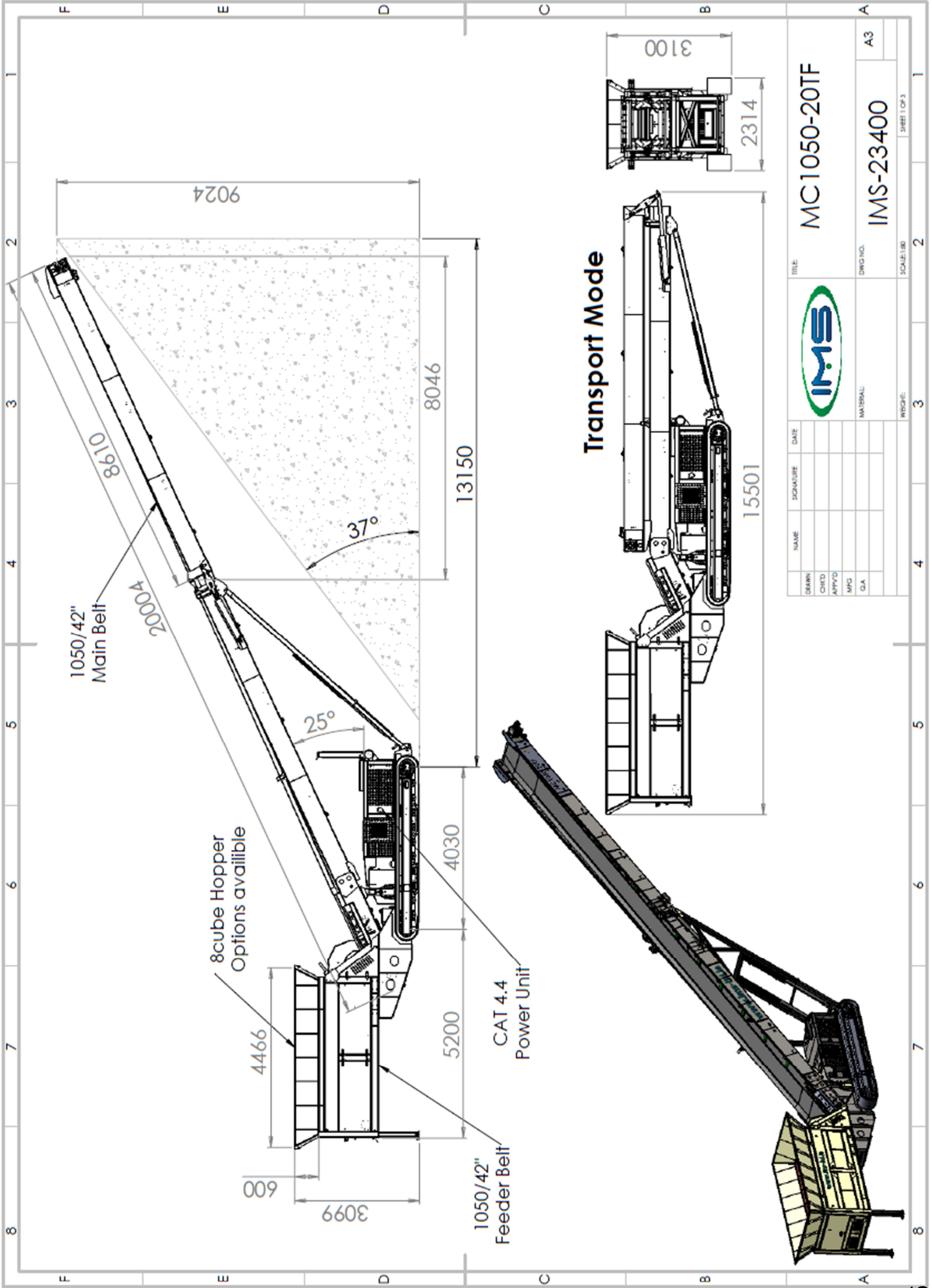
The undercarriage consists of the hydraulically operated crawler tracks together with an adjustable support trestle arrangement, which allows variation in both feed and discharge heights

Hydraulic Folding Mechanism

The folding mechanism of the conveyor head section allows for quick site set up and provides a flexible approach to transport of the unit. The hydraulic folding is designed so that the hydraulic cylinder piston rods are fully protected when the machine is operational

Emergency Stop System

Every MC1050-20TF track Conveyor is equipped from the factory with an emergency stop system that will render the plant inoperable when activated, providing added safety for the operator.



MC1050-20TF



NAME	SIGNATURE	DATE

IMS-23400

DWG. NO.

MATERIAL

SCALE: 1:80

SHEET 1 OF 3

WEIGHT

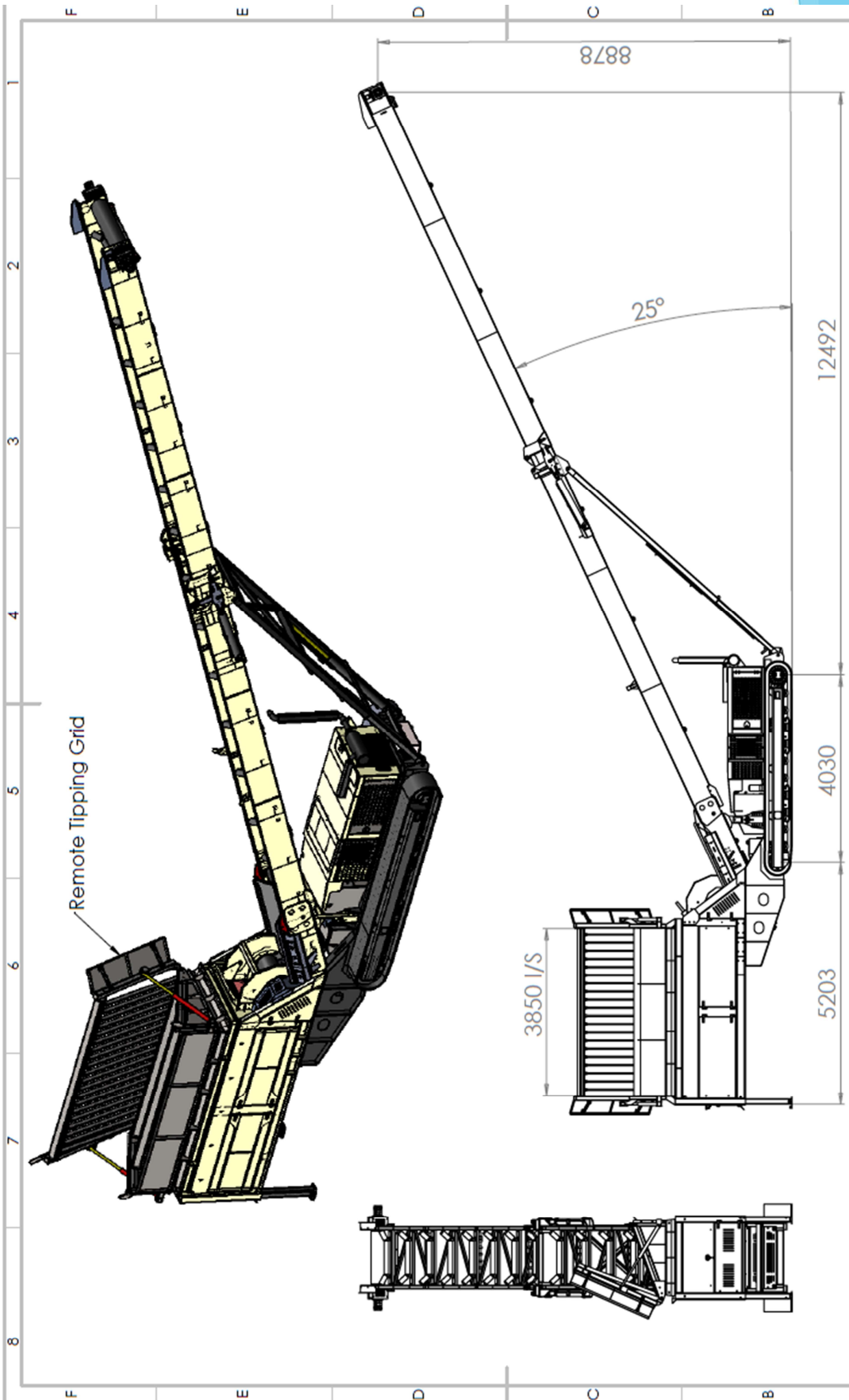
4

5

6

7

8



DRAWN		NAME	SIGNATURE	DATE
CHECKED				
APPROVED				
MFG				
Q.A.				


MC1050-20TF
 TITLE:

DWG NO. **IMS-23400-Grid**
 SCALE: 1:1
 SHEET 1 OF 1

MATERIAL:
 WISCHE: 3
 WISCHE: 2
 SCALE: 1:1



Standard Features

Detachable Hopper to allow for container transport –
Hopper in 20' Container, Conveyor in 40' Container

Extended foldable head section to give additional reach from tracks
13m from front of tracks to discharge point

1050mm (42") wide Feeder and Main Belt

127mm (5") Impact Rollers under Feeder

Mild Steel Replaceable Liner Plates in Hopper as standard

Helmet Door on front of Hopper to regulate flow of material

8 cubic metre capacity Hopper

Cartridge type Feeder – Can be removed easily for maintenance

User friendly hydraulic inclination (no pins required)

Crawler Track Movement

74 kw Diesel-Hydraulic Drive

1050mm (42") wide 3 ply belt in both Feeder and Discharge Conveyor

Hydraulic Folding on Head Section

Hydraulic Raise and Lower

Specifications

Operational Length	23.5M (77')
Operational Height	9.03M (30")
Loading Height	3.1M (10")
Hydraulic Tank Capacity	600 l (132 Gallon)
Diesel Fuel Capacity	275 l (61 Gallon)
Engine	Caterpillar Liquid Cooled
Engine Power	74kw (100HP)
Transport Width	2.314M (7' 8")
Transport Height	3.10M (10')
Transport Length	15.5M (51')
Total Weight	17000 kgs (37400 lbs)



Options

Remote Control Hydraulic Tipping Grid

Hardox 400 Wear Liners In Hopper

Rear Low Loading Hopper

Shredder on discharge from Feeder

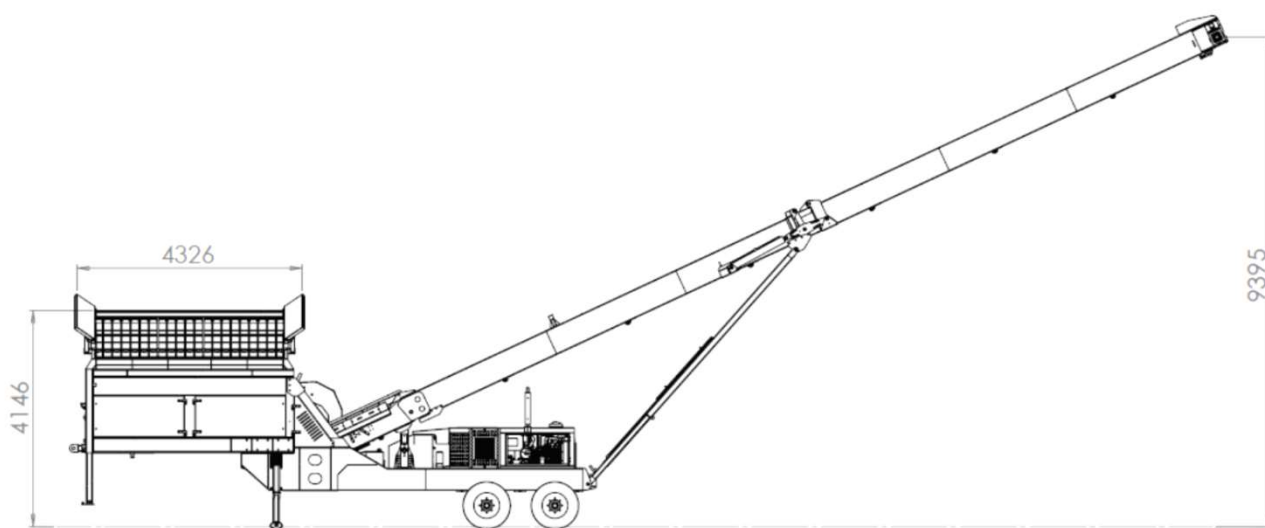
Heavy Duty Belt On Discharge Conveyor

Chevron Belt On Discharge Conveyor

Dual Power: Electric & Diesel / Hydraulic Power Unit

PVC Covers

Wheeled Version MC1050-20WF (Drawing below) includes road braking system to suit region



Due to Irish Manufacturing Services Limited's policy of continuing product improvements, Specifications are subject to change without notice or obligation. No representation is made that the products depicted herein comply with any laws, codes, rules, regulations or standards. Compliance is the responsibility of the user. Additional safety equipment may be required by the particular location and application of product.

Irish Manufacturing Services Limited

34 Dunroe Road, Clogher, Co. Tyrone, N. Ireland BT76 0DZ

Tel. +44 (0)28 8554 9656 E-mail info@ims-ltd.ie website; www.ims-ltd.ie



MC 1050-14TF FEED TRACK CONVEYOR



A leading manufacturer of screening and conveyor equipment, offer the MC1050-14TF Feed tracked stacking conveyor, ensuring regular & consistent feed the MC1050-14TF is the ideal solution for jobs that require high production stockpiling or material transfer



Heavy Duty Construction

Constructed from 5mm thick MS plate designed in 500mm deep section to give added stability and to withstand the rigours of heavy duty operation.

Feed Hopper

8 cubic metre capacity feed hopper with 4.5m wide target area to accept most loaders. Hopper lined with 6mm MS wear plates.

1050mm wide variable speed belt feeder c/w impact rollers and mild steel wearplates.

Discharge Conveyor

The conveyor is constructed in 3 sections, the tail section includes a standard reception hopper and the head section includes the conveyor drive, consisting of a hydraulic motor and rubber lagged drive pulley. The belt width is 1050mm and the overall length of the discharge conveyor is 14.5m.

Diesel-Hydraulic Power

The conveyor is powered by a 44 kw Diesel Engine coupled to a triple hydraulic pump giving sufficient oil flow to drive the variable speed belt feeder, the main discharge conveyor and the crawler tracks.

Undercarriage

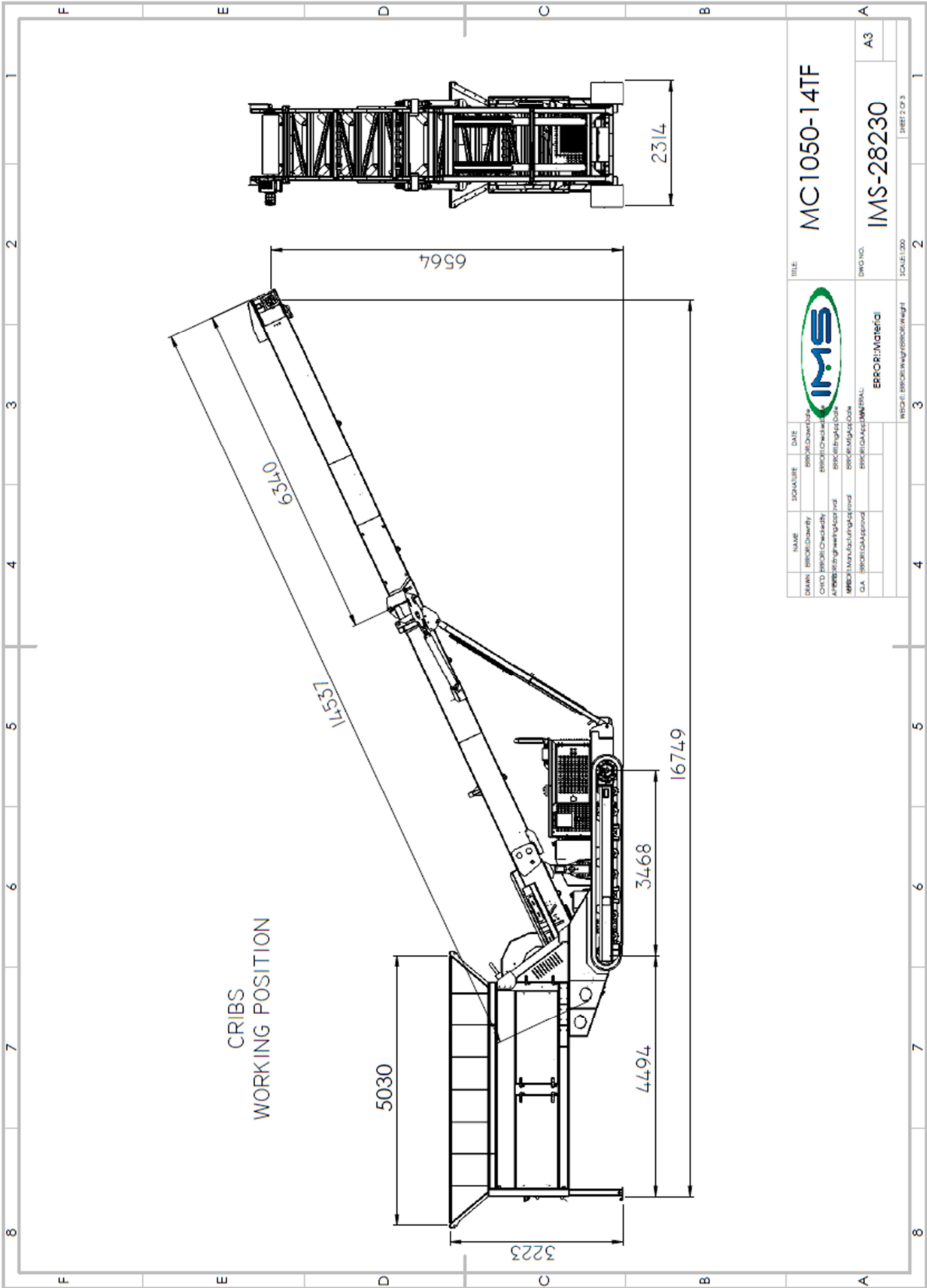
The undercarriage consists of the hydraulically operated crawler tracks together with an adjustable support trestle arrangement, which allows variation in both feed and discharge heights

Hydraulic Folding Mechanism

The folding mechanism of the conveyor head section allows for quick site set up and provides a flexible approach to transport of the unit. The hydraulic folding is designed so that the hydraulic cylinder piston rods are fully protected when the machine is operational

Emergency Stop System

Every MC1050-14TF track Conveyor is equipped from the factory with an emergency stop system that will render the plant inoperable when activated, providing added safety for the operator.



TITLE: MC1050-14TF

DWG NO. IMS-28230
A3

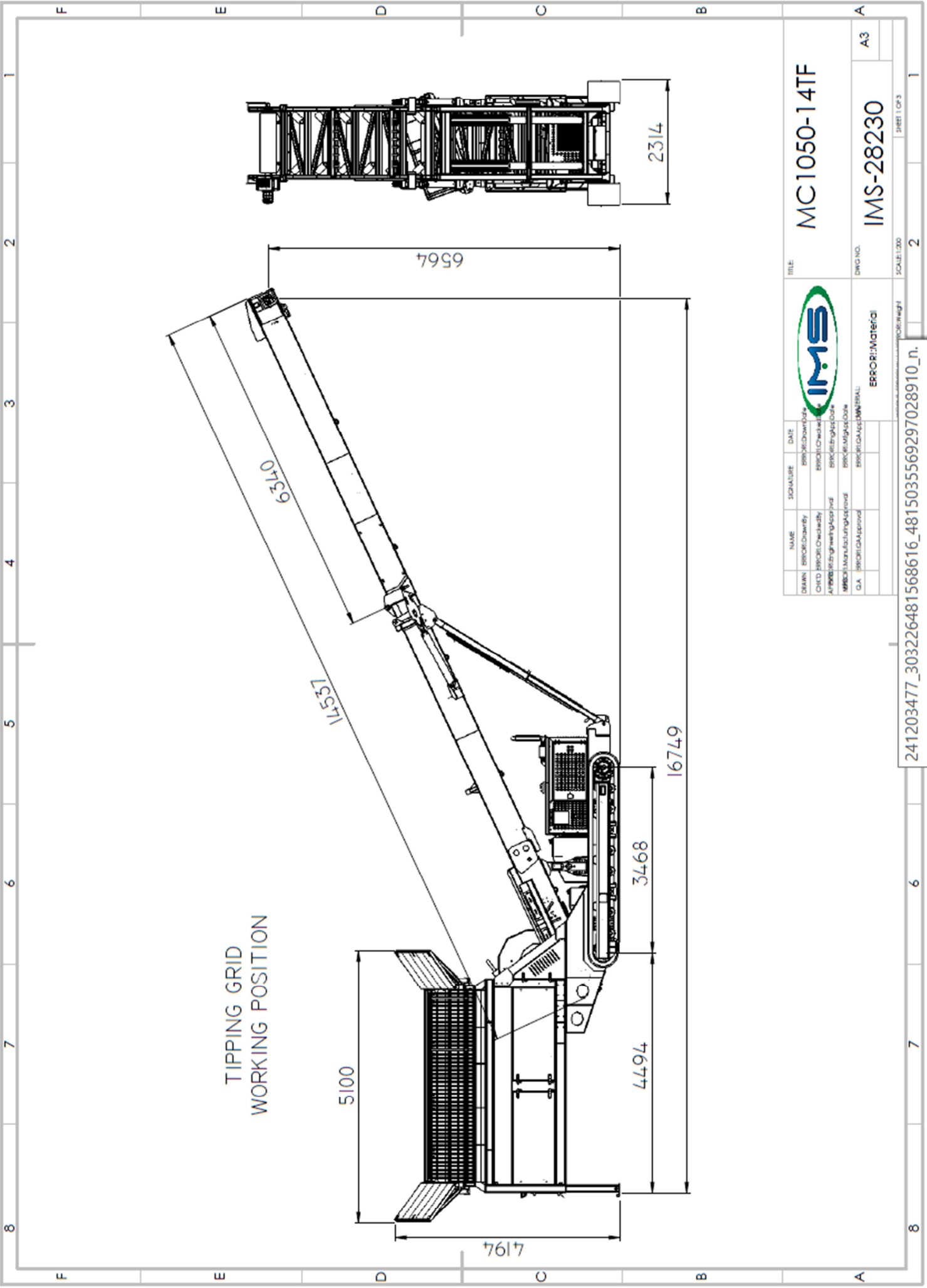
NAME	SIGNATURE	DATE
DESIGN	PROJECT/Drawn by	PROJECT/Drawn Date
CHKD	PROJECT/Checked by	PROJECT/Checked Date
APP'D	PROJECT/Engineer/Approved	PROJECT/Engineer/Approved Date
MANUFACTURING	PROJECT/Manufacturing/Approved	PROJECT/Manufacturing/Approved Date
QA	PROJECT/QA/Approved	PROJECT/QA/Approved Date

ERROR: Material

SCALE: 1:300

WEIGHT: PROJECT/Weight/PROJECT/Weight

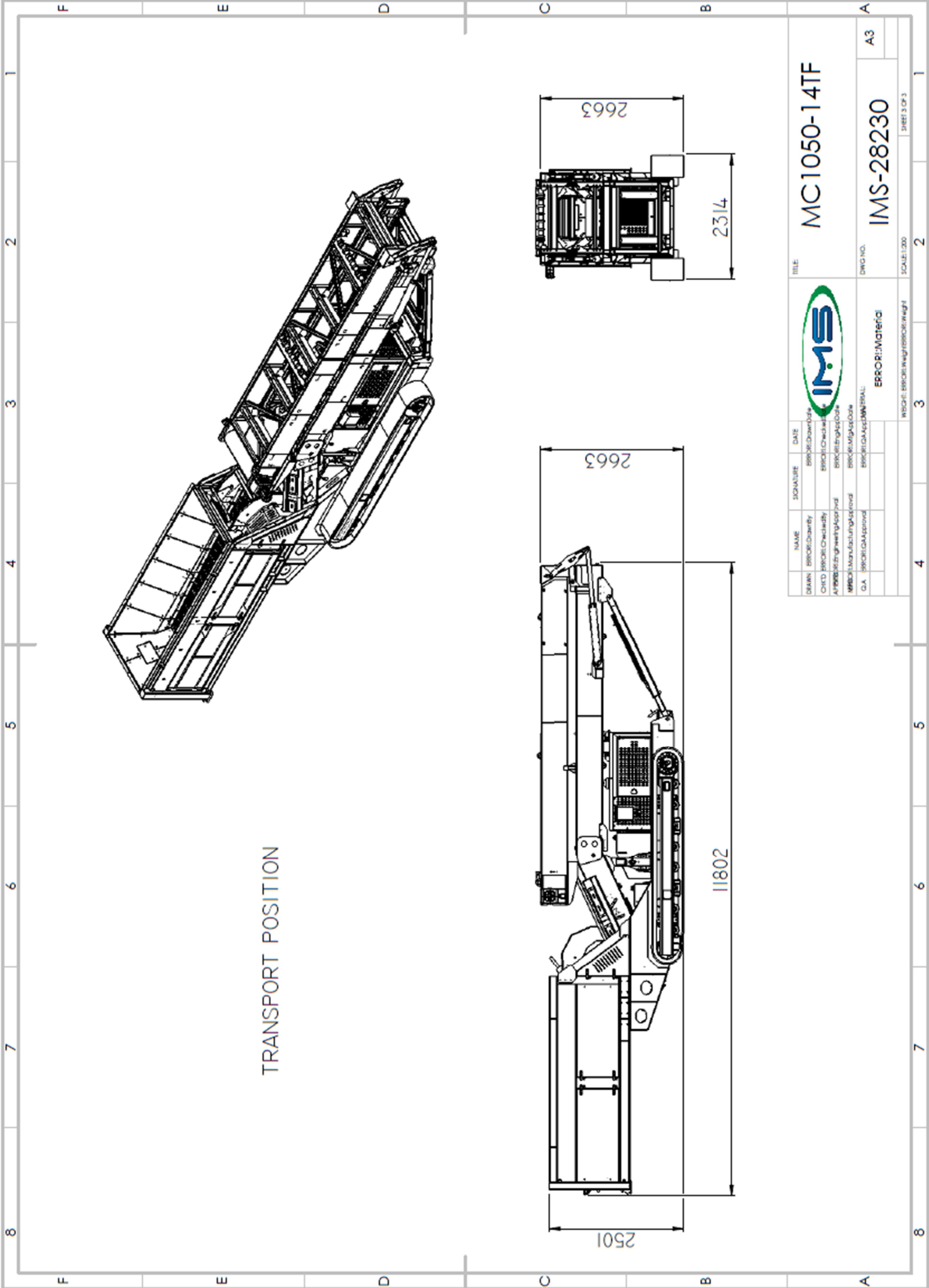
SHEET 2 OF 3



TIPPING GRID
WORKING POSITION

DRAWN: [Signature]		DATE: [Date]	TITLE: MC1050-14TF
CHECKED: [Signature]	APPROVED: [Signature]	PROJECT NO.: IMS-28230	SHEET NO.: 2
MANUFACTURING APPROVAL: [Signature]	QA APPROVAL: [Signature]	PROJECT APPROVAL: [Signature]	SCALE: 1:200
ERROR: Material			A3

241203477_303226481568616_4815035569297028910_n.
img - Photos



TRANSPORT POSITION

NAME	SIGNATURE	DATE	TITLE
DRAWN			MC1050-14TF
DESIGNED			
CHECKED			
APPROVED			
MANUFACTURING			
QA			

	
<p>ERROR: Material</p>	<p>ERROR: Material</p>
<p>SCALE: 1:200</p>	<p>SCALE: 1:200</p>



Standard Features

- Suitable for container transportation
- 1050mm (42") wide Feeder and Main Belt
- 127mm (5") Impact Rollers under Feeder
- Mild Steel Replaceable Liner Plates in Hopper as standard
- Helmet Door on front of Hopper to regulate flow of material
- 8 cubic metre capacity Hopper
- Cartridge type Feeder – Can be removed easily for maintenance
- User friendly hydraulic inclination (no pins required)
- Crawler Track Movement
- 44 kw Diesel-Hydraulic Drive
- 1050mm (42") wide 3 ply belt in both Feeder and Discharge Conveyor
- Hydraulic Folding on Head Section
- Hydraulic Raise and Lower

Specifications

Operational Length	14.142M (60')
Operational Height	6.6M (21' 7")
Loading Height	3.1M (10')
Hydraulic Tank Capacity	600 l (132 Gallon)
Diesel Fuel Capacity	275 l (61 Gallon)
Engine	Caterpillar Liquid Cooled
Engine Power	44kw (59HP)
Transport Width	2.314M (7' 8")
Transport Height	2.66M (8' 9")
Transport Length	11.8M (38' 9")
Total Weight	15000 kgs (33069 lbs)



Options

Remote Control Hydraulic Tipping Grid

Hardox 400 Wear Liners In Hopper

Rear Low Loading Hopper

Shredder on discharge from Feeder

Heavy Duty Belt On Discharge Conveyor

Chevron Belt On Discharge Conveyor

Dual Power: Electric & Diesel / Hydraulic Power Unit

PVC Covers

Hopper Extensions 5m Loading Area

PLC Controlled Feeder to inference with Pugmill or mixing plant

Remote Stop Start

Remote Tracking



Due to Irish Manufacturing Services Limited's policy of continuing product improvements, Specifications are subject to change without notice or obligation. No representation is made that the products depicted herein comply with any laws, codes, rules, regulations or standards. Compliance is the responsibility of the user. Additional safety equipment may be required by the particular location and application of product.

Irish Manufacturing Services Limited

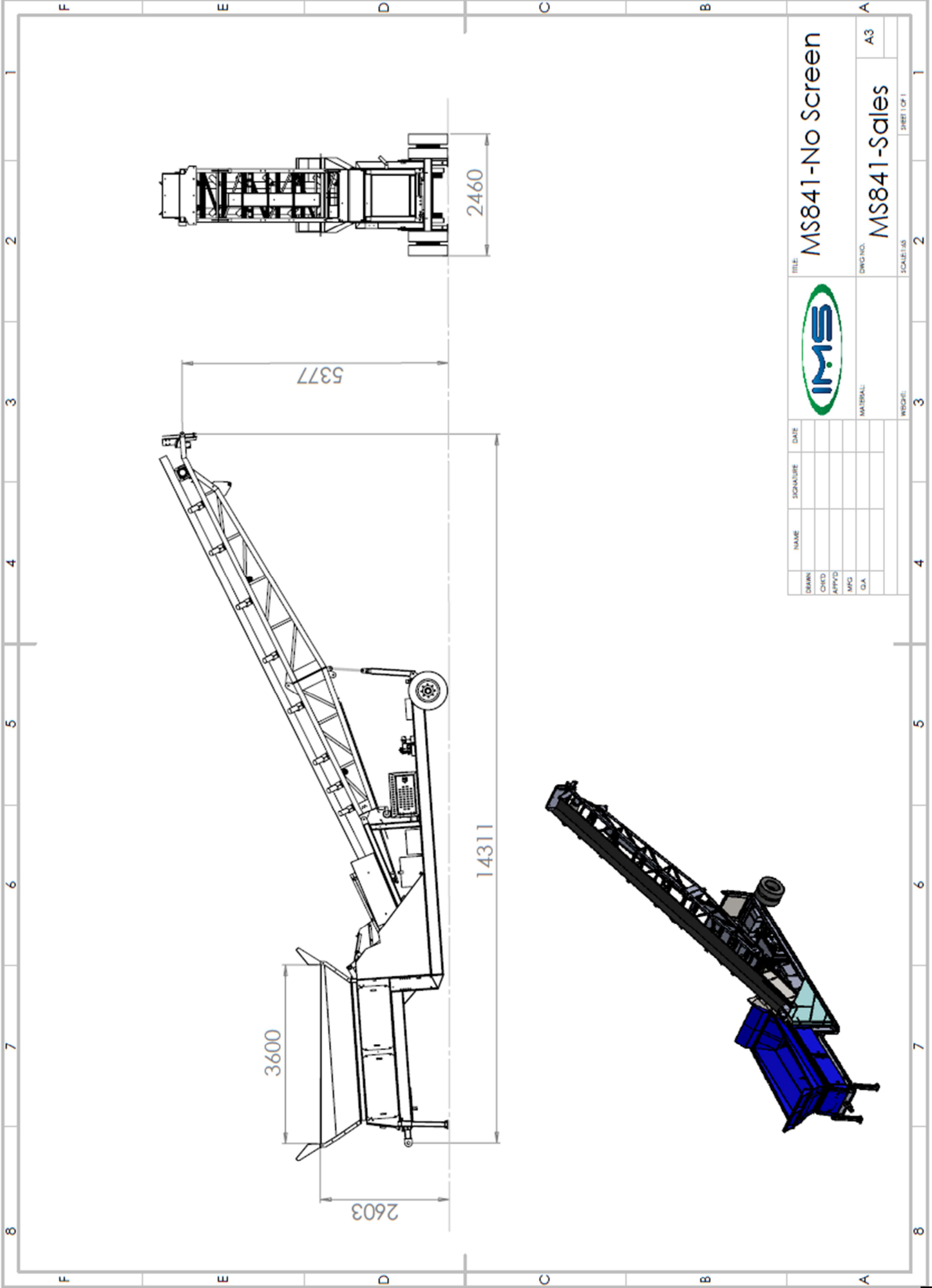
34 Dunroe Road, Clogher, Co. Tyrone, N. Ireland BT76 0DZ

Tel. +44 (0)28 8554 9656 E-mail info@ims-ltd.ie website; www.ims-ltd.ie



MH750-11WF
FEED WHEEL CONVEYOR





DRAWN		SIGNATURE		DATE	
CHKD					
APPD					
MFG					
Q.A.					
TITLE: MS841-No Screen					
DWG NO. MS841-Sales					
A3					
SCALE: 1:1					
SHEET 1 OF 1					



Features and Benefits

7 Yd (5.3M) Hopper with Variable Speed Belt Feeder and Remote Tipping Grid

Maximum Feed Size 6"

Diesel Hydraulic Drive to latest emission standards

Alternative Electric Hydraulic Drive

Fifth Wheel Towing with transport wheels and axle

Site Towbar for localized movement with site equipment



Specification.

Total Weight:	18750lbs (8500kgs)
Working Length:	46'11" (14.311m)
Working Width:	8'1" (2.460m)
Working Height:	19' 8" (6.00m)
Diesel Power:	50HP (37KW) Tier 4F (USA) /Tier 5 (Europe)
Electric Power:	50HP (37KW)





Hopper and Grid

Capacity 7 cu yd. (5.3cu M)
Remote Control Tipping Grid
Grid Spacing 4" (100mm), 5" (125mm), 6" (150mm)
Single Bar Grid for easy replacement
Feed In Height 10'6" (3.2m)
Target Area 12'3" x 6'0" (3.7m x 1.8m)

Belt Feeder

30" (750mm) 2 ply plain belt
Danfoss Direct Drive Hydraulic Motor
Variable Speed Control

Main Conveyor

30" (750mm) 2 ply plain belt
Danfoss Direct Drive Hydraulic Motor
Manual

Screenbox

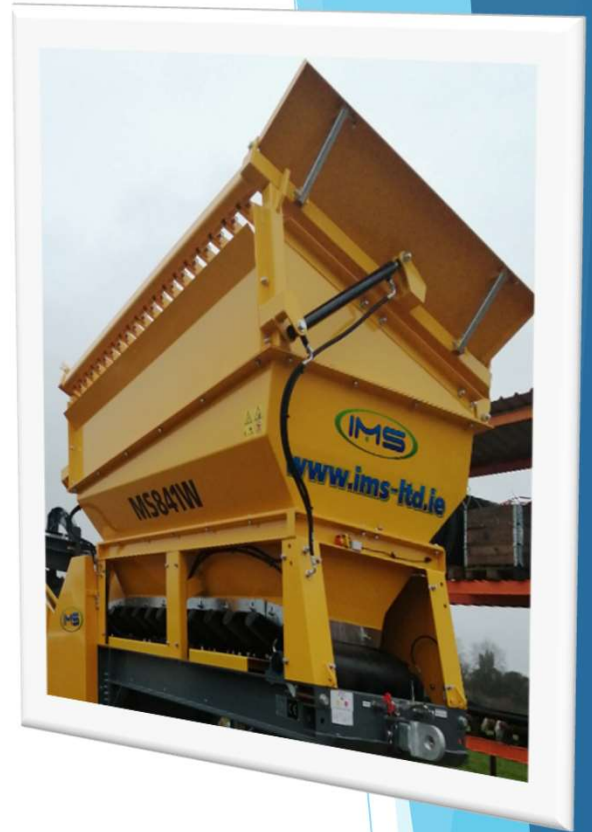
8' x 4' (2500mm x 1250mm) Incline Double Deck 4 bearing screen
End Tensioned Meshes
Manual Screen Tensioning
Manual Screen Angle Adjustment

Power Unit

50HP (37KW) Diesel Engine (Tier 4F (USA) / Tier 5 (EC)
Fuel Tank 35 gallon (160 litres)
Hydraulic Tank 50 gallon (220 litres)
Tandem 2PL 070 Hydraulic Pump

Axle and Wheels

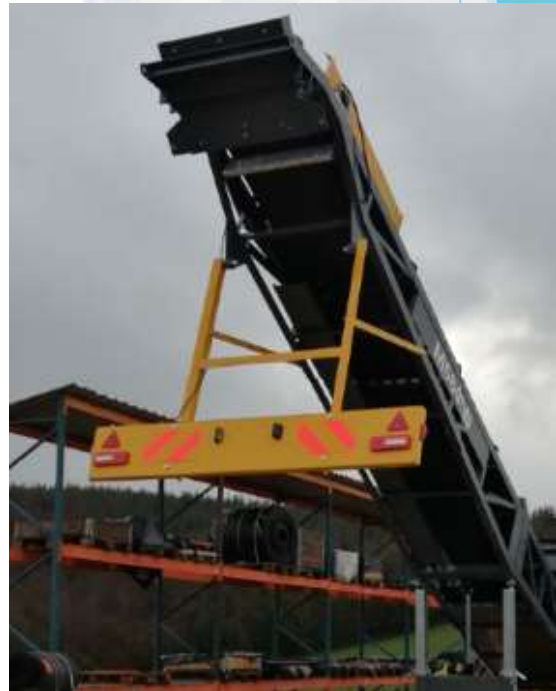
Single Axle non-braked with Twin 7.50 x 8 stud Wheels





Options

- Electric Hydraulic Powerpack
- Single Shaft Shredder with hammers or flails
- Braked Axle
- Light Board
- Magnet
- Anti Rollback Brackets
- Chevron Belt



Due to Irish Manufacturing Services Limited's policy of continuing product improvements, Specifications are subject to change without notice or obligation. No representation is made that the products depicted herein comply with any laws, codes, rules, regulations or standards. Compliance is the responsibility of the user. Additional safety equipment may be required by the particular location and application of product.

Irish Manufacturing Services Limited
34a Dunroe Road, Clogher, Co. Tyrone, N. Ireland BT76 0DZ
Tel. +44 (0)28 8554 9656 E-mail info@ims-ltd.ie website; www.ims-ltd.ie



MC 1050-20T

65ft TRACK CONVEYOR

42 INCH BELT

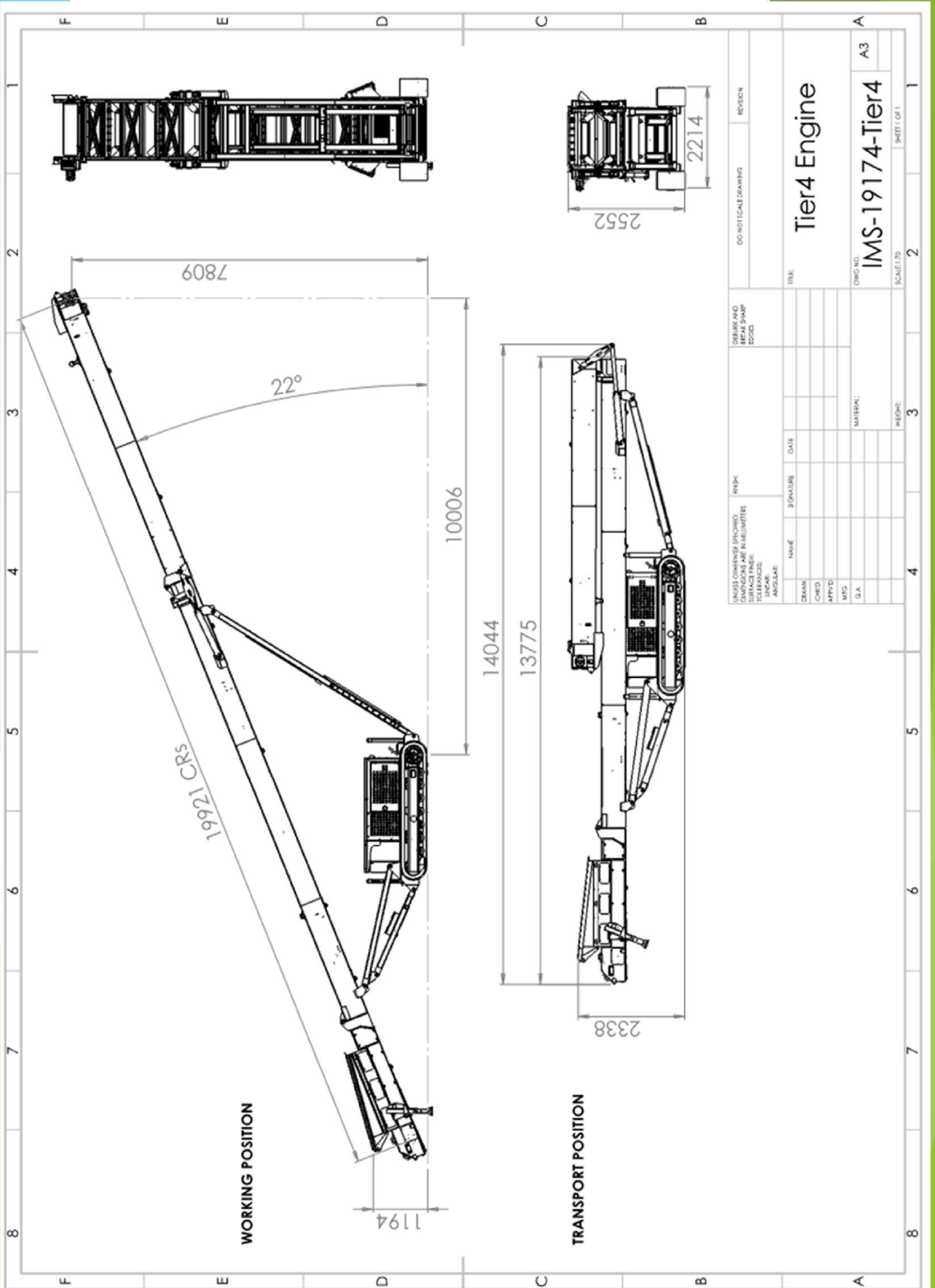


 YouTube

SEARCH

IMS MC1050-20T





UNLESS OTHERWISE SPECIFIED, DIMENSIONS ARE IN MILLIMETERS		DO NOT SCALE DRAWING		REVISION	
SURFACE FINISH:		DIMENSIONS AND TOLERANCES:		REVISION	
TOLERANCES:		EDGES:		REVISION	
LINEAR:		RADIUS:		REVISION	
ANGULAR:		CHAMFER:		REVISION	
NAME		SIGNATURE		DATE	
DESIGN		CHECKED		APPROVED	
MATERIAL		MATERIAL		MATERIAL	
G.A.		G.A.		G.A.	
PAGE: 3		PAGE: 2		PAGE: 1	
SCALE: 1/3		SCALE: 1/3		SCALE: 1/3	
SHEET 1 OF 1		SHEET 1 OF 1		SHEET 1 OF 1	

Tier4 Engine

DWG NO: **IMS-19174-Tier4**
 A3
 SCALE: 1/3
 SHEET 1 OF 1



Heavy Duty Construction

Constructed from 5mm thick MS plate designed in 500mm (20") deep section to give added stability and to withstand the rigours of heavy duty operation

Conveyor

The conveyor is constructed in 3 sections , the tail section includes a generous feed hopper and the head section includes the conveyor drive , consisting of a Sauer-Danfoss hydraulic motor and rubber lagged drive pulley

Diesel-Hydraulic Power Unit

The conveyor is powered by a 38 kw Diesel Engine coupled to a tandem hydraulic pump giving sufficient oil flow to drive both the conveyor at maximum output and to operate the crawler tracks

Undercarriage

The undercarriage consists of the hydraulically operated crawler tracks together with an adjustable support trestle arrangement, which allows variation in both feed and discharge heights

Hydraulic Folding Mechanism

The folding mechanism of the conveyor head section allows for quick site set up and provides a flexible approach to transport of the unit. The hydraulic folding is designed so that the hydraulic cylinder piston rods are fully protected when the machine is operational

Emergency Stop System

Every MC1050-20T track Conveyor is equipped from the factory with an emergency stop system that will render the plant inoperable when activated, providing added safety for the operator.



Standard Features

- Crawler Track Movement
- 38kw Diesel-Hydraulic Drive
- 1050mm (42") wide 3 ply belt
- Hydraulic Folding on Head Section
- Hydraulic Raise and Lower
- Manual Folding of Tail Section



Options

- Hydraulic Folding of Tail Section
- Heavy Duty Belt
- Chevron Belt
- Dual Hydraulic Drive for increased throughput
- Feed Impact Bars
- Conveyor Belt Variable Speed Control
- Dual Power: Electric & Diesel / Hydraulic Power Unit
- PVC covers
- Galvanised Steel Covers
- Pull Cord Emergency Stops
- Feedboot Mild Steel Wear Plates
- Feedboot Hardox Wearplates
- Feedboot Extensions
- Radio Remote Control
- 48" Belt Verion



Specifications

Operational Length	20M (65')
Operational Height	8.06M (26' 6")
Loading Height	1.2M-3.4M (4'0"-11'3")
Hydraulic Tank Capacity	320 l (70 gallon)
Diesel Fuel Capacity	155 l (35 gallon)
Engine	Caterpillar
Engine Power	38 kw (51 HP)
Transport Width	2.25M (7' 4")
Transport Height	2.5M (8' 2")
Transport Length	10.7M (35' 10")
Total Weight	9560 kgs (21030 lbs)



Due to Irish Manufacturing Services Limited's policy of continuing product improvements, Specifications are subject to change without notice or obligation. No representation is made that the products depicted herein comply with any laws, codes, rules, regulations or standards. Compliance is the responsibility of the user. Additional safety equipment may be required by the particular location and application of product.

Irish Manufacturing Services Limited

34 Dunroe Road, Clogher, Co. Tyrone, N. Ireland BT76 0DZ

Tel. +44 (0)28 8554 9656 E-mail info@ims-ltd.ie website; www.ims-ltd.ie



MC 1050-24T

80ft TRACK CONVEYOR

42 INCH BELT

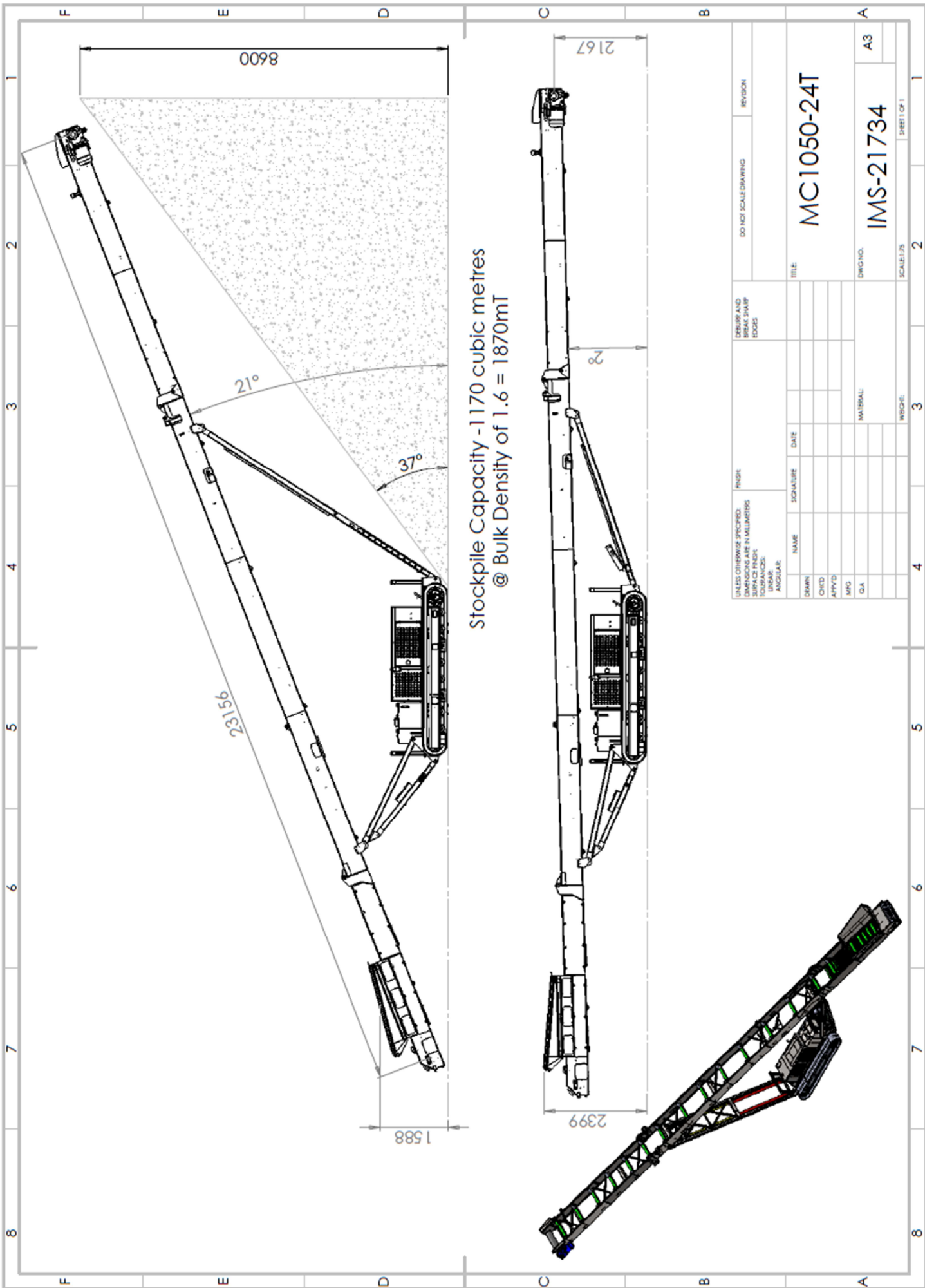


 YouTube

SEARCH

IMS MC1050-24T





Stockpile Capacity - 1170 cubic metres
 @ Bulk Density of 1.6 = 1870mT

DIMENSIONS SPECIFIED: DIMENSIONS ARE IN MILLIMETERS SURFACE FINISH: FINISH: TOLERANCES: ANGULAR:		FINISH: DATE: MATERIAL:		DRAWING AND BREAK SHARP EDGES		DO NOT SCALE DRAWING		REVISION	
NAME	SIGNATURE	DATE	TITLE		MC1050-24T		SHEET 1 OF 1		A3
DRAWN							SCALE: 1:5		2
CHECKED									1
APPROVED									
MFG									
QA									



Heavy Duty Construction

Constructed from 5mm thick MS plate designed in 500mm deep section to give added stability and to withstand the rigours of heavy duty operation.

Conveyor

The conveyor is constructed in 3 sections , the tail section includes a generous feed hopper and the head section includes the conveyor drive, consisting of a Sauer-Danfoss hydraulic motor and rubber lagged drive pulley.

Diesel-Hydraulic Power Unit

The conveyor is powered by a 55 kw Diesel Engine coupled to a tandem hydraulic pump giving sufficient oil flow to drive both the conveyor at maximum output and to operate the crawler tracks.

Undercarriage

The undercarriage consists of the hydraulically operated crawler tracks together with an adjustable support trestle arrangement, which allows variation in both feed and discharge heights.

Hydraulic Folding Mechanism

The folding mechanism of the conveyor head section and tail sections allows for quick site set up and provides a flexible approach to transport of the unit. The hydraulic folding is designed so that the hydraulic cylinder piston rods are fully protected when the machine is operational.

Emergency Stop System

Every MC1050-24T Track Conveyor is equipped from the factory with an emergency stop system that will render the plant inoperable when activated, providing added safety for the operator.



Standard Features

Crawler Track Movement
55 kw Diesel-Hydraulic Drive
1050mm (42") wide 3 ply belt
Hydraulic Folding on Head Section
Hydraulic Folding of Tail Section
Hydraulic Raise and Lower
Single Hydraulic Motor Drive (Sauer-Danfoss)

Options

Heavy Duty Belt
Conveyor Belt Variable Speed Control
Dual Hydraulic Drive For Increased Throughput
Feed Impact Bars
Galvanised Steel Covers
Dual Power: Electric & Diesel/Hydraulic Power Unit
PVC Covers
Feedboot Hardox Wareplates
Pull Cord Emergency Stops
Feedboot Mild Steel Wear Plates
15 Tonne Capacity Hopper
Feedboot Extensions
Radio Remote Control
Remote Variable Speed Belt Speed Control



Specifications

Operational Length	24M (79')
Operational Height	9.02M (29'7")
Loading Height	1.48M-2.46M (4'9"-8'3")
Hydraulic Tank Capacity	377 l (83 Gallon)
Diesel Fuel Capacity	216 l (48 Gallon)
Engine	Caterpillar
Engine Power	55kw (74HP)
Transport Width	2.25M (7' 4")
Transport Height	2.5M (8' 2")
Transport Length	12.2M (40' 3")
Total Weight	11470 kgs (25234 lbs)



Due to Irish Manufacturing Services Limited's policy of continuing product improvements, Specifications are subject to change without notice or obligation. No representation is made that the products depicted herein comply with any laws, codes, rules, regulations or standards. Compliance is the responsibility of the user. Additional safety equipment may be required by the particular location and application of product.

Irish Manufacturing Services Limited

34 Dunroe Road, Clogher, Co. Tyrone, N. Ireland BT76 0DZ

Tel. +44 (0)28 8554 9656 E-mail info@ims-ltd.ie website; www.ims-ltd.ie



MC 1050-30T

100ft TRACK CONVEYOR
42 INCH BELT

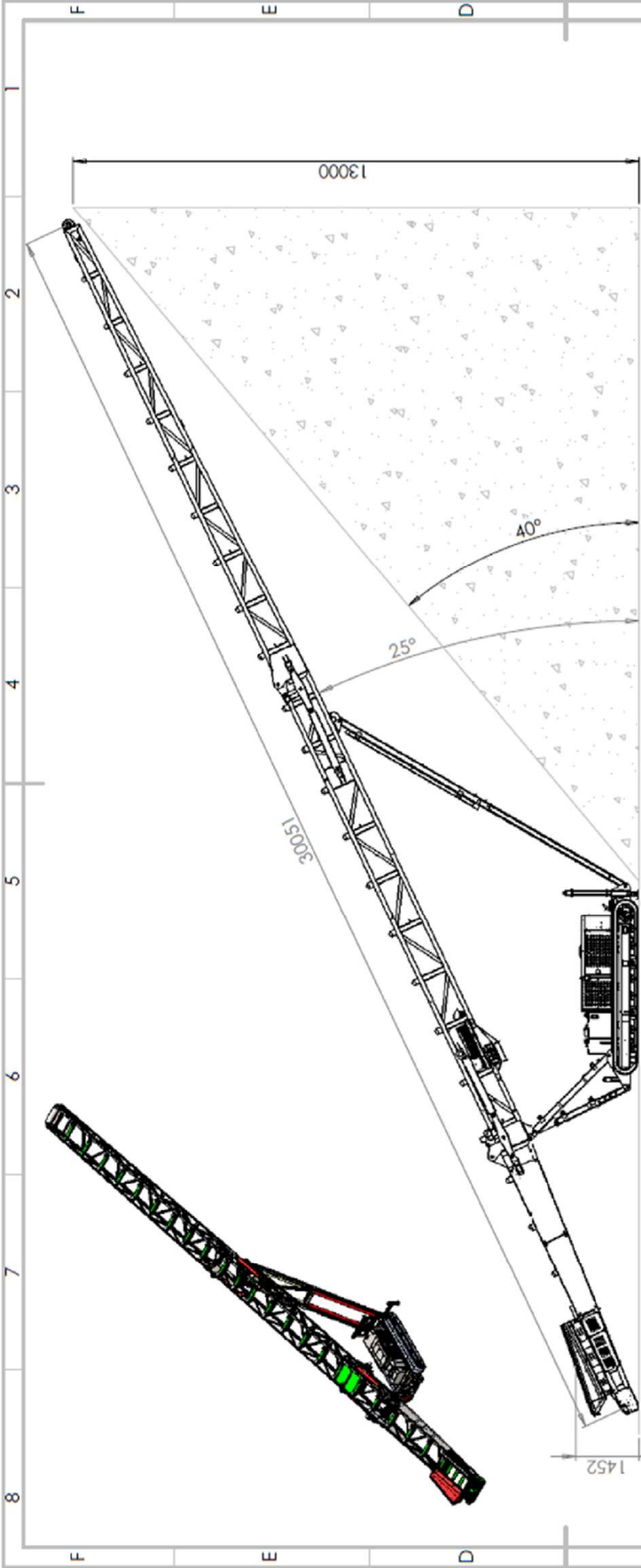


 YouTube

SEARCH

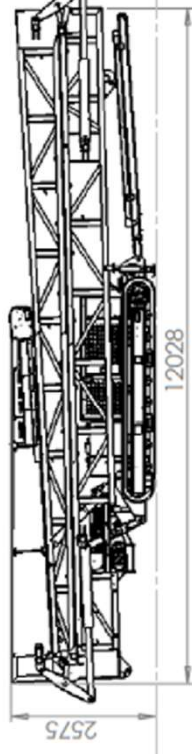
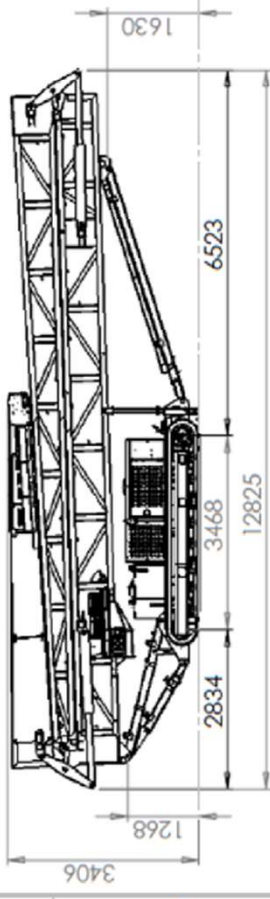
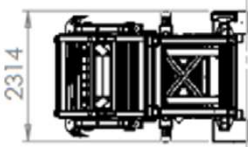
IMS MC1050-30T





Max working mode

Transport mode



Container mode

DO NOT SCALE DRAWING		REVISION	
FINISH		TITLE	
UNLESS OTHERWISE SPECIFIED: DIMENSIONS ARE IN MILLIMETERS DIMENSIONS IN PARENT CORPUSCLES: LINEAR: ANGULAR:		DERRIS AND BEGAS SHARP RODS	
NAME	SIGNATURE	DATE	
DRWN			
CHKD			
APPRD			
MFD			
QA			
MATERIAL:		DWG. NO.	
		IMS-24486	
		MC1050-30T (CAT3.4)	
		SCALE 1:50	
		SHEET 1 OF 1	
		2	
		3	
		4	
		5	
		6	
		7	
		8	



Heavy Duty Construction

Heavy Duty lattice angle construction to give added stability and to withstand the rigours of heavy duty operation.

Conveyor

The conveyor is constructed in 3 sections, the tail section includes a generous feed hopper and the head section includes the conveyor drive, consisting of twin Sauer-Danfoss hydraulic motors coupled to a rubber lagged drive pulley.

Diesel-Hydraulic Power Unit

The conveyor is powered by a Caterpillar 74kw water cooled Diesel Engine coupled to a tandem hydraulic pump giving sufficient oil flow to drive both the conveyor at maximum output and to operate the crawler tracks.

Undercarriage

The undercarriage consists of the hydraulically operated crawler tracks together with an adjustable support trestle arrangement, which allows variation in both feed and discharge heights.

Hydraulic Folding Mechanism

The folding mechanism of the conveyor head and tail sections allow for quick site set up and provides a flexible approach to transport of the unit. The hydraulic folding is designed so that the hydraulic cylinder piston rods are fully protected when the machine is operational.

Emergency Stop System

Every MC1050-30T track Conveyor is equipped from the factory with an emergency stop system that will render the plant inoperable when activated, providing added safety for the operator.





Standard Features

- Crawler Track Movement
- 74 kw Diesel-Hydraulic Drive
- 1050mm (42") wide 3 ply belt
- Hydraulic Folding on Head Section
- Hydraulic Folding of Tail Section
- Hydraulic Raise and Lower



Options

- Heavy Duty Belt
- Chevron Belt
- Feed Impact Bars
- Conveyor Belt Variable Speed Control
- Dual Power: Electric & Diesel / Hydraulic Power Unit
- PVC covers
- Steel skirting full length of conveyor
- Galvanised Steel Covers
- Pull Cord Emergency Stops
- Feedboot Mild Steel Wear Plates
- Feedboot Hardox Wearplates
- Feedboot Extensions
- Radio Remote Control
- 48 Inch Belt Option
- Onboard Genset Image Shown





Specifications

Operational Length	30M (100')
Operational Height	13M (42'8")
Loading Height	1.2M-3.4M (4'0"-11'3")
Hydraulic Tank Capacity	377 l (83 Gallon)
Diesel Fuel Capacity	216 l (48 Gallon)
Engine	Caterpillar
Engine Power	74kw (100HP)
Transport Width	2.25M (7' 4")
Transport Height	2.5M (8' 2")
Transport Length	12.2M (40' 3")
Total Weight	13200 kgs (29040 lbs)



Due to Irish Manufacturing Services Limited's policy of continuing product improvements, Specifications are subject to change without notice or obligation. No representation is made that the products depicted herein comply with any laws, codes, rules, regulations or standards. Compliance is the responsibility of the user. Additional safety equipment may be required by the particular location and application of product.

Irish Manufacturing Services Limited

34 Dunroe Road, Clogher, Co. Tyrone, N. Ireland BT76 0DZ

Tel. +44 (0)28 8554 9656 E-mail info@ims-ltd.ie website;
www.ims-ltd.ie



MC1050-20WR

Wheel Radial Conveyor



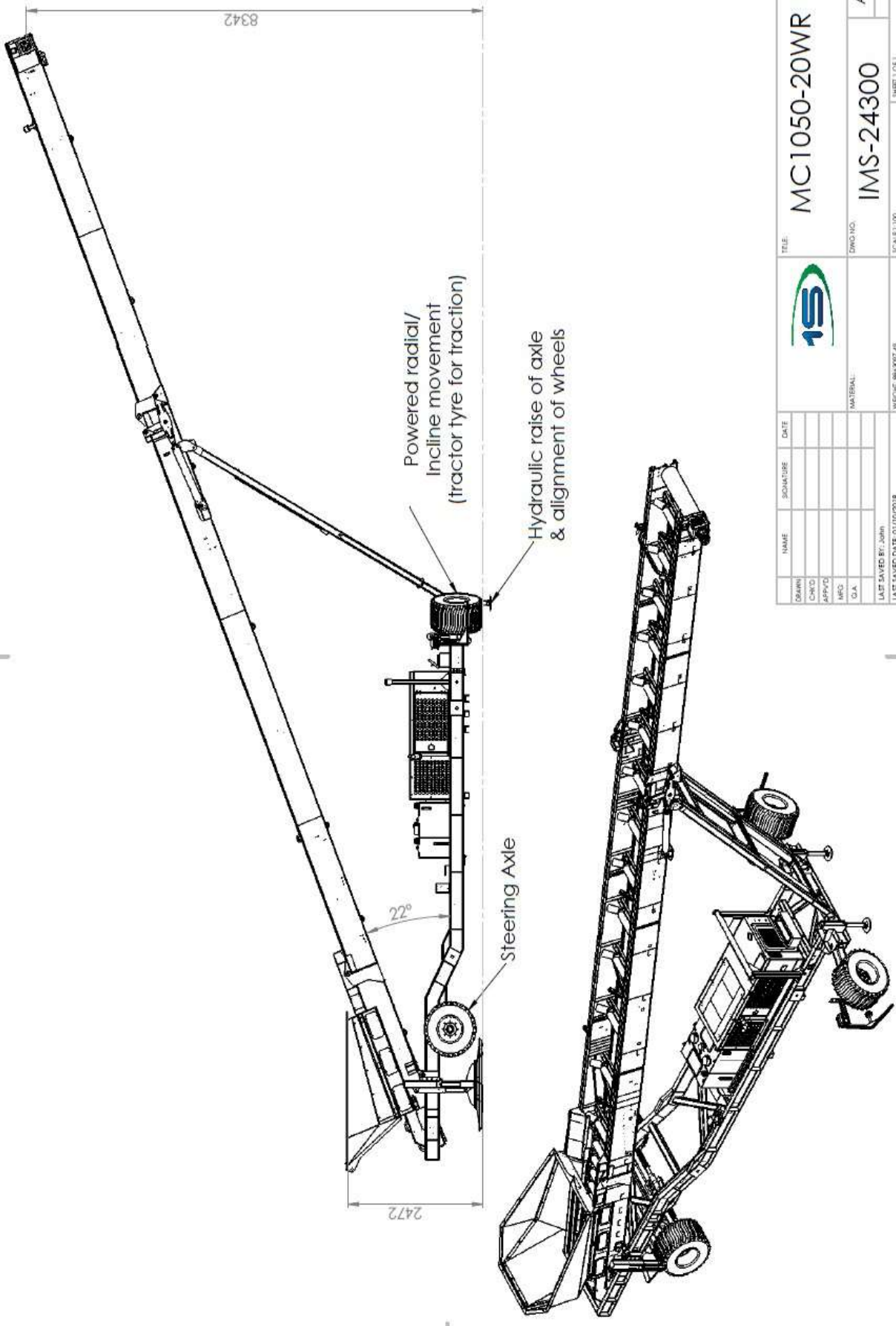
 YouTube


SEARCH

MC1050-20WR



A leading manufacturer of screening and conveyor equipment, offer the MC1050-20WR wheel stacking conveyor, the ideal conveyor for handling wood chip, mulch, and recycled waste timber



		TITLE: MC1050-20WR		DWG NO: IMS-24300		A3	
NAME: _____ SIGNATURE: _____ DATE: _____	NAME: _____ SIGNATURE: _____ DATE: _____	MATERIAL: _____	SCALE: 1:100	SHEET 1 OF 1	WEIGHT: 9843077.49	LAST SAVED BY: John	LAST SAVED DATE: 01/10/2018





Heavy Duty Construction

Constructed from 5mm thick MS plate designed in 500mm deep section to give added stability and to withstand the rigours of heavy duty operation

Conveyor

The conveyor is constructed in 3 sections , the tail section includes a generous feed hopper and the head section includes the conveyor drive , consisting of a Sauer-Danfoss hydraulic motor and rubber lagged drive pulley

Diesel-Hydraulic Power Unit

The conveyor is powered by a 38 kw Diesel Engine coupled to a tandem hydraulic pump giving sufficient oil flow to drive both the conveyor at maximum output and to operate the magnet

Radial Operation

The Radial Operation is facilitated by 2 445/55 x 22.5 Super Single wheels mounted in radial alignment. One of the wheels is driven by a Brevini geared hydraulic motor to provide radial movement. The radial wheels are retracted via hydraulic cylinders to transform the machine to road transport mode

Road Transport

The undercarriage consists of a heavy duty chassis with a TUV approved axle with 385/55 x 22.5 Super Single Wheels, VBG approved Tow Hitch, Braking System and approved 24v Lighting System.

Hydraulic Folding Mechanism

The folding mechanism of the conveyor head section allows for quick site set up and provides a flexible approach to transport of the unit. The hydraulic folding is designed so that the hydraulic cylinder piston rods are fully protected when the machine is operational

Emergency Stop System

Every MC1050-20WR Conveyor is equipped from the factory with an emergency stop system that will render the plant inoperable when activated, providing added safety for the operator



Standard Features

38 kw Diesel-Hydraulic Drive
1050mm (42") wide 3 ply belt
Hydraulic Folding on Head Section
Hydraulic Raise and Lower
Manual Folding of Tail Section

Options

Heavy Duty Belt
Chevron Belt
Conveyor Belt Variable Speed Control
PVC covers
Galvanised Steel Covers
Feedboot Mild Steel Wear Plates
Feedboot
Hardox Wearplates
Feedboot Extensions
Twin Electric Drive
Impact Rollers
Overband Magnet
15m Version (image below)





Specifications

Operational length	20M (65')
Operational height	9.16M (30') At maximum height (26°) chevron belt may be required
Loading height	1.2M (4'0")
Hydraulic tank capacity	320 l (70 gallon)
Diesel fuel capacity	155 l (35 gallon)
Engine	Caterpillar Liquid Cooled
Engine power (horsepower)	38kw (51 HP)
Transport width	2.5 M (8'0")
Transport height	4.0 M (13' 2")
Transport length	14.9M (49'0")
Total weight	12640kgs (27800 lbs)
Axle Weight	9440kgs (20770 lbs)

Due to Irish Manufacturing Services Limited's policy of continuing product improvements, Specifications are subject to change without notice or obligation. No representation is made that the products depicted herein comply with any laws, codes, rules, regulations or standards. Compliance is the responsibility of the user. Additional safety equipment may be required by the particular location and application of product.

Irish Manufacturing Services Limited

34 Dunroe Road, Clogher, Co. Tyrone, N. Ireland BT76 0DZ

Tel. +44 (0)28 8554 9656 E-mail info@ims-ltd.ie website; www.ims-ltd.ie



Wheel Conveyors

IMS offer a wide range of static and wheeled radial conveyors.

For more information contact IMS on contact details provided below.







