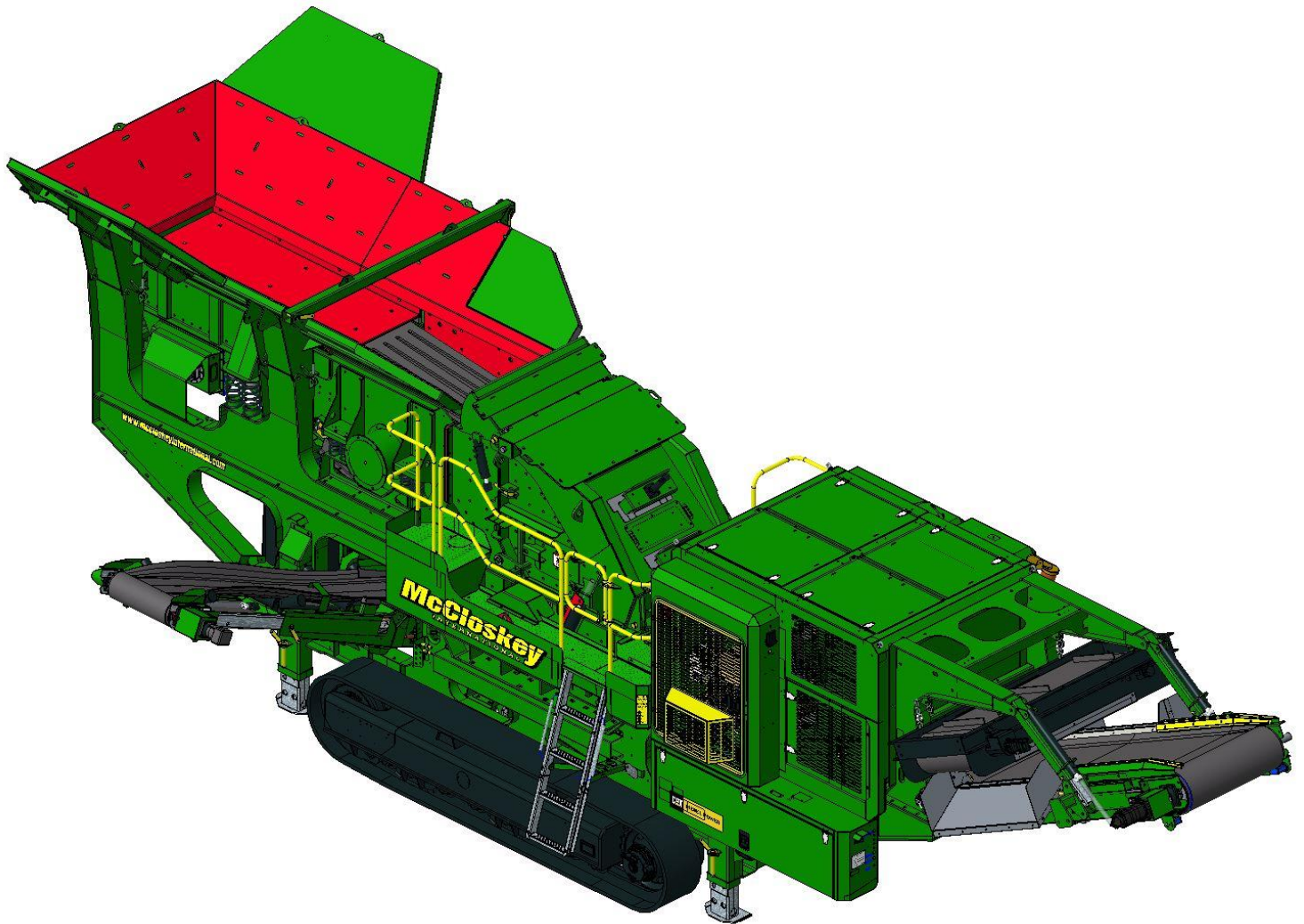
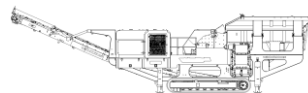


SPECIFICATIONS



McCloskey ***i44v2***

**DESCRIPTION**

Heavy duty track mounted Crusher with following features:

- 1050mm (42") diameter x 1100mm (43") wide Impactor.
- 350Hp Cat C9 engine, 350Hp Cat C9.3 engine, 360Hp Volvo D11.
- Track or Track c/w Wheel bogie.
- Integrated hydraulic folding hopper.
- Integrated hydraulic folding stockpiling conveyors.
- I-beam plate fabricated chassis construction.
- Open chassis design for ease of maintenance
- Fast setup time
- Vibrating feeder under crusher discharge.

DIMENSIONS AND WEIGHTS

Length - transport model	12.932m (42' - 5")
Width - transport all models	2.5m (8' - 2.4")
Height - transport track	3.40m (11' - 2")
Weight – track	37,850 Kgs (84,444 lbs) inc magnet & dirt conveyor
Weight – track	35,000 Kgs (77,160 lbs) basic

CAPACITIES

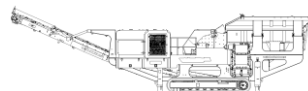
Diesel tank capacity	636 L (168 US gal)
Hydraulic tank capacity	1000 L (264 US Gals)

IMPACTOR CHAMBER

Feed opening WxH	1150 x 800mm, (45.3 x 31.5")
Impactor rotor	1050mm (42") diameter x 1100mm (43.3") wide
Crusher speed	600-740 rpm (33-40 m/sec rotor tip speed)
Number of aprons	2 (3 with optional grinding path)
Number of blowbars	4
Full blowbar weight	217 Kg (478 lbs)
Crusher Drive	Hydraulic – V-Belts
Feed size	450 x 450 x 450mm lump, (18" x 18" x 18")
Impactor weight	11,000kg (24,250 lbs) estimated
Closed side setting adjustment	Hydraulic rams, shim system
Motor	Kawasaki axial piston 280cc/rev
Flow rate	400 Lpm (105 US gpm)
Speed sensor	YES
Load sensor	Hydraulic / Engine load monitoring

PAN FEEDER (STANDARD – NO PRESCREEN)

Feeder width	1080mm (42.5")
Feeder length	4050mm (159.4")
Drive	Hydraulic
Motor	David Brown MCC 2208 58.7cc/rev
Flow rate	60.8 Lpm (16.1 US gpm)
Adjustable speed	Yes – via mechanical Flow Control
Variable speed	Yes – via electrical proportional
Maximum speed	1060rpm

**HOPPER**

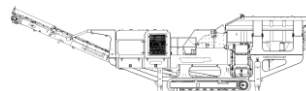
Length overall	4530mm (14' - 10.2")
Width	2222mm (7' - 3.4")
Volume	6.8m ³ (8.9yd ³)
Material	8mm sides + 8mm Hardox liners
Locking system	Wedge type and toggle

SIDE CONVEYOR

Stockpile height	2480mm (8' - 1.6")
Belt width	650mm (26")
Belt spec	EP 400/3 3+1.5
Drive drum dia.	220mm (8.6")
Tail drum dia.	220mm (8.6") - spoked
Motor	OMT400
Flow rate	43.7 Lpm (11.5 US gpm)
Adjustable speed	YES
Maximum speed	109 rpm

MAIN CONVEYOR

Stockpile height	3230mm (10' - 7")
Belt width	1050mm (42")
Belt spec	Plain 500/3 8+2
Drive drum dia.	285mm (11.2")
Tail drum dia.	270mm (10.6") - spoked
Motor	OMV630
Flow rate	87.4 Lpm (23.1 US gpm)
Maximum speed	138.7 rpm
Angle adjustable	OPTION
Quick release	YES



PAN FEEDER (WITH PRESCREEN)

Feeder width (inside wearplates)	1064mm (3' - 6")
Feeder length	2385mm (7' - 10")
Drive	Hydraulic
Motor	David Brown MCC 2208 58.7cc/rev
Flow rate	62.7 Lpm (16.5 US gpm)
Adjustable speed	Yes – via mechanical Flow Control
Variable speed	Yes – via electrical proportional
Maximum speed	1060rpm

GRIZZLY PRE SCREEN

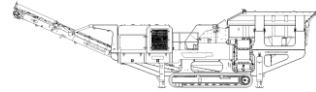
Prescreen width (inside wearplates)	1064mm (3' - 6")
Prescreen length overall	1760mm (5' - 9")
Grizzly section opening	Tapered 35-75mm (1.5" – 3")
Grizzly section length	1500mm (4' - 11")
Bottom deck mesh	2 off 1045mm x 525 (3' - 5" x 1' - 8")
Drive	Hydraulic
Motor	David Brown MCC 2208 58.7cc/rev
Flow rate	62.7 Lpm (16.5 US gpm)
Adjustable speed	NO
Auto stop start system	YES
Maximum speed	1060rpm

PAN FEEDER UNDER IMPACTOR

Width	1210mm (47.6")
length	2200mm (86.6")
Base liners	10mm (3/8") stainless steel
Side liners	10mm (3/8"Hardox 400)
Operating angle	8°
Vibrating motor	Twin out of balance mass
Hydraulic motor	2 off Eaton 32.9cc/rev
Fixed speed	YES
Flow rate	87.4 Lpm (23.1 US gpm)

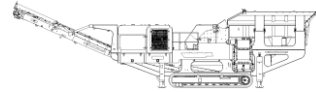
POWERUNIT AND HYDRAULICS

Engine	Tier3 CAT C9 (261 Kw,350 HP) Tier4 CAT C9.3 (261 Kw,350 HP) Tier4 VOLVO D11 (268 Kw 360 HP)
Engine speed	1900 rpm
Flywheel Pump 1 (Crusher/Tracks)	Kawasaki
LH PTO Pump 2 (Feeder/Side conveyor)	Turolla
Front PTO Pump 3 (Main conveyor/Pilots)	Turolla
Total system flow	612.8 Lpm (161.9 US Gpm)
Hydraulic tank capacity	1000 L (264 US Gals)
Hydraulic tank ratio	1.64 : 1
Hydraulic Oil cooler	YES



ELECTRICS

Emergency stops	4 off, 2 feeder, 2 powerunit
Chassis cabling	Armored cable
Start Siren	YES – 10 sec delay
Control panel	Tedd Engineering / IFM
Engine shutdowns:	Low oil pressure
	High water temp
	Air filter blockage (selectable)
	Fuel contamination
	Low hydraulic tank level
	High hydraulic return line filter backpressure
	High hydraulic water filter backpressure
	High hydraulic oil temperature
Radio control tracks and feeder	OPTION
Pendant track control	YES – plugged in control cabinet

**TRACKS**

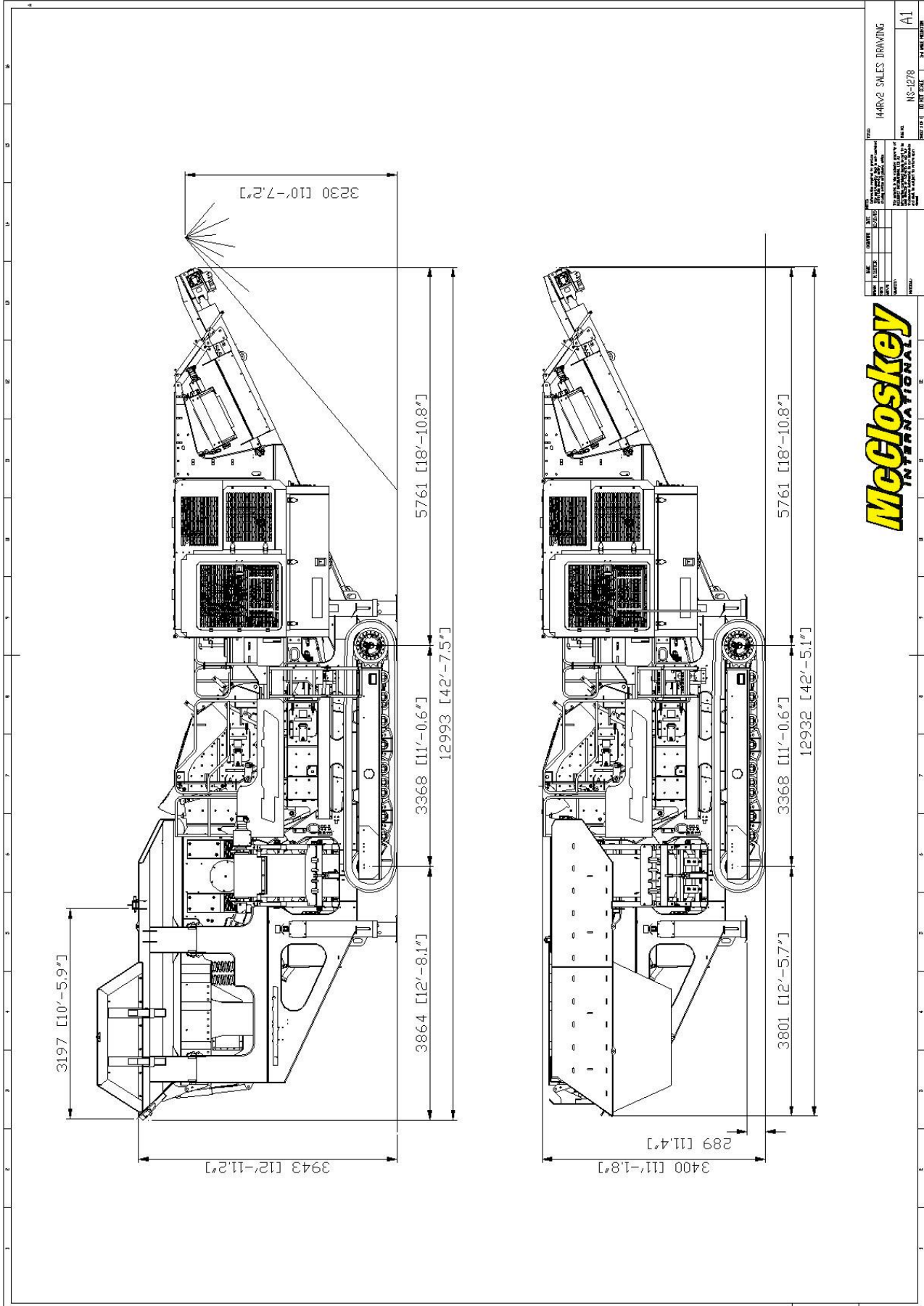
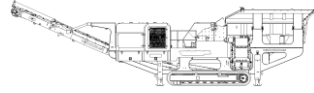
Width	400mm (15.7")
Length	3368mm (11' – 1") crs
Height	817mm (32")
Gearbox	Bonfiglioli 711 (or equivalent)
Ratio	153:1
Motor	Rexroth 90
Speed max	1.50 Kph (0.93 Mph)
Flow rate	138 Lpm (36.45 US gpm)
Multiple speeds	Three speed system selectable at control panel with smooth start / stop.
Attachment to chassis	Bolt On for quick change

OPTIONS

Roll-in bogie system
Main conveyor variable speed control
Hopper Extensions
Overband magnet
Water Pump and dust suppression system
Various blow bar material options
Grinding path
Work lights
Belt Scale
Refueling pump
Recirculation Screen

SAFETY FEATURES

External belt alignment points
External grease points
Engine safety shutdown systems
Full safety guarding for nip points



McCloskey
INTERNATIONAL