



MC 1050-20TF

## FEED TRACK CONVEYOR



 YouTube

**SEARCH**

IMS MC1050-20TF



A leading manufacturer of screening and conveyor equipment, offer the MC1050-20TF Feed tracked stacking conveyor, ensuring regular & consistent feed the MC1050-20TF is the ideal solution for jobs that require high production stockpiling or material transfer



### **Heavy Duty Construction**

Constructed from 5mm thick MS plate designed in 500mm deep section to give added stability and to withstand the rigours of heavy duty operation.

### **Feed Hopper**

8 cubic metre capacity feed hopper with 4.5m wide target area to accept most loaders. Hopper lined with 6mm MS wear plates.

1050mm wide belt feeder with impact rollers, heavy duty belt and variable speed control.

### **Discharge Conveyor**

The conveyor is constructed in 3 sections, the tail section includes a standard reception hopper and the head section includes the conveyor drive, consisting of 2 Sauer-Danfoss hydraulic motors and rubber lagged drive pulley. The belt width is 1050mm and the overall length of the discharge conveyor is 20m.

### **Diesel-Hydraulic Power**

The conveyor is powered by a 74 kw Diesel Engine coupled to a triple hydraulic pump giving sufficient oil flow to drive the variable speed belt feeder, the main discharge conveyor and the crawler tracks.

### **Undercarriage**

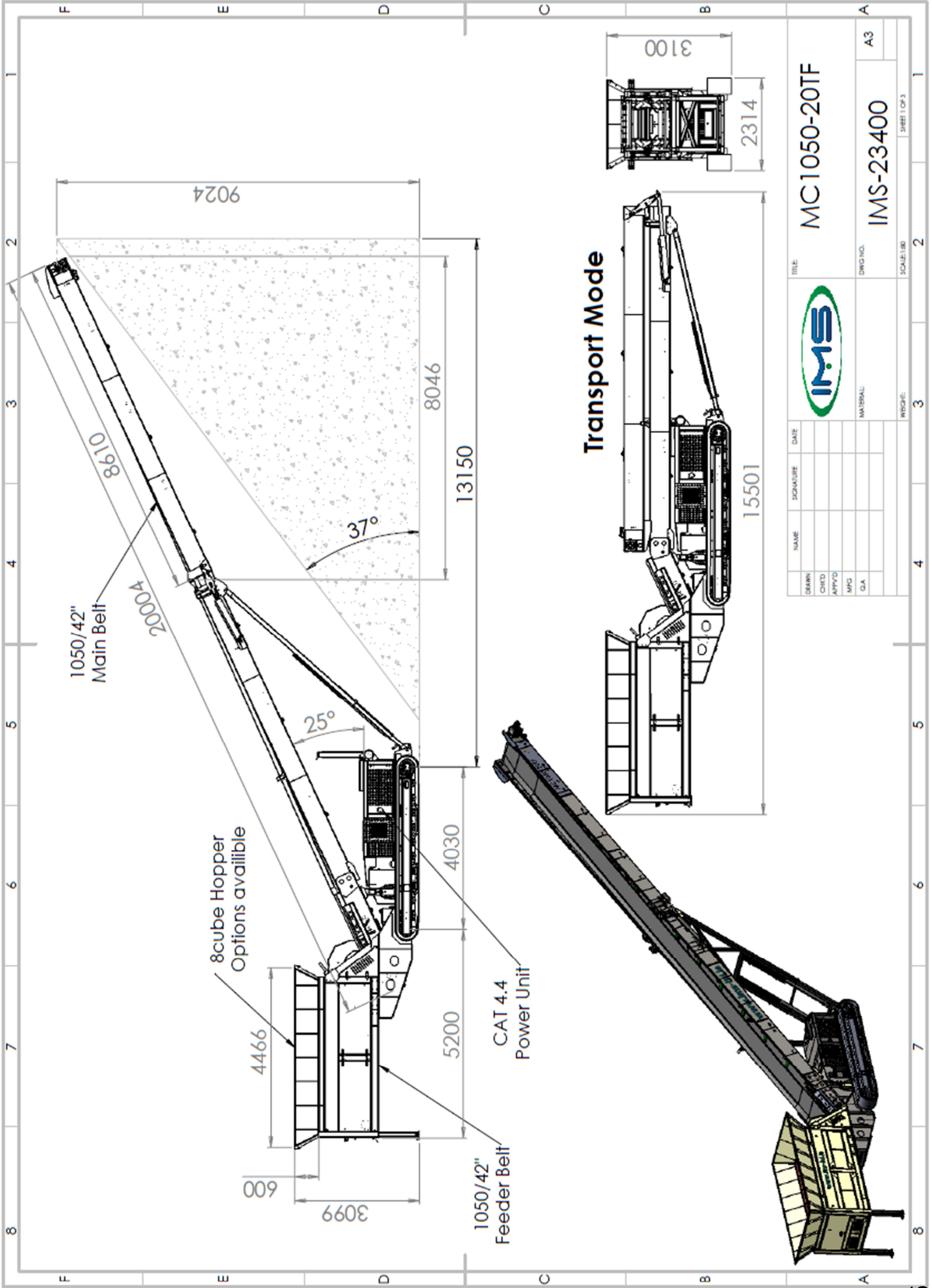
The undercarriage consists of the hydraulically operated crawler tracks together with an adjustable support trestle arrangement, which allows variation in both feed and discharge heights

### **Hydraulic Folding Mechanism**

The folding mechanism of the conveyor head section allows for quick site set up and provides a flexible approach to transport of the unit. The hydraulic folding is designed so that the hydraulic cylinder piston rods are fully protected when the machine is operational

### **Emergency Stop System**

Every MC1050-20TF track Conveyor is equipped from the factory with an emergency stop system that will render the plant inoperable when activated, providing added safety for the operator.



MC1050-20TF



NAME	SIGNATURE	DATE

IMS-23400

DRAWN	CHECKED	APPROVED	DATE

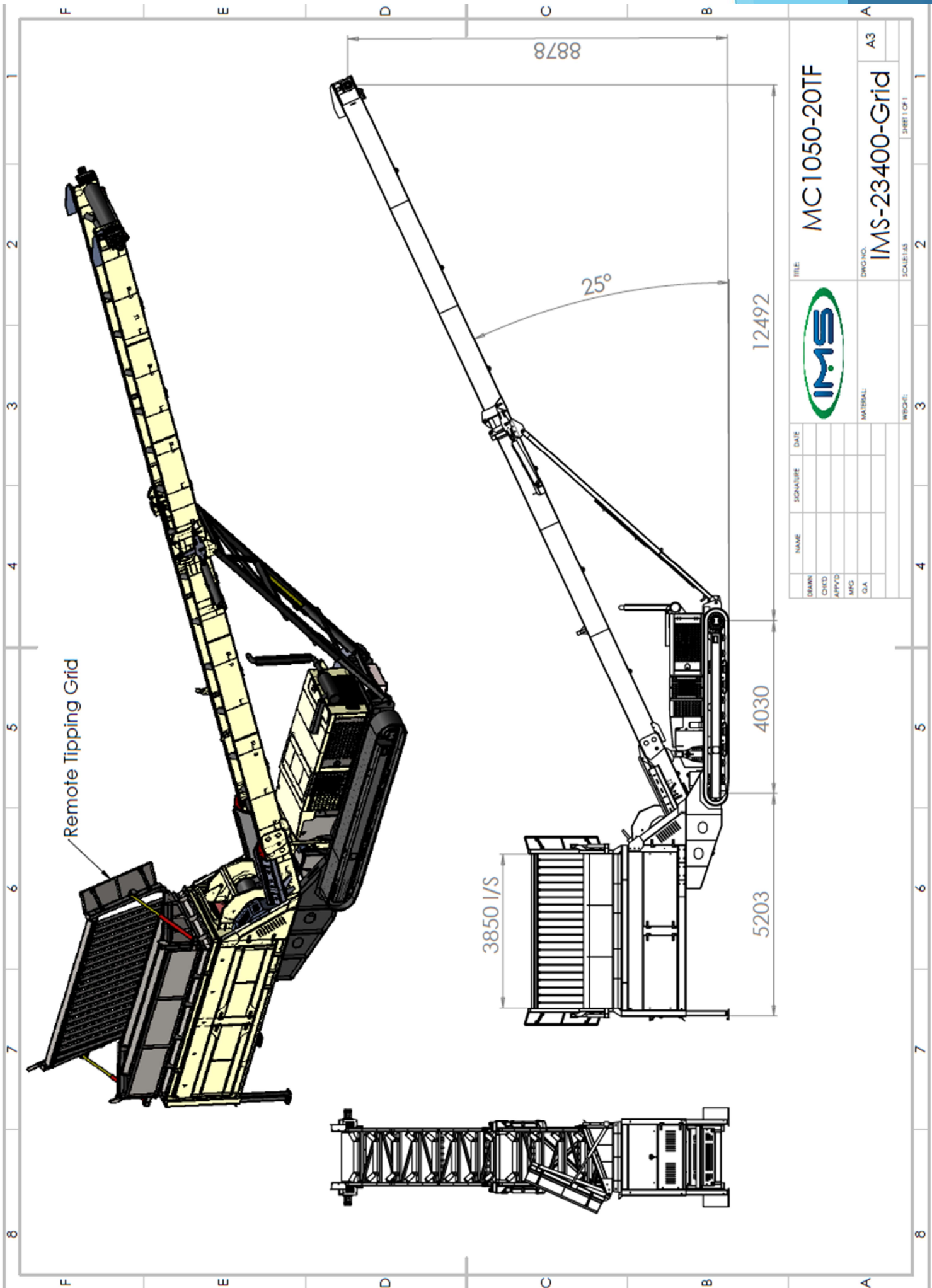
SCALE: 1:80

WEIGHT: 2

SHEET 1 OF 3

A3

1



TITLE: MC1050-20TF

NAME	SIGNATURE	DATE

DWG NO. IMS-23400-Grid  
 A3  
 SCALE: AS SHOWN  
 SHEET 1 OF 1

DRAWN	CHECKED	APPROVED	MFG	QA

NAME	SIGNATURE	DATE

SCALE	AS SHOWN

WSCALE	AS SHOWN

SHEET	1



## Standard Features

Detachable Hopper to allow for container transport –  
Hopper in 20' Container, Conveyor in 40' Container

Extended foldable head section to give additional reach from tracks  
13m from front of tracks to discharge point

1050mm (42") wide Feeder and Main Belt

127mm (5") Impact Rollers under Feeder

Mild Steel Replaceable Liner Plates in Hopper as standard

Helmet Door on front of Hopper to regulate flow of material

8 cubic metre capacity Hopper

Cartridge type Feeder – Can be removed easily for maintenance

User friendly hydraulic inclination (no pins required)

Crawler Track Movement

74 kw Diesel-Hydraulic Drive

1050mm (42") wide 3 ply belt in both Feeder and Discharge Conveyor

Hydraulic Folding on Head Section

Hydraulic Raise and Lower

## Specifications

Operational Length	23.5M (77')
Operational Height	9.03M (30")
Loading Height	3.1M (10")
Hydraulic Tank Capacity	600 l (132 Gallon)
Diesel Fuel Capacity	275 l (61 Gallon)
Engine	Caterpillar Liquid Cooled
Engine Power	74kw (100HP)
Transport Width	2.314M (7' 8")
Transport Height	3.10M (10')
Transport Length	15.5M (51')
Total Weight	17000 kgs (37400 lbs)



## Options

Remote Control Hydraulic Tipping Grid

Hardox 400 Wear Liners In Hopper

Rear Low Loading Hopper

Shredder on discharge from Feeder

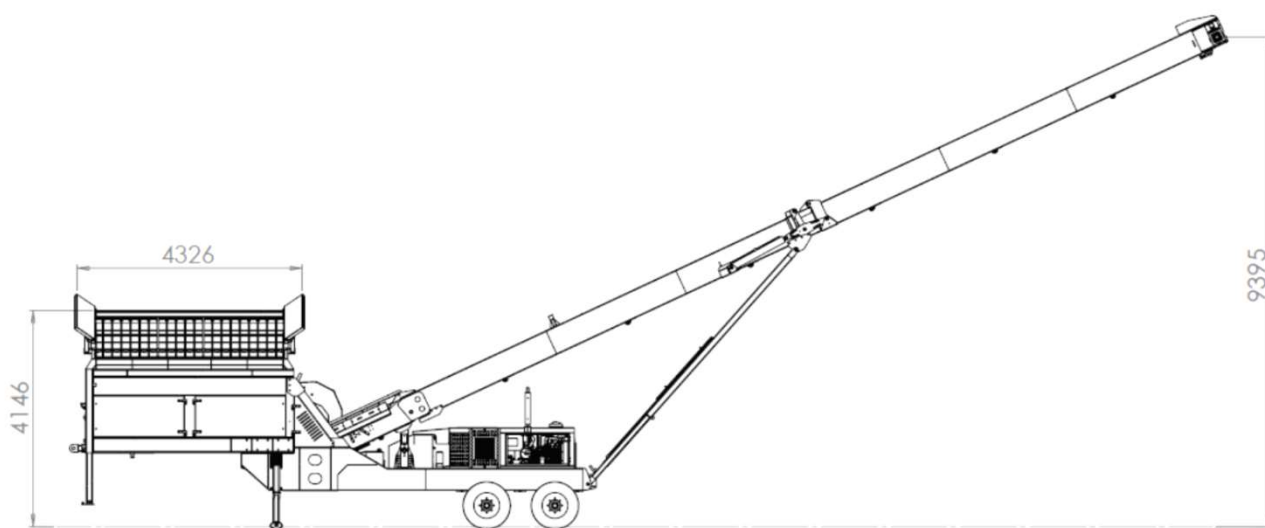
Heavy Duty Belt On Discharge Conveyor

Chevron Belt On Discharge Conveyor

Dual Power: Electric & Diesel / Hydraulic Power Unit

PVC Covers

Wheeled Version MC1050-20WF (Drawing below) includes road braking system to suit region



*Due to Irish Manufacturing Services Limited's policy of continuing product improvements, Specifications are subject to change without notice or obligation. No representation is made that the products depicted herein comply with any laws, codes, rules, regulations or standards. Compliance is the responsibility of the user. Additional safety equipment may be required by the particular location and application of product.*

**Irish Manufacturing Services Limited**

34 Dunroe Road, Clogher, Co. Tyrone, N. Ireland BT76 0DZ

Tel. +44 (0)28 8554 9656 E-mail [info@ims-ltd.ie](mailto:info@ims-ltd.ie) website; [www.ims-ltd.ie](http://www.ims-ltd.ie)



## MC 1050-14TF FEED TRACK CONVEYOR



A leading manufacturer of screening and conveyor equipment, offer the MC1050-14TF Feed tracked stacking conveyor, ensuring regular & consistent feed the MC1050-14TF is the ideal solution for jobs that require high production stockpiling or material transfer



### **Heavy Duty Construction**

Constructed from 5mm thick MS plate designed in 500mm deep section to give added stability and to withstand the rigours of heavy duty operation.

### **Feed Hopper**

8 cubic metre capacity feed hopper with 4.5m wide target area to accept most loaders. Hopper lined with 6mm MS wear plates.

1050mm wide variable speed belt feeder c/w impact rollers and mild steel wearplates.

### **Discharge Conveyor**

The conveyor is constructed in 3 sections, the tail section includes a standard reception hopper and the head section includes the conveyor drive, consisting of a hydraulic motor and rubber lagged drive pulley. The belt width is 1050mm and the overall length of the discharge conveyor is 14.5m.

### **Diesel-Hydraulic Power**

The conveyor is powered by a 44 kw Diesel Engine coupled to a triple hydraulic pump giving sufficient oil flow to drive the variable speed belt feeder, the main discharge conveyor and the crawler tracks.

### **Undercarriage**

The undercarriage consists of the hydraulically operated crawler tracks together with an adjustable support trestle arrangement, which allows variation in both feed and discharge heights

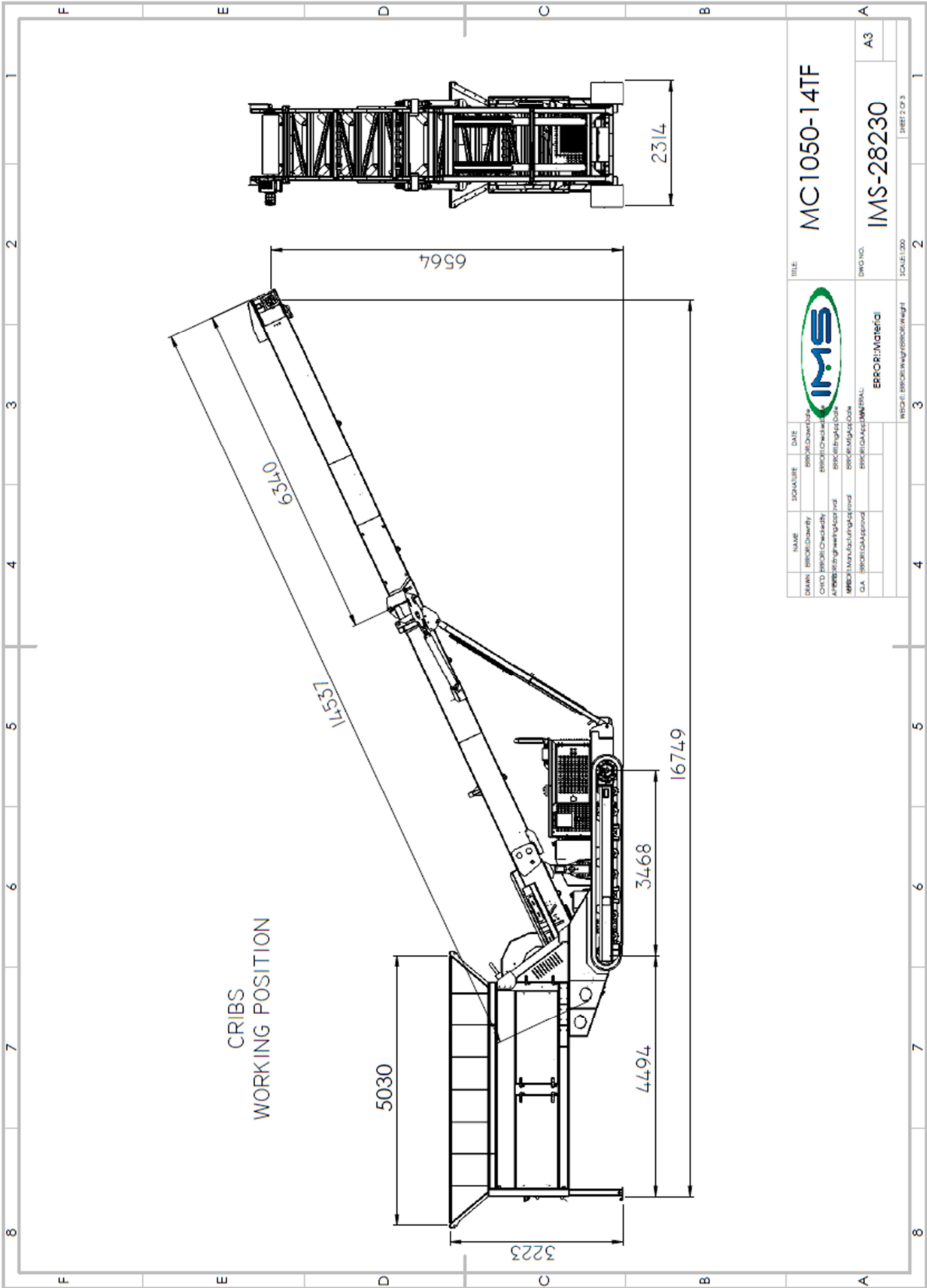
### **Hydraulic Folding Mechanism**

The folding mechanism of the conveyor head section allows for quick site set up and provides a flexible approach to transport of the unit. The hydraulic folding is designed so that the hydraulic cylinder piston rods are fully protected when the machine is operational

### **Emergency Stop System**

Every MC1050-14TF track Conveyor is equipped from the factory with an emergency stop system that will render the plant inoperable when activated, providing added safety for the operator.





TITLE: MC1050-14TF



NAME	SIGNATURE	DATE
DESIGN	DESIGNED BY	DESIGNED DATE
CHKD	CHKD BY	CHKD DATE
APP'D	APP'D BY	APP'D DATE
MFG	MFG BY	MFG DATE
QA	QA BY	QA DATE

DWG NO. IMS-28230

A3

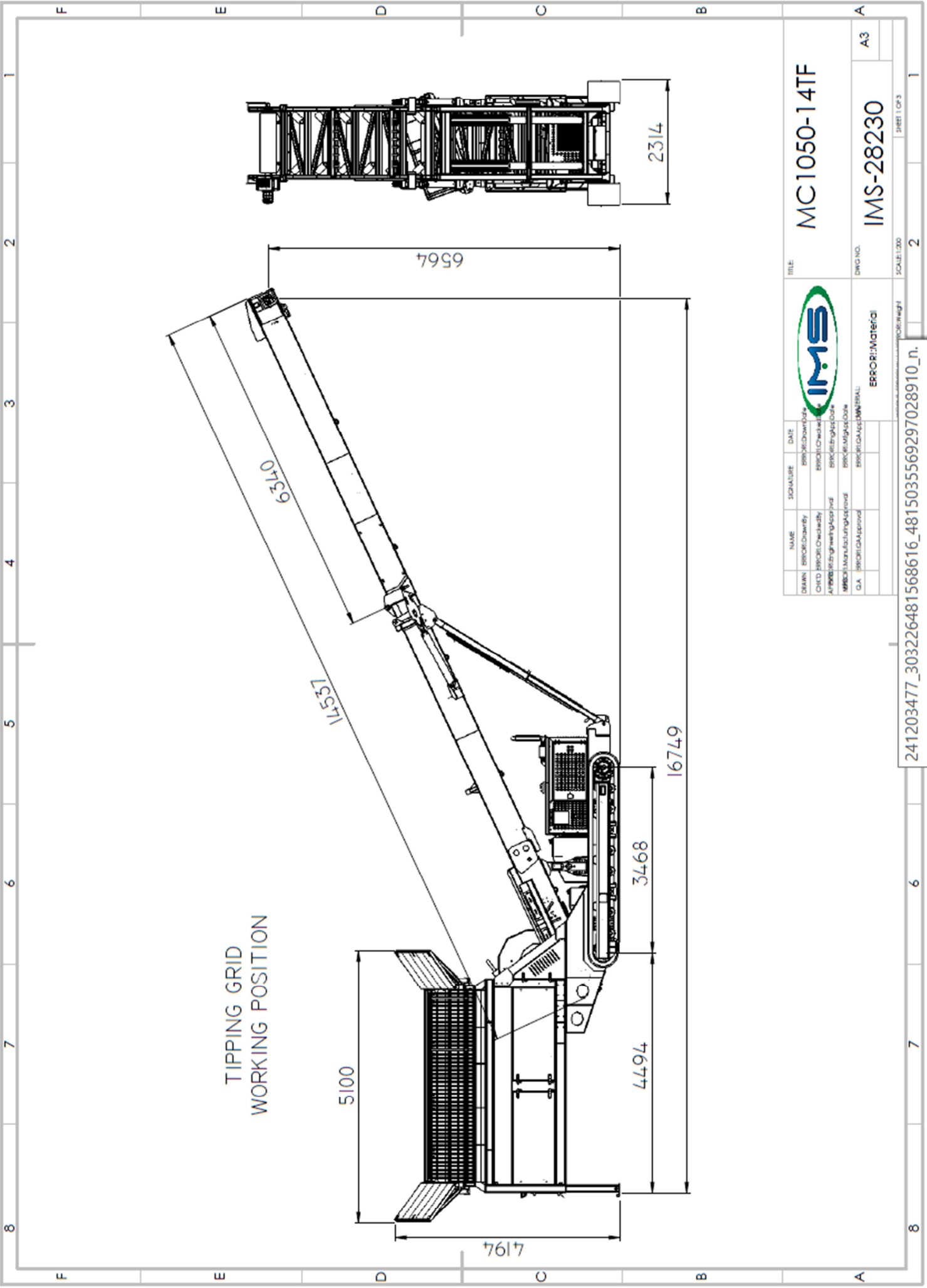
ERROR: Material

SCALE: 1:300

WEIGHT: 16749kg

SHEET 2 OF 3

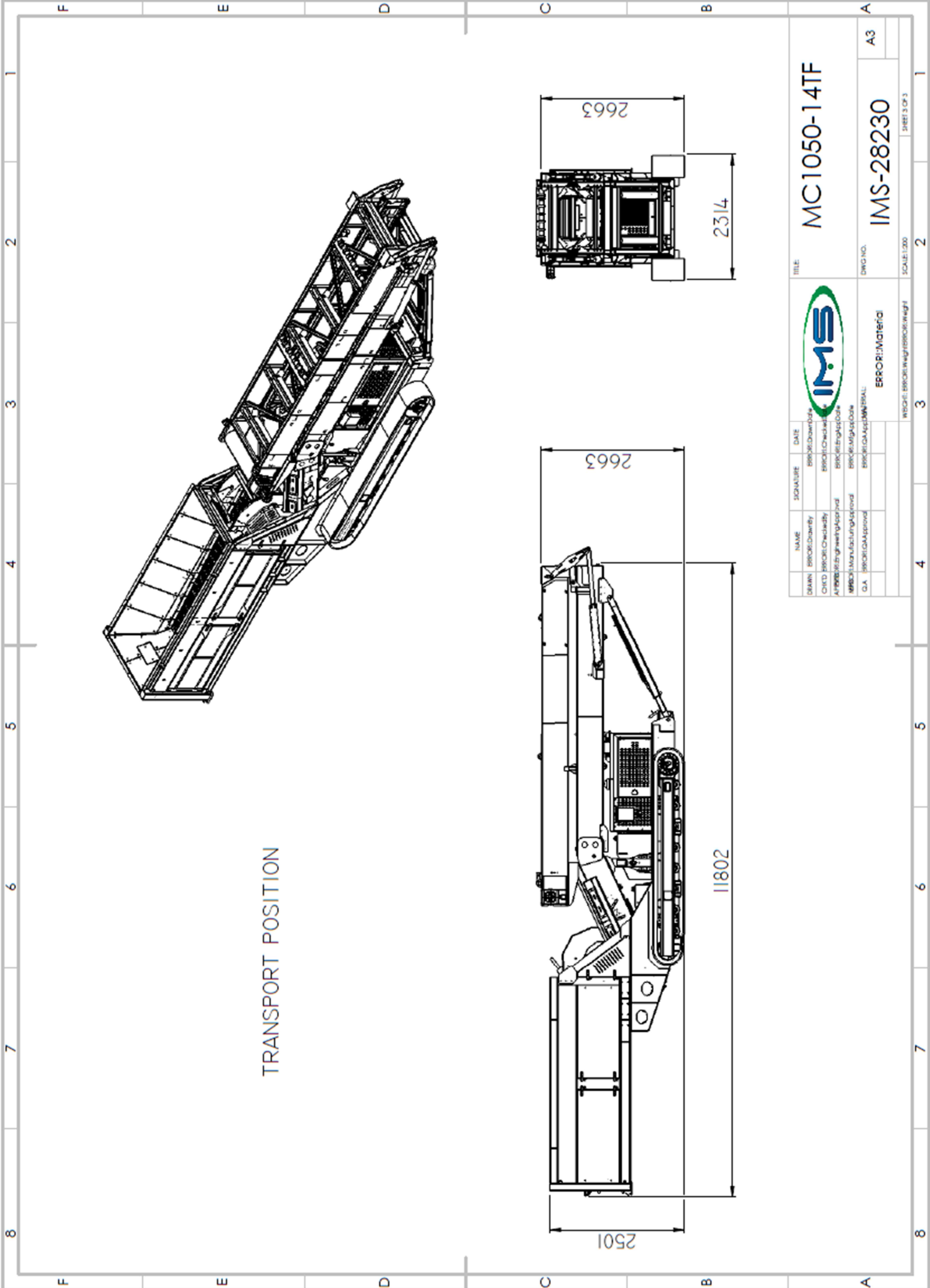
1 2 3 4 5 6 7 8



TIPPING GRID  
WORKING POSITION

DRAWN: [Signature]		DATE: [Date]	TITLE: MC1050-14TF
CHECKED: [Signature]	APPROVED: [Signature]	PROJECT NO.: IMS-28230	SHEET NO.: 2
MANUFACTURING APPROVAL: [Signature]	QA: [Signature]	PROJECT APPROVAL: [Signature]	SCALE: 1:200
ERROR: Material			A3
241203477_303226481568616_4815035569297028910_n.			SHEET 1 OF 3

241203477\_303226481568616\_4815035569297028910\_n.  
img - Photos



TRANSPORT POSITION

NAME		SIGNATURE		DATE	
DRAWN	ERR:CR:Chawib			ERR:CR:Chawib	
CHKD	ERR:CR:Chawib			ERR:CR:Chawib	
APPD	ERR:CR:Chawib			ERR:CR:Chawib	
ERR:CR:Manufacturing Approval				ERR:CR:Manufacturing Approval	
Q.A.	ERR:CR:Approval			ERR:CR:Approval	

		<b>MC1050-14TF</b>	
<b>ERR:CR:Material</b>		<b>IMS-28230</b>	
<b>ERR:CR:Material</b>		<b>A3</b>	

TITLE:		SCALE: 1:200	
WEIGHT: ERR:CR:Weight/ERR:CR:Weight		SHEET 3 OF 3	



## Standard Features

- Suitable for container transportation
- 1050mm (42") wide Feeder and Main Belt
- 127mm (5") Impact Rollers under Feeder
- Mild Steel Replaceable Liner Plates in Hopper as standard
- Helmet Door on front of Hopper to regulate flow of material
- 8 cubic metre capacity Hopper
- Cartridge type Feeder – Can be removed easily for maintenance
- User friendly hydraulic inclination (no pins required)
- Crawler Track Movement
- 44 kw Diesel-Hydraulic Drive
- 1050mm (42") wide 3 ply belt in both Feeder and Discharge Conveyor
- Hydraulic Folding on Head Section
- Hydraulic Raise and Lower

## Specifications

Operational Length	14.142M (60')
Operational Height	6.6M (21' 7")
Loading Height	3.1M (10')
Hydraulic Tank Capacity	600 l (132 Gallon)
Diesel Fuel Capacity	275 l (61 Gallon)
Engine	Caterpillar Liquid Cooled
Engine Power	44kw (59HP)
Transport Width	2.314M (7' 8")
Transport Height	2.66M (8' 9")
Transport Length	11.8M (38' 9")
Total Weight	15000 kgs (33069 lbs)



## Options

Remote Control Hydraulic Tipping Grid

Hardox 400 Wear Liners In Hopper

Rear Low Loading Hopper

Shredder on discharge from Feeder

Heavy Duty Belt On Discharge Conveyor

Chevron Belt On Discharge Conveyor

Dual Power: Electric & Diesel / Hydraulic Power Unit

PVC Covers

Hopper Extensions 5m Loading Area

PLC Controlled Feeder to inference with Pugmill or mixing plant

Remote Stop Start

Remote Tracking



*Due to Irish Manufacturing Services Limited's policy of continuing product improvements, Specifications are subject to change without notice or obligation. No representation is made that the products depicted herein comply with any laws, codes, rules, regulations or standards. Compliance is the responsibility of the user. Additional safety equipment may be required by the particular location and application of product.*

**Irish Manufacturing Services Limited**

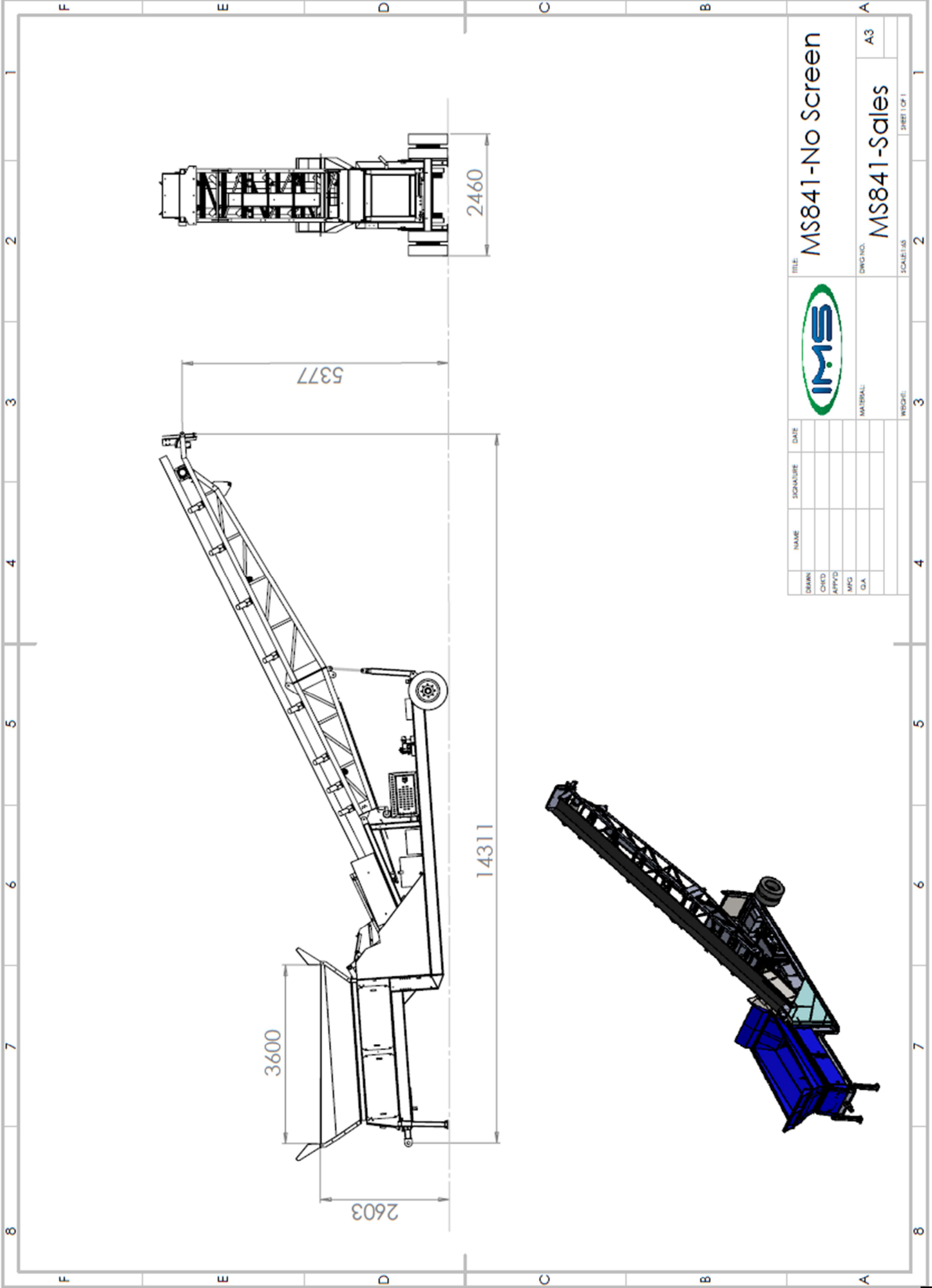
**34 Dunroe Road, Clogher, Co. Tyrone, N. Ireland BT76 0DZ**

**Tel. +44 (0)28 8554 9656 E-mail [info@ims-ltd.ie](mailto:info@ims-ltd.ie) website; [www.ims-ltd.ie](http://www.ims-ltd.ie)**



MH750-11WF  
FEED WHEEL CONVEYOR





TITLE: MS841-No Screen  
 DWG NO.: MS841-Sales  
 A3



NAME	SIGNATURE	DATE

DRAWN	CHECKED	APPROVED	DATE

MATERIAL	WEIGHT	SCALE	SHEET NO.	TOTAL SHEETS



### Features and Benefits

7 Yd (5.3M) Hopper with Variable Speed Belt Feeder and Remote Tipping Grid

Maximum Feed Size 6"

Diesel Hydraulic Drive to latest emission standards

Alternative Electric Hydraulic Drive

Fifth Wheel Towing with transport wheels and axle

Site Towbar for localized movement with site equipment



### Specification.

Total Weight:	18750lbs (8500kgs)
Working Length:	46'11" (14.311m)
Working Width:	8'1" (2.460m)
Working Height:	19' 8" (6.00m)
Diesel Power:	50HP (37KW) Tier 4F (USA) /Tier 5 (Europe)
Electric Power:	50HP (37KW)







### **Hopper and Grid**

Capacity 7 cu yd. (5.3cu M)  
Remote Control Tipping Grid  
Grid Spacing 4" (100mm), 5" (125mm), 6" (150mm)  
Single Bar Grid for easy replacement  
Feed In Height 10'6" (3.2m)  
Target Area 12'3" x 6'0" ( 3.7m x 1.8m)

### **Belt Feeder**

30" (750mm) 2 ply plain belt  
Danfoss Direct Drive Hydraulic Motor  
Variable Speed Control

### **Main Conveyor**

30" (750mm) 2 ply plain belt  
Danfoss Direct Drive Hydraulic Motor  
Manual

### **Screenbox**

8' x 4' (2500mm x 1250mm) Incline Double Deck 4 bearing screen  
End Tensioned Meshes  
Manual Screen Tensioning  
Manual Screen Angle Adjustment

### **Power Unit**

50HP (37KW) Diesel Engine (Tier 4F (USA) / Tier 5 (EC)  
Fuel Tank 35 gallon (160 litres)  
Hydraulic Tank 50 gallon (220 litres)  
Tandem 2PL 070 Hydraulic Pump

### **Axle and Wheels**

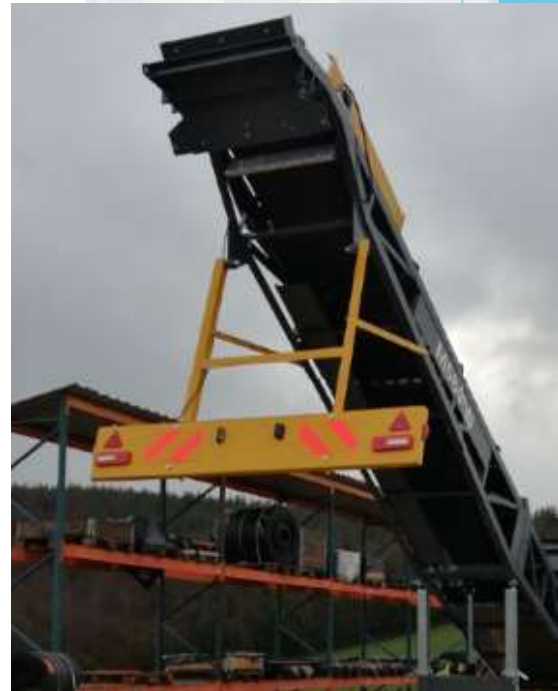
Single Axle non-braked with Twin 7.50 x 8 stud Wheels





## Options

- Electric Hydraulic Powerpack
- Single Shaft Shredder with hammers or flails
- Braked Axle
- Light Board
- Magnet
- Anti Rollback Brackets
- Chevron Belt



*Due to Irish Manufacturing Services Limited's policy of continuing product improvements, Specifications are subject to change without notice or obligation. No representation is made that the products depicted herein comply with any laws, codes, rules, regulations or standards. Compliance is the responsibility of the user. Additional safety equipment may be required by the particular location and application of product.*

**Irish Manufacturing Services Limited**  
34a Dunroe Road, Clogher, Co. Tyrone, N. Ireland BT76 0DZ  
Tel. +44 (0)28 8554 9656 E-mail [info@ims-ltd.ie](mailto:info@ims-ltd.ie) website; [www.ims-ltd.ie](http://www.ims-ltd.ie)



MC 1050-20T

65ft TRACK CONVEYOR

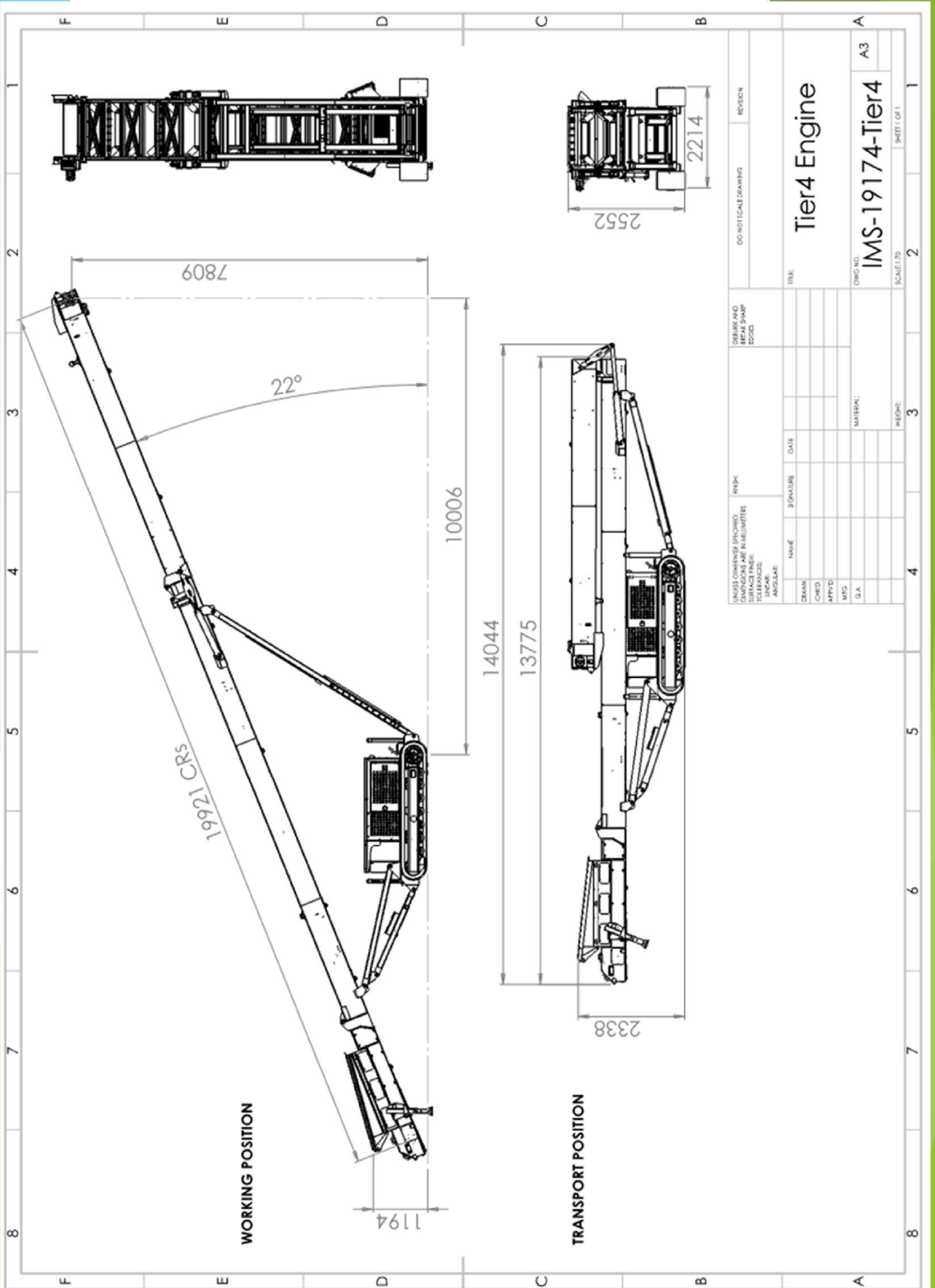
42 INCH BELT



 **YouTube**

**SEARCH**

IMS MC1050-20T 



UNLESS OTHERWISE SPECIFIED, DIMENSIONS ARE IN MILLIMETERS		DO NOT SCALE DRAWING		REVISION	
TOLERANCES:		DIMENSIONS AND SURFACE FINISHES:		TIER 4 ENGINE	
LINEAR:	ANGULAR:	FORMS AND EDGES:	TITLE:		
NAME:	SIGNATURE:	DATE:	IMS-19174-Tier4		
DESIGN:	CHKD:	APPVD:	DWG NO. A3		
MFG:	G.A.:	MATERIAL:	SCALE: 1:2		
REGD:		SHEET 1 OF 1		2	



### **Heavy Duty Construction**

Constructed from 5mm thick MS plate designed in 500mm (20") deep section to give added stability and to withstand the rigours of heavy duty operation

### **Conveyor**

The conveyor is constructed in 3 sections , the tail section includes a generous feed hopper and the head section includes the conveyor drive , consisting of a Sauer-Danfoss hydraulic motor and rubber lagged drive pulley

### **Diesel-Hydraulic Power Unit**

The conveyor is powered by a 38 kw Diesel Engine coupled to a tandem hydraulic pump giving sufficient oil flow to drive both the conveyor at maximum output and to operate the crawler tracks

### **Undercarriage**

The undercarriage consists of the hydraulically operated crawler tracks together with an adjustable support trestle arrangement, which allows variation in both feed and discharge heights

### **Hydraulic Folding Mechanism**

The folding mechanism of the conveyor head section allows for quick site set up and provides a flexible approach to transport of the unit. The hydraulic folding is designed so that the hydraulic cylinder piston rods are fully protected when the machine is operational

### **Emergency Stop System**

Every MC1050-20T track Conveyor is equipped from the factory with an emergency stop system that will render the plant inoperable when activated, providing added safety for the operator.



### **Standard Features**

- Crawler Track Movement
- 38kw Diesel-Hydraulic Drive
- 1050mm (42") wide 3 ply belt
- Hydraulic Folding on Head Section
- Hydraulic Raise and Lower
- Manual Folding of Tail Section



### **Options**

- Hydraulic Folding of Tail Section
- Heavy Duty Belt
- Chevron Belt
- Dual Hydraulic Drive for increased throughput
- Feed Impact Bars
- Conveyor Belt Variable Speed Control
- Dual Power: Electric & Diesel / Hydraulic Power Unit
- PVC covers
- Galvanised Steel Covers
- Pull Cord Emergency Stops
- Feedboot Mild Steel Wear Plates
- Feedboot Hardox Wearplates
- Feedboot Extensions
- Radio Remote Control
- 48" Belt Verion



## Specifications

Operational Length	20M (65')
Operational Height	8.06M (26' 6")
Loading Height	1.2M-3.4M (4'0"-11'3")
Hydraulic Tank Capacity	320 l (70 gallon)
Diesel Fuel Capacity	155 l (35 gallon)
Engine	Caterpillar
Engine Power	38 kw (51 HP)
Transport Width	2.25M (7' 4")
Transport Height	2.5M (8' 2")
Transport Length	10.7M (35' 10")
Total Weight	9560 kgs (21030 lbs)



*Due to Irish Manufacturing Services Limited's policy of continuing product improvements, Specifications are subject to change without notice or obligation. No representation is made that the products depicted herein comply with any laws, codes, rules, regulations or standards. Compliance is the responsibility of the user. Additional safety equipment may be required by the particular location and application of product.*

**Irish Manufacturing Services Limited**

34 Dunroe Road, Clogher, Co. Tyrone, N. Ireland BT76 0DZ

Tel. +44 (0)28 8554 9656 E-mail [info@ims-ltd.ie](mailto:info@ims-ltd.ie) website; [www.ims-ltd.ie](http://www.ims-ltd.ie)



MC 1050-24T

80ft TRACK CONVEYOR

42 INCH BELT



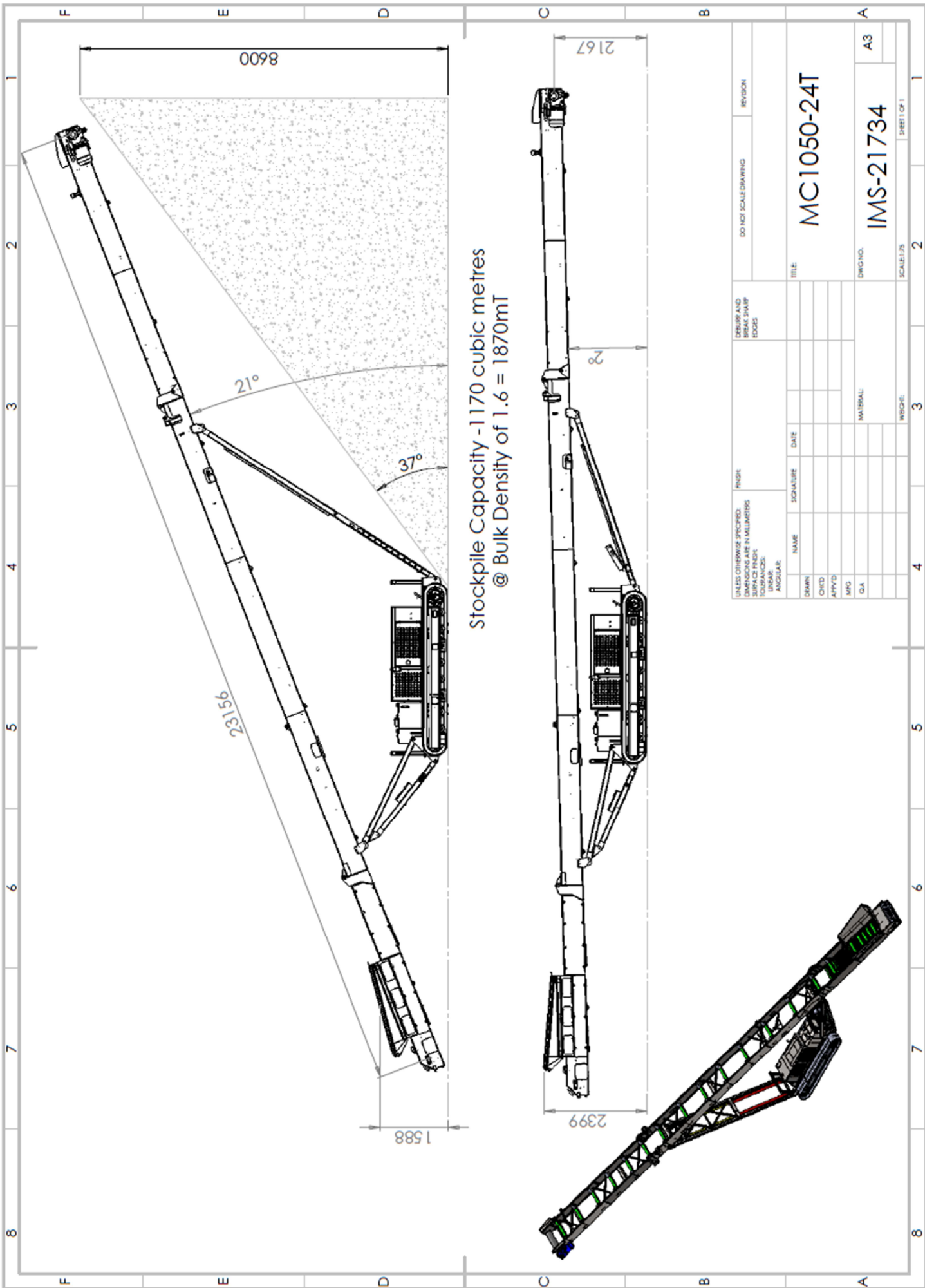
 YouTube

**SEARCH**

IMS MC1050-24T







Stockpile Capacity - 1170 cubic metres  
 @ Bulk Density of 1.6 = 1870mT

DIMENSIONS SPECIFIED: DIMENSIONS ARE IN MILLIMETERS SURFACE FINISH: FINISH: TOLERANCES: ANGULAR:		FINISH: FINISH: FINISH: FINISH:		DO NOT SCALE DRAWING REVISION:	
DRAWN: CHECKED: APPROVED: MFG: QA:	NAME: NAME: NAME: NAME:	SIGNATURE: SIGNATURE: SIGNATURE: SIGNATURE:	DATE: DATE: DATE: DATE:	TITLE: <b>MC1050-24T</b>	
MATERIAL:				DWG. NO.: <b>IMS-21734</b>	
SCALE:				SCALE:	
SHEET OF 1				SHEET OF 1	



### **Heavy Duty Construction**

Constructed from 5mm thick MS plate designed in 500mm deep section to give added stability and to withstand the rigours of heavy duty operation.

### **Conveyor**

The conveyor is constructed in 3 sections , the tail section includes a generous feed hopper and the head section includes the conveyor drive, consisting of a Sauer-Danfoss hydraulic motor and rubber lagged drive pulley.

### **Diesel-Hydraulic Power Unit**

The conveyor is powered by a 55 kw Diesel Engine coupled to a tandem hydraulic pump giving sufficient oil flow to drive both the conveyor at maximum output and to operate the crawler tracks.

### **Undercarriage**

The undercarriage consists of the hydraulically operated crawler tracks together with an adjustable support trestle arrangement, which allows variation in both feed and discharge heights.

### **Hydraulic Folding Mechanism**

The folding mechanism of the conveyor head section and tail sections allows for quick site set up and provides a flexible approach to transport of the unit. The hydraulic folding is designed so that the hydraulic cylinder piston rods are fully protected when the machine is operational.

### **Emergency Stop System**

Every MC1050-24T Track Conveyor is equipped from the factory with an emergency stop system that will render the plant inoperable when activated, providing added safety for the operator.



## **Standard Features**

- Crawler Track Movement
- 55 kw Diesel-Hydraulic Drive
- 1050mm (42") wide 3 ply belt
- Hydraulic Folding on Head Section
- Hydraulic Folding of Tail Section
- Hydraulic Raise and Lower
- Single Hydraulic Motor Drive (Sauer-Danfoss)

## **Options**

- Heavy Duty Belt
- Conveyor Belt Variable Speed Control
- Dual Hydraulic Drive For Increased Throughput
- Feed Impact Bars
- Galvanised Steel Covers
- Dual Power: Electric & Diesel/Hydraulic Power Unit
- PVC Covers
- Feedboot Hardox Wareplates
- Pull Cord Emergency Stops
- Feedboot Mild Steel Wear Plates
- 15 Tonne Capacity Hopper
- Feedboot Extensions
- Radio Remote Control
- Remote Variable Speed Belt Speed Control



## Specifications

Operational Length	24M (79')
Operational Height	9.02M (29'7")
Loading Height	1.48M-2.46M (4'9"-8'3")
Hydraulic Tank Capacity	377 l (83 Gallon)
Diesel Fuel Capacity	216 l (48 Gallon)
Engine	Caterpillar
Engine Power	55kw (74HP)
Transport Width	2.25M (7' 4")
Transport Height	2.5M (8' 2")
Transport Length	12.2M (40' 3")
Total Weight	11470 kgs (25234 lbs)



*Due to Irish Manufacturing Services Limited's policy of continuing product improvements, Specifications are subject to change without notice or obligation. No representation is made that the products depicted herein comply with any laws, codes, rules, regulations or standards. Compliance is the responsibility of the user. Additional safety equipment may be required by the particular location and application of product.*

**Irish Manufacturing Services Limited**

34 Dunroe Road, Clogher, Co. Tyrone, N. Ireland BT76 0DZ

Tel. +44 (0)28 8554 9656 E-mail [info@ims-ltd.ie](mailto:info@ims-ltd.ie) website; [www.ims-ltd.ie](http://www.ims-ltd.ie)



MC 1050-30T

100ft TRACK CONVEYOR  
42 INCH BELT

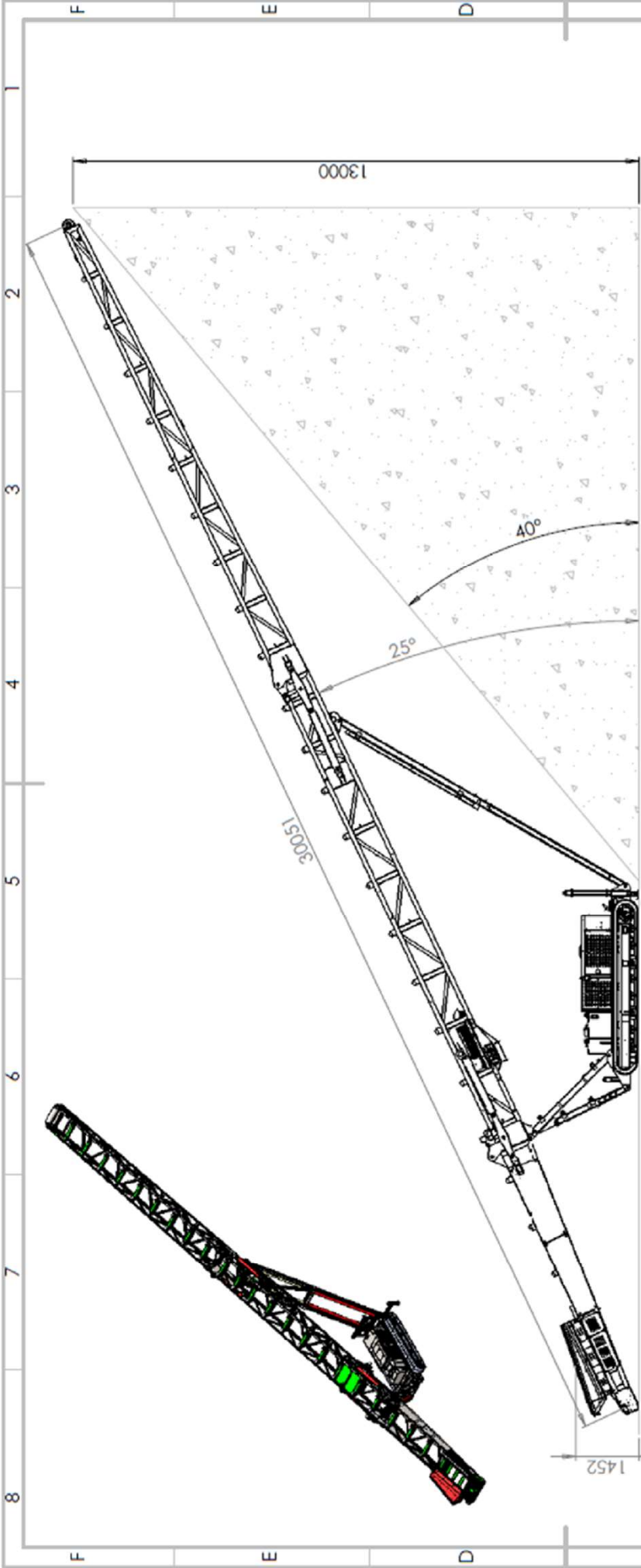


 YouTube

**SEARCH**

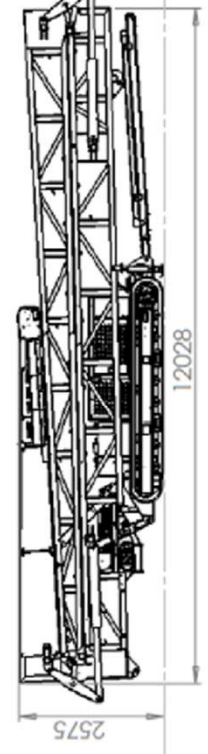
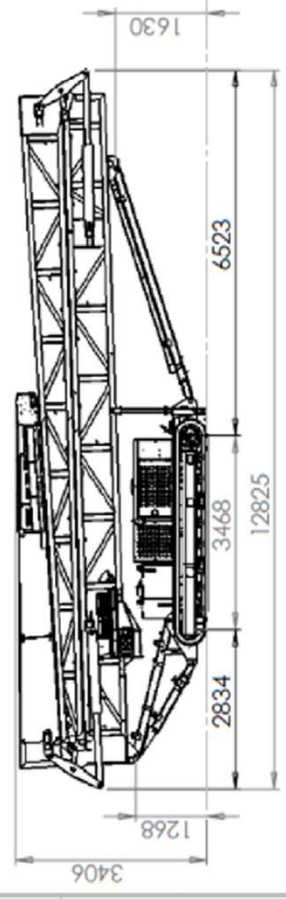
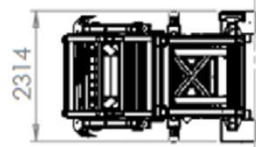
IMS MC1050-30T





**Max working mode**

**Transport mode**



**Container mode**

DO NOT SCALE DRAWING		REVISION	
FINISH		REMOVE AND BREAK SHARP EDGES	
UNLESS OTHERWISE SPECIFIED: DIMENSIONS ARE IN MILLIMETERS. DIMENSIONS IN PARENTHOSES ARE FOR REFERENCE ONLY. LINEAR: ANGULAR:			
NAME	SIGNATURE	DATE	TITLE
DRWN			MC1050-30T (CAT3.4)
CHKD			IMS-24486
APP'D			DWG. NO.
MFD			SCALE 1:50
Q.A.			SHEET 1 OF 1
			WEIGHT



### **Heavy Duty Construction**

Heavy Duty lattice angle construction to give added stability and to withstand the rigours of heavy duty operation.

### **Conveyor**

The conveyor is constructed in 3 sections, the tail section includes a generous feed hopper and the head section includes the conveyor drive, consisting of twin Sauer-Danfoss hydraulic motors coupled to a rubber lagged drive pulley.

### **Diesel-Hydraulic Power Unit**

The conveyor is powered by a Caterpillar 74kw water cooled Diesel Engine coupled to a tandem hydraulic pump giving sufficient oil flow to drive both the conveyor at maximum output and to operate the crawler tracks.

### **Undercarriage**

The undercarriage consists of the hydraulically operated crawler tracks together with an adjustable support trestle arrangement, which allows variation in both feed and discharge heights.

### **Hydraulic Folding Mechanism**

The folding mechanism of the conveyor head and tail sections allow for quick site set up and provides a flexible approach to transport of the unit. The hydraulic folding is designed so that the hydraulic cylinder piston rods are fully protected when the machine is operational.

### **Emergency Stop System**

Every MC1050-30T track Conveyor is equipped from the factory with an emergency stop system that will render the plant inoperable when activated, providing added safety for the operator.





### Standard Features

- Crawler Track Movement
- 74 kw Diesel-Hydraulic Drive
- 1050mm (42") wide 3 ply belt
- Hydraulic Folding on Head Section
- Hydraulic Folding of Tail Section
- Hydraulic Raise and Lower



### Options

- Heavy Duty Belt
- Chevron Belt
- Feed Impact Bars
- Conveyor Belt Variable Speed Control
- Dual Power: Electric & Diesel / Hydraulic Power Unit
- PVC covers
- Steel skirting full length of conveyor
- Galvanised Steel Covers
- Pull Cord Emergency Stops
- Feedboot Mild Steel Wear Plates
- Feedboot Hardox Wearplates
- Feedboot Extensions
- Radio Remote Control
- 48 Inch Belt Option
- Onboard Genset Image Shown







## Specifications

Operational Length	30M (100')
Operational Height	13M (42'8")
Loading Height	1.2M-3.4M (4'0"-11'3")
Hydraulic Tank Capacity	377 l (83 Gallon)
Diesel Fuel Capacity	216 l (48 Gallon)
Engine	Caterpillar
Engine Power	74kw (100HP)
Transport Width	2.25M (7' 4")
Transport Height	2.5M (8' 2")
Transport Length	12.2M (40' 3")
Total Weight	13200 kgs (29040 lbs)



*Due to Irish Manufacturing Services Limited's policy of continuing product improvements, Specifications are subject to change without notice or obligation. No representation is made that the products depicted herein comply with any laws, codes, rules, regulations or standards. Compliance is the responsibility of the user. Additional safety equipment may be required by the particular location and application of product.*

**Irish Manufacturing Services Limited**

34 Dunroe Road, Clogher, Co. Tyrone, N. Ireland BT76 0DZ

Tel. +44 (0)28 8554 9656 E-mail [info@ims-ltd.ie](mailto:info@ims-ltd.ie) website;  
[www.ims-ltd.ie](http://www.ims-ltd.ie)



MC1050-20WR

## Wheel Radial Conveyor



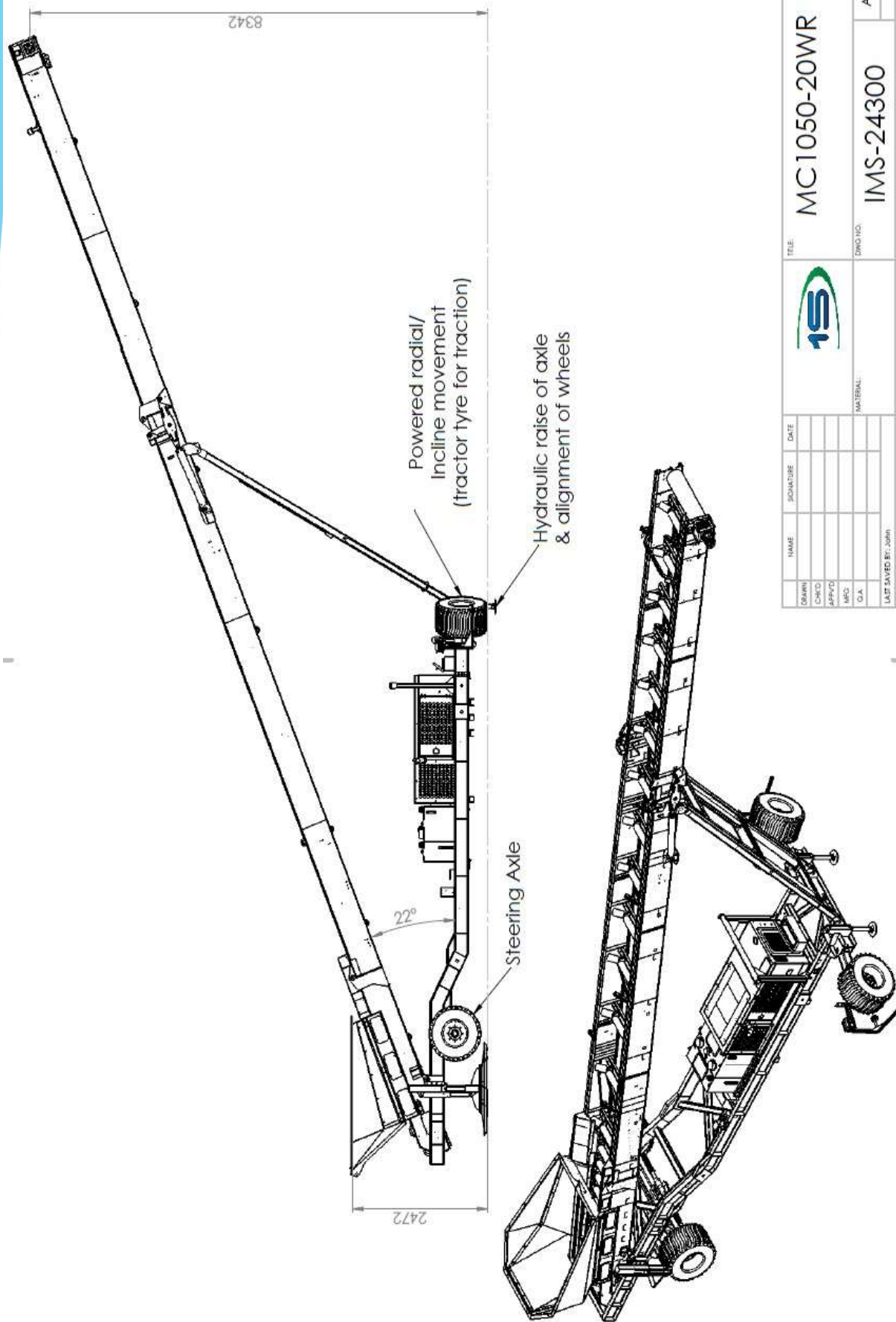
 YouTube


**SEARCH**

MC1050-20WR



A leading manufacturer of screening and conveyor equipment, offer the MC1050-20WR wheel stacking conveyor, the ideal conveyor for handling wood chip, mulch, and recycled waste timber



FILE:	MC1050-20WR	DWG NO:	IMS-24300	SHEET 1 OF 1
		MATERIAL:		
NAME:	SIGNATURE:	DATE:		
DRAWN:	CHECKED:	APPROVED:		
REV:	REV:	REV:		
DATE:	DATE:	DATE:		
LAST SAVED BY: JOHN		WEIGHT: 9843077.49		
LAST SAVED DATE: 01/10/2018				





### **Heavy Duty Construction**

Constructed from 5mm thick MS plate designed in 500mm deep section to give added stability and to withstand the rigours of heavy duty operation

### **Conveyor**

The conveyor is constructed in 3 sections , the tail section includes a generous feed hopper and the head section includes the conveyor drive , consisting of a Sauer-Danfoss hydraulic motor and rubber lagged drive pulley

### **Diesel-Hydraulic Power Unit**

The conveyor is powered by a 38 kw Diesel Engine coupled to a tandem hydraulic pump giving sufficient oil flow to drive both the conveyor at maximum output and to operate the magnet

### **Radial Operation**

The Radial Operation is facilitated by 2 445/55 x 22.5 Super Single wheels mounted in radial alignment. One of the wheels is driven by a Brevini geared hydraulic motor to provide radial movement. The radial wheels are retracted via hydraulic cylinders to transform the machine to road transport mode

### **Road Transport**

The undercarriage consists of a heavy duty chassis with a TUV approved axle with 385/55 x 22.5 Super Single Wheels, VBG approved Tow Hitch, Braking System and approved 24v Lighting System.

### **Hydraulic Folding Mechanism**

The folding mechanism of the conveyor head section allows for quick site set up and provides a flexible approach to transport of the unit. The hydraulic folding is designed so that the hydraulic cylinder piston rods are fully protected when the machine is operational

### **Emergency Stop System**

Every MC1050-20WR Conveyor is equipped from the factory with an emergency stop system that will render the plant inoperable when activated, providing added safety for the operator



## Standard Features

38 kw Diesel-Hydraulic Drive  
1050mm (42") wide 3 ply belt  
Hydraulic Folding on Head Section  
Hydraulic Raise and Lower  
Manual Folding of Tail Section

## Options

Heavy Duty Belt  
Chevron Belt  
Conveyor Belt Variable Speed Control  
PVC covers  
Galvanised Steel Covers  
Feedboot Mild Steel Wear Plates  
Feedboot  
Hardox Wearplates  
Feedboot Extensions  
Twin Electric Drive  
Impact Rollers  
Overband Magnet  
15m Version (image below)





## Specifications

Operational length	20M (65')
Operational height	9.16M (30') At maximum height (26°) chevron belt may be required
Loading height	1.2M (4'0")
Hydraulic tank capacity	320 l (70 gallon)
Diesel fuel capacity	155 l (35 gallon)
Engine	Caterpillar Liquid Cooled
Engine power (horsepower)	38kw (51 HP)
Transport width	2.5 M (8'0")
Transport height	4.0 M (13' 2")
Transport length	14.9M (49'0")
Total weight	12640kgs (27800 lbs)
Axle Weight	9440kgs (20770 lbs)

*Due to Irish Manufacturing Services Limited's policy of continuing product improvements, Specifications are subject to change without notice or obligation. No representation is made that the products depicted herein comply with any laws, codes, rules, regulations or standards. Compliance is the responsibility of the user. Additional safety equipment may be required by the particular location and application of product.*

**Irish Manufacturing Services Limited**

**34 Dunroe Road, Clogher, Co. Tyrone, N. Ireland BT76 0DZ**

**Tel. +44 (0)28 8554 9656 E-mail [info@ims-ltd.ie](mailto:info@ims-ltd.ie) website; [www.ims-ltd.ie](http://www.ims-ltd.ie)**



## Wheel Conveyors

IMS offer a wide range of static and wheeled radial conveyors.

For more information contact IMS on contact details provided below.



Irish Manufacturing Services Limited  
34 Dunroe Road, Clogher, Co. Tyrone, N. Ireland  
BT76 0DZ  
Tel. +44 (0)28 8554 9656 E-mail [info@ims-ltd.ie](mailto:info@ims-ltd.ie)  
website; [www.ims-ltd.ie](http://www.ims-ltd.ie)



