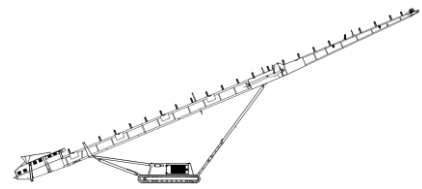


SPECIFICATIONS

ST100TV



SOME OPTIONAL EQUIPMENT MAY BE SHOWN

**DESCRIPTION**

Heavy duty mobile tracked stockpiling conveyor with following features:

- 900mm (36") wide heavy duty 100' long conveyor.
- 67Kw (90Hp) Kubota diesel engine.
- Track mobile.
- Direct feed hopper
- Hydraulic folding for easy transport.
- Fast on site setup time – 5 minutes.
- Excellent service room inside Powerpack.

DIMENSIONS AND WEIGHTS

Length – working	30.7m (101')
Width – working	2.6m (8' – 6")
Length – transport	21.5m (70'-6")
Width – transport	2.6m (8' – 6")
Height – transport	3.4m (11' – 2")
Weight - transport	12,725kg (28,000lbs)

CAPACITIES

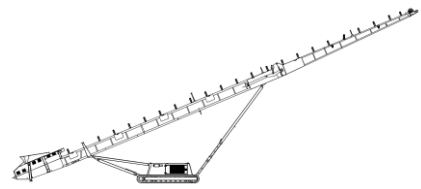
Diesel tank capacity	211 L (55.7 US gal)
Hydraulic tank capacity	380 L (100 US gal)
Production	500TPH Standard

CONVEYOR

Belt width	900mm (36")
Belt length	30.48m (100') drum centers
Belt spec	Heavy Duty Plain 400/3 5+1.5
Drive drum dia.	406mm (16")
Tail drum dia.	304mm (12")
Motor	Eaton VIS40 – 935cc (57ci)
Flow rate	142 lpm (37.5 US gpm)
Drive drum maximum speed	152 rpm
Belt maximum speed	167m/min (548 ft/min)
Stockpile height	12.6m (41'-3")
Stockpile capacity	3645 cu.m (4767)cu. Yds

POWERUNIT AND HYDRAULICS

Engine	Kubota V3600T
Engine power	67kW (90Hp)
Engine speed	2200 rpm
Flywheel Pump	Permco Cast Iron 3.94 cu.in
Total system flow	140 Lpm (37 US gpm)
Hydraulic tank capacity	380 L (100 US gal)
Hydraulic Oil cooler	YES

**ELECTRICS**

Start Siren	YES – 10 sec delay
Engine shutdowns:	Low oil pressure
	High engine temp
Radio control tracks	Optional

TRACKS

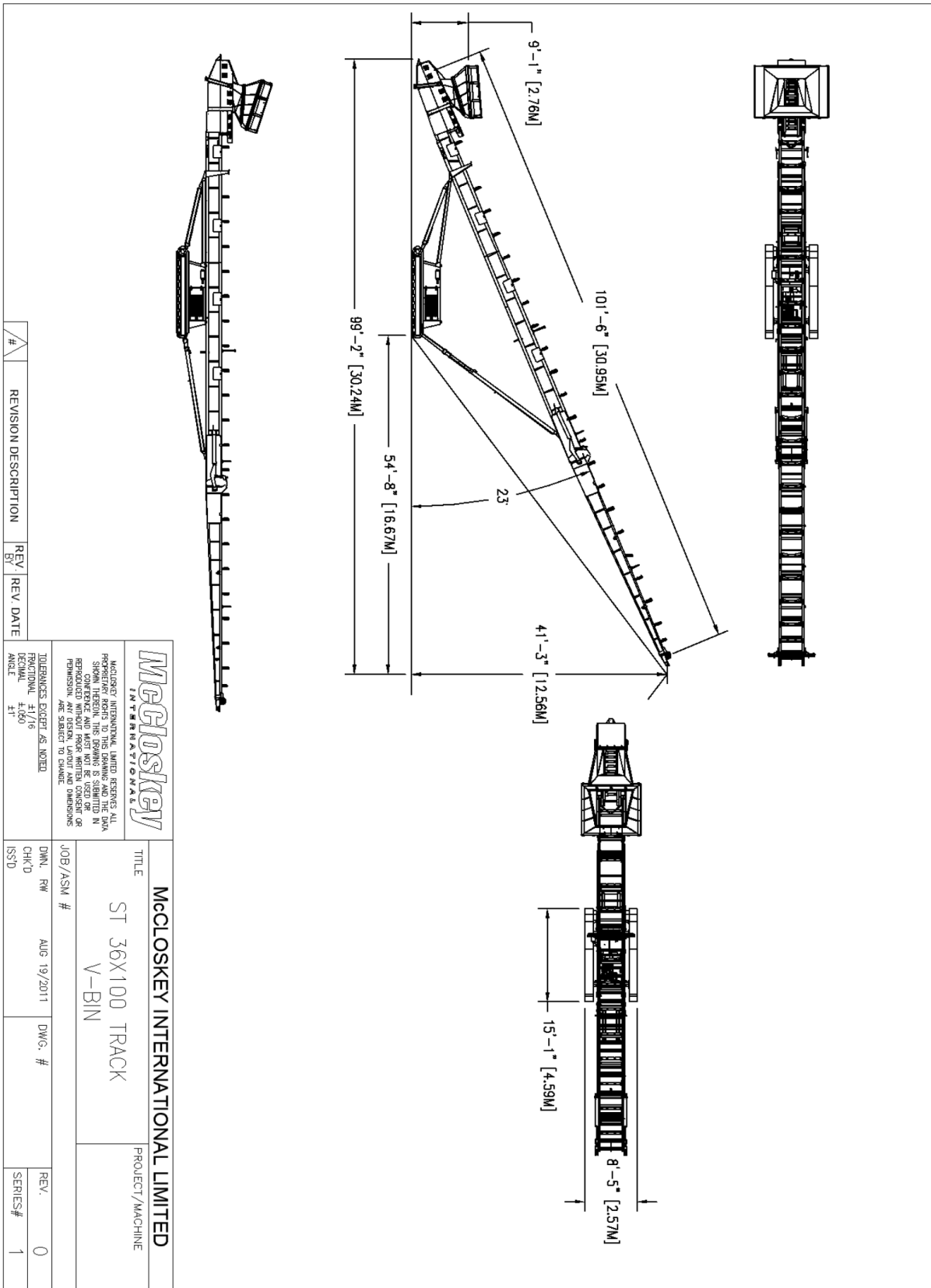
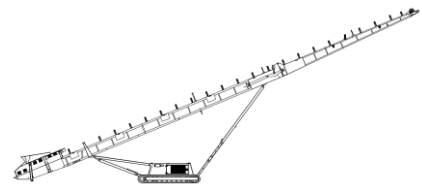
Width	400mm (1'-3-3/4")
Length	2970mm (9' – 9") centers
Height	594mm (2' – 5")
Speed max	1.2km / hour
Flow rate	56 Lpm (15.7 US gpm)
Attachment to chassis	Bolt On for quick change

OPTIONS

Dual Power
Chevron Belt
Hopper Wear Plate Liner
Hopper Rubber Liner
Anti-Segregation Paddle Wheel
Belt Scale
Martin Scraper

SAFETY FEATURES

External belt alignment points.
External grease points.
Engine safety shutdown systems.
Full safety guarding for nip points.



#	REVISION DESCRIPTION	REV	REV DATE

		<p>McCloskey INTERNATIONAL LIMITED RESERVES ALL RIGHTS IN THIS DRAWING AND THE DATA HEREIN. NO PART OF THIS DRAWING OR THE DATA HEREIN MAY BE REPRODUCED OR TRANSMITTED IN ANY FORM OR BY ANY MEANS, ELECTRONIC OR MECHANICAL, INCLUDING PHOTOCOPYING, RECORDING, OR BY ANY INFORMATION STORAGE AND RETRIEVAL SYSTEM, WITHOUT PRIOR WRITTEN CONSENT OR PERMISSION. ANY SUCH REPRODUCTION OR TRANSMISSION IS STRICTLY PROHIBITED.</p>	
<p>TOLERANCES EXCEPT AS NOTED: DIMENSIONAL ±.000 HOLE ±.005 ANGLE ±1°</p>		<p>JOB/ASM #</p>	
<p>DMNL. RW</p>		<p>AUG 19/2011</p>	
<p>CHK'D</p>		<p>DWG. #</p>	
<p>ISS'D</p>		<p>REV. 0</p>	
<p>TITLE</p> <p>ST 36X100 TRACK V-BIN</p>		<p>PROJECT/MACHINE</p> <p>McCloskey INTERNATIONAL LIMITED</p>	
<p>SERIES#</p> <p>1</p>		<p> </p>	