

Screen 2 Crush Inc. is proud to present...

A New Dawn in **Crushing** and **Screening** equipment



ecotrack - fuel saver

www.screen2crush.com

Your online source for:

Screens, Trommels, Jaw Crushers, Cone Crushers, Impact Crushers, HSI & VSI Crushers, Tub Grinders, Horizontal Grinders, Slow Speed Shredders, Radial Stacking Conveyors, Picking/Recycling Stations, Screening/Crushing bucket attachments and Material Washing Systems.

NEW EQUIPMENT BRANDS WE CARRY:

MCCLOSKEY INTERNATIONAL, LIPPMANN-MILWAUKEE, COREX, FLIP SCREEN, EZ SCREEN, TRACK STACK, EMS PICKING STATION

PREVIOUSLY OWNED BRANDS IN STOCK:

Allu, Anaconda, Astec, Backhus, Bandit, Boliden Allis, CDE Global Wash Systems, CEC, Cedarapids, Corex, Diamond Z, Doppstadt, EMS, Extec, EZ Screen, Finlay, Fintec, Flip Screen, HogZilla, JCI-KPI, Keestrack, Kolberg, Lippmann, McCloskey, Metso, Morbark, Nordberg, Pegson, Peterson, Powerscreen, Royer, S2C, Sandvik, Screen USA, Striker, Telsmith, Terex, Trackstack, Triman, Trio.

Please Click on the text to be directed to our website: www.screen2crush.com

The **Company** and the **Future**

The founders of COREX have many years of experience in producing quality Mineral Processing Systems successfully applied around the world. COREX have identified a gap in the market for Large Track Crushing and Screening Equipment without sacrificing portability as would otherwise be a barrier to entry in many international territories where transporting larger systems may be difficult or uneconomical. In the current climate of Global warming COREX have been keen to find ways of reducing the carbon footprint associated with larger mineral processing systems through research and development. COREX have developed some unique features in the design and development of its product line to achieve a reduced carbon footprint.

In primary processing of material, smaller processing systems commonly seen in the market place today require greater preparation of material before being processed, increasing the carbon foot print. COREX systems require little or no preparation of the material in the primary stage drastically reducing the carbon footprint. In addition COREX has developed the proven TPT system fitted on all COREX products reducing diesel fuel consumption by as much as 50% in some cases while achieving increased material production.

COREX is committed to continued product research and development and finding ways of achieving greater production with lower running costs, giving you the customer, a first class product and greater return on your investment.





Power, Strength & Reliability



By combining many years of experience in the construction equipment manufacturing sector, COREX was formed to bring you one of the finest crushing and screening solution providers in recent years with a fresh focus on greater portability of larger systems with increased production capabilities in the aggregate processing arena with a broad spectrum of applications throughout the industry sector.

Our mobile crushing range consists of many solutions suited to applications in quarrying, contracting and recycling including limestone asphalt, construction - demolition waste to hard rock processing.

Our products are sold and supported from manufacturing facilities in the UK, Ireland and a selected global dealer network providing positive reliable parts and after sale service maintaining a world renowned benchmark for quality, reliability and service.



EFFICIENT TRANSPORT “Latch in Bogie System”



Optimum transport and set-up flexibility - minor environmental impact reduced need for site/quarry haul road maintenance, offers greater access to material sources ease of attachment in even or uneven site conditions.

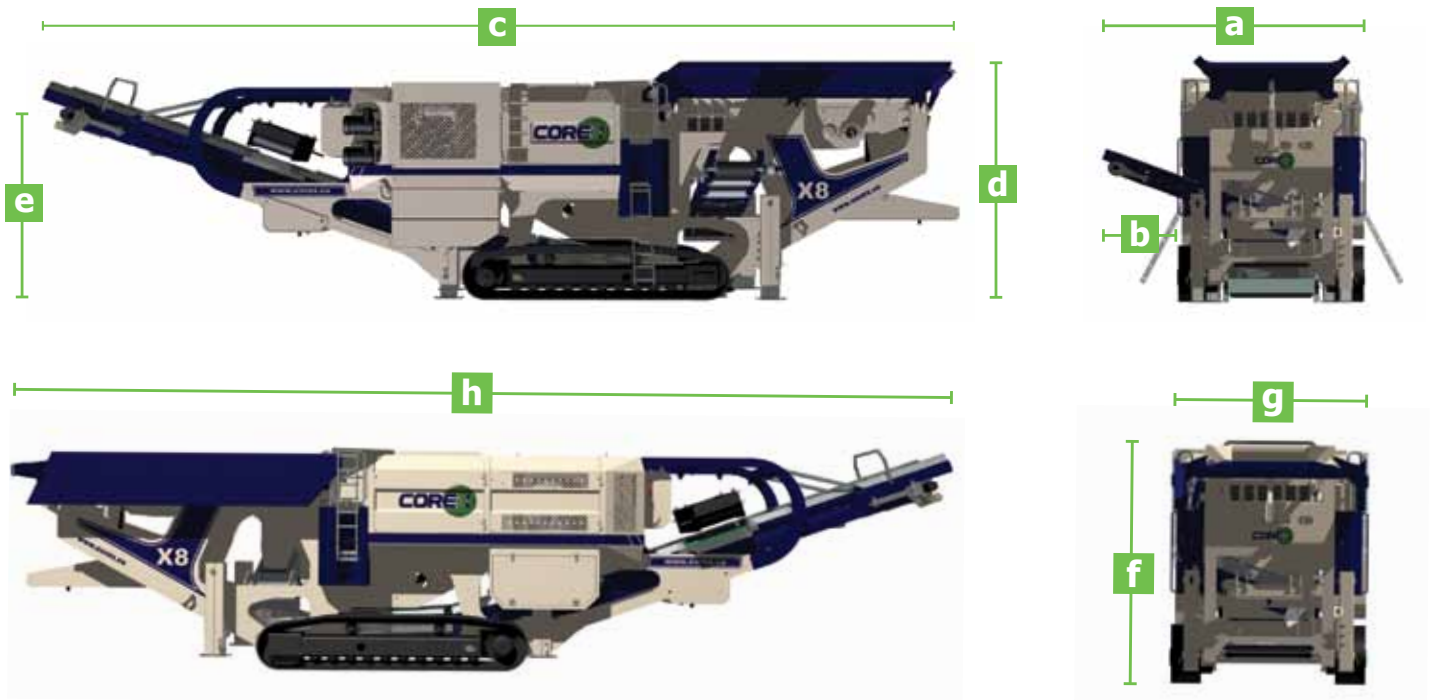
Purposely designed detachable rear and front transport bogies with varying axle group centre combinations best suited to territory sensitive “road transport regulations”.



X8-1

SERIES TRACK JAW

eco**track** - fuel saver



KEY FEATURES

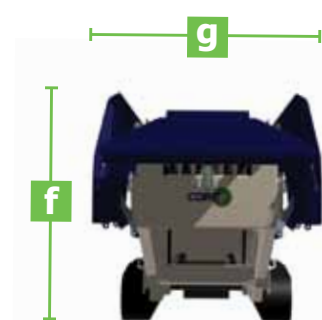
- Triple Power Transmission (TPT) tried and proven power transmission specially designed for crawler crusher use
- Direct crusher drive provides constant power to the jaw - twin VDP pumps for mobility and plant hydraulic drives - all variable
- Reduced fuel consumption
- Greater system efficiency
- Aggressive high production jaw action - hydraulic CSS adjust and tramp release
- TRC modern chassis systems with inbuilt quality and strength for longer life
- Compact design - serviceability friendly - balanced COG
- Conveyor tail hydraulic raise and lower easily removed for maintenance
- Minimum feed material preparation

Working*		OVERALL MEASUREMENTS		
a	W	Width	4617mm	15' 2"
b	W	Dirt Belt	1318mm	52"
c	W	Length	16823mm	55' 2"
d	W	Height	4664mm	15' 3"
e	W	Discharge	3664mm	12' 1"
f	T	Height	4164mm	13' 6"
g	T	Width	3243mm	10' 6"
h	T	Length	16823mm	55' 6"
i	W	Feeder	5000mm	16' 5"
j	W	Jaw X8 J-1480	1400 x 800mm	54" x 34"
k	T	Weight	61000kg	134000lbs

X8-2LC

EXTENDED TRACK JAW

eco**track** - fuel **saver**



KEY FEATURES

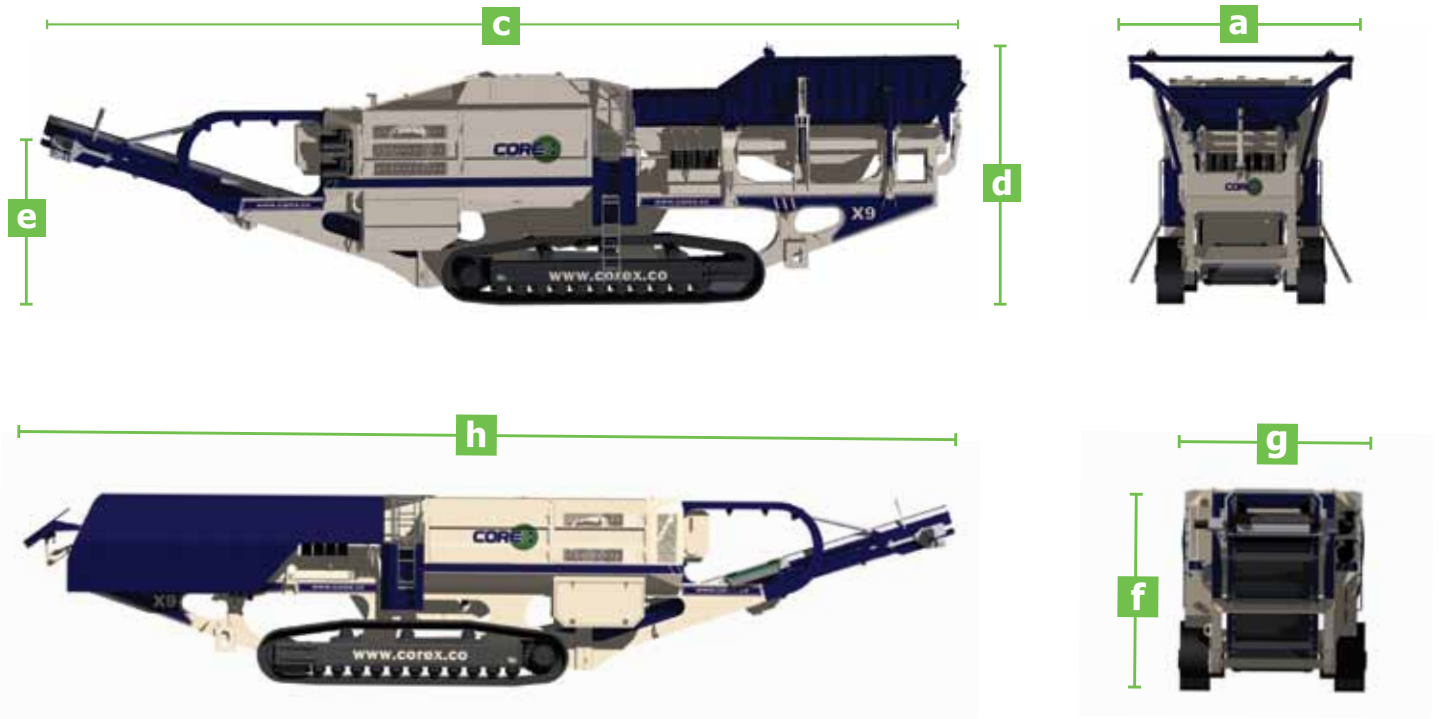
- Triple Power Transmission (TPT) tried and proven power transmission specially designed for crawler crusher use
- Direct crusher drive provides constant power to the jaw - twin VDP pumps for mobility and plant hydraulic drives all variable
- Reduced fuel consumption
- Greater system efficiency
- Aggressive high production jaw action - hydraulic CSS adjust and tramp release
- Longer feeder in its class - hopper extensions - rear or side load - quarry spec
- TRC modern chassis systems with in-built quality and strength for longer life
- Compact design - serviceability friendly - balanced COG
- Conveyor tail hydraulic raise and lower - easily removed for service
- Minimum preparation of feed material

Working* Transport*				
OVERALL MEASUREMENTS				
a	W	Width	4678mm	15' 5"
b	W	Dirt Belt		
c	W	Length	18100mm	59' 6"
d	W	Height	4947mm	16' 3"
e	W	Discharge	3364mm	12' 1"
f	T	Height	4063mm	13' 4"
g	T	Width	3270mm	10' 9"
h	T	Length	18991mm	62' 4"
i	W	Feeder	6000mm	20'
j	W	Jaw X8 J-1480	1400 x 800mm	54" x 34"
k	T	Weight	72000kg	158400lbs

X9

TRACK JAW

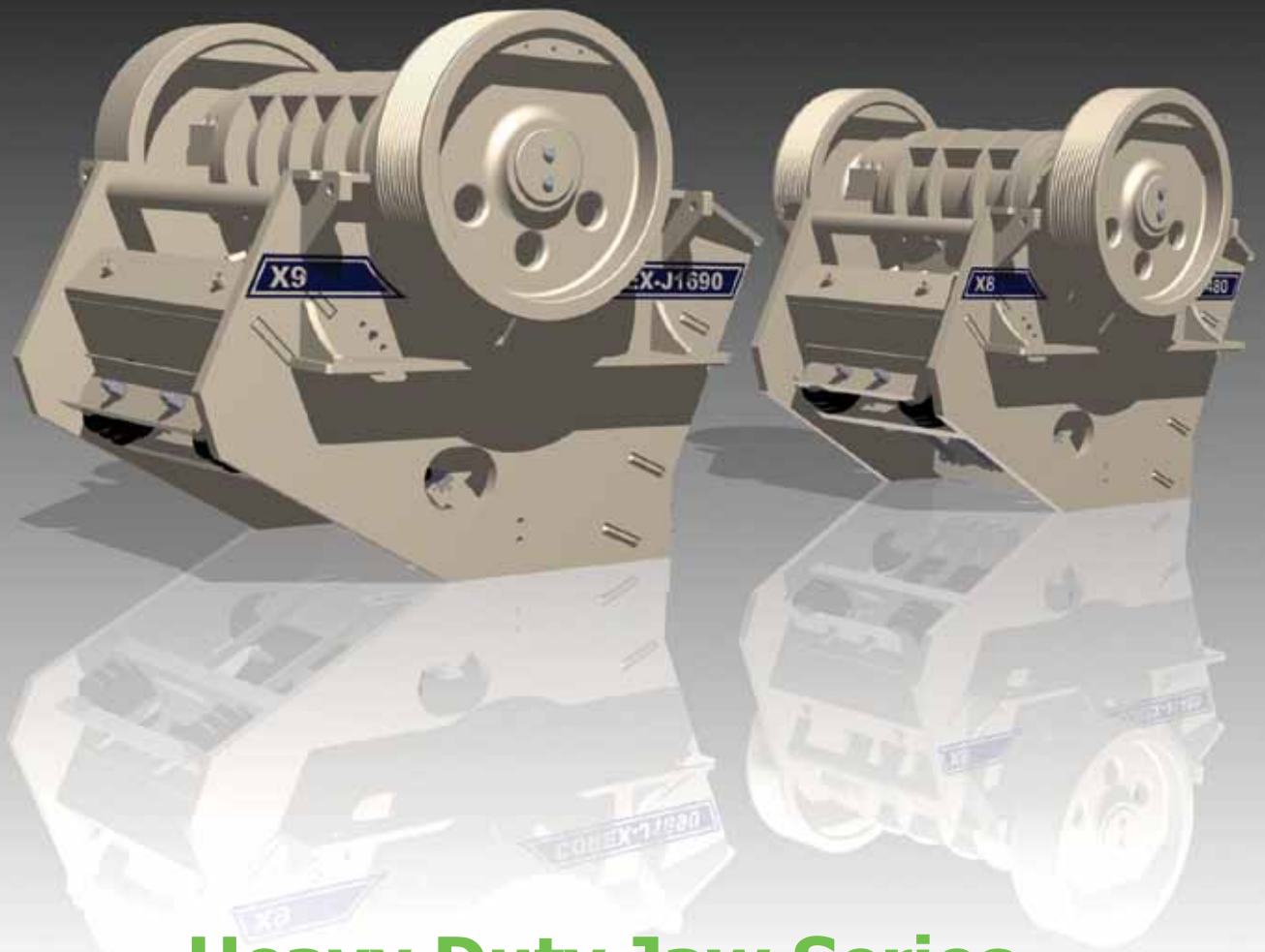
eco**track** - fuel saver



KEY FEATURES

- Triple Power Transmission (TPT) tried and proven power transmission specially designed for crawler crusher use
- Direct crusher drive provides constant power to the jaw twin VDP pumps for mobility and plant hydraulic drives all variable
- Reduced fuel consumption greater system efficiency
- Aggressive high production jaw action - hydraulic CSS adjust and tramp release
- Longer feeder in its class - hopper extensions - rear or side load - quarry spec
- TRC modern chassis systems with in-built quality and strength for longer life
- Compact design - serviceability friendly- balanced COG
- Conveyor tail hydraulic raise and lower - easily removed for service
- Minimum preparation of feed material

Working* Transport*				
OVERALL MEASUREMENTS				
a	W	Width	5100mm	16' 7"
b	W	Dirt Belt		
c	W	Length	18982mm	62' 2"
d	W	Height	4947mm	16' 3"
e	W	Discharge	4703mm	10' 11"
f	T	Height	4063mm	13' 4"
g	T	Width	3777mm	12' 3"
h	T	Length	19794mm	64' 11"
i	W	Feeder	6000mm	20'
j	W	Jaw X9 J-1690	1600 x 900mm	64" x 35"
k	T	Weight	78000kg	171000lbs



Heavy Duty Jaw Series Hydraulic Adjust-Tramp Release



X8 J-1480 (1400 x 800mm/54" x 34")



X9 J-1690 (1600 x 900mm/64" x 35")

X1418

IMPACTOR SERIES

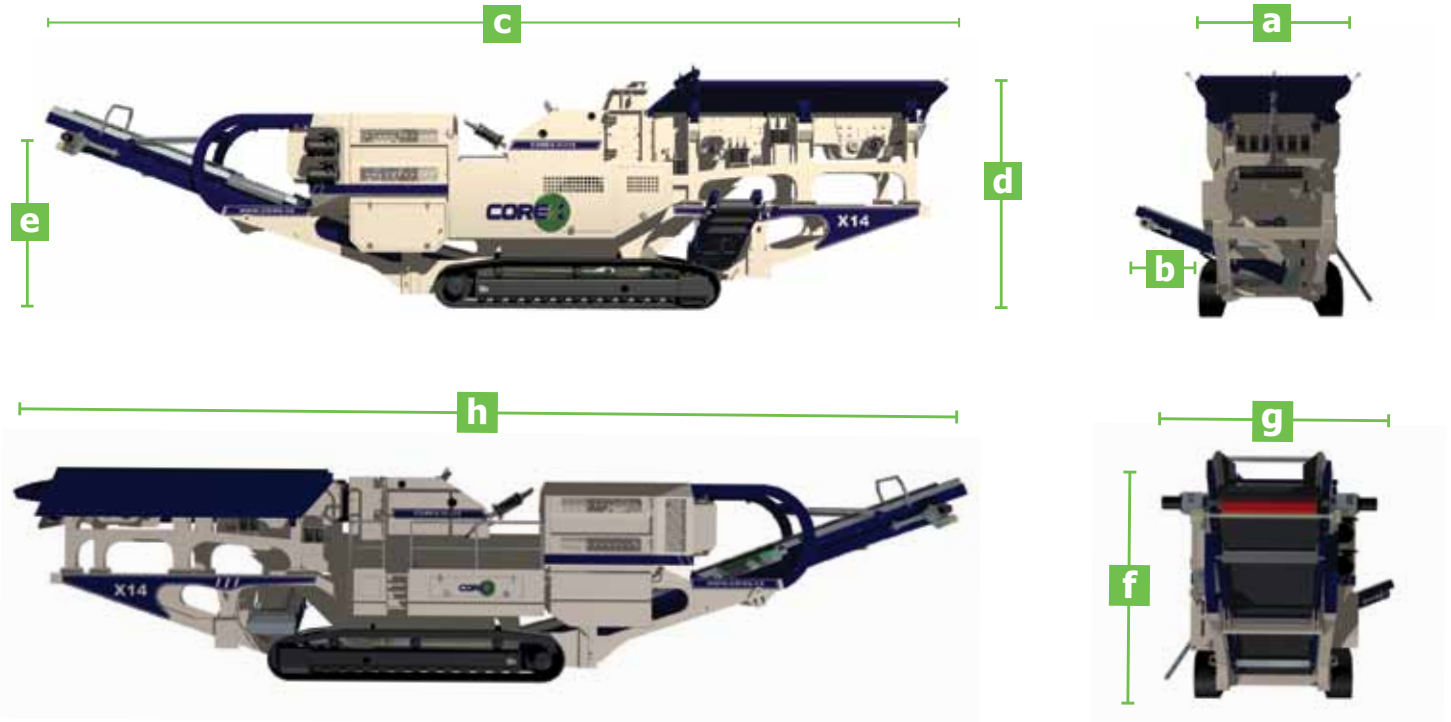
PRODUCT RANGE



X14-2LC

PRIMARY IMPACTOR SERIES

eco**track** - fuel **saver**



KEY FEATURES

- Triple Power Transmission (TPT) tried and proven power transmission specially designed for crawler crusher use
- Direct crusher drive provides constant power to the impactor - twin VDP pumps for mobility and plant hydraulic drives "all variable"
- Reduced fuel consumption
- Greater system efficiency
- Heavy duty modern design impactor
- Independent feeder, double deck scalper or roller grizzly feeder combinations
- TRC modern chassis systems with in-built quality and strength for longer life
- Compact design - serviceability friendly- balanced COG
- Conveyor tail hydraulic raise and lower - easily removed for service

Working*		Transport*		OVERALL MEASUREMENTS	
a	W	Width	4336mm	14' 2"	
b	W	Dirt Belt	1096mm	3' 6"	
c	W	Length	17780mm	58' 3"	
d	W	Height	4512mm	14' 10"	
e	W	Discharge	3260mm	10' 9"	
f	T	Height	4063mm	13' 4"	
g	T	Width	3236mm	10' 6"	
h	T	Length	18180mm	59' 6"	
i	W	Feeder	5650mm	18' 8"	
j	W	Impactor	1420 x 1309mm	56" x 51"	
k	T	Weight	61000kg	134000lbs	

OPTIONAL EQUIPMENT

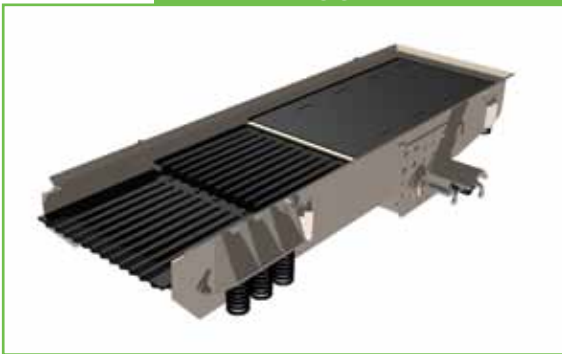
LATCH ON BOGIES



LATCH ON JEEP



VIBRATING GRIZZLY FEEDER



INDEPENDENT VIBRATING SCALPER & FEEDER



ROLLER GRIZZLY FEEDER (RGF) COMBINATION



FULL LENGTH RGF FOR WET/STICKY/FINE MATERIAL



HAMMER & BOOM



FULLY ELECTRIC-DIESEL MOBILITY



Many more options and combinations available, contact COREX staff for more details.

ecotrack - fuel **saver** = lower cost per ton produced

**HYDRAULIC FOLDING HOPPER
OPTIONAL EXTENSIONS**

**LONG TWO STEP
GRIZZLY CASSETTE**

FINES BELT

**BIG JAW OPENING
- DEEP CHAMBER -
AGGRESSIVE JAW
ACTION**

**WELL
BALANCED
COG**

**DIRECT CRUSHER
DRIVE AUTOMATIC
STOP/START**

**GROUND LEVEL
CONTROL - CORD
& REMOTE**

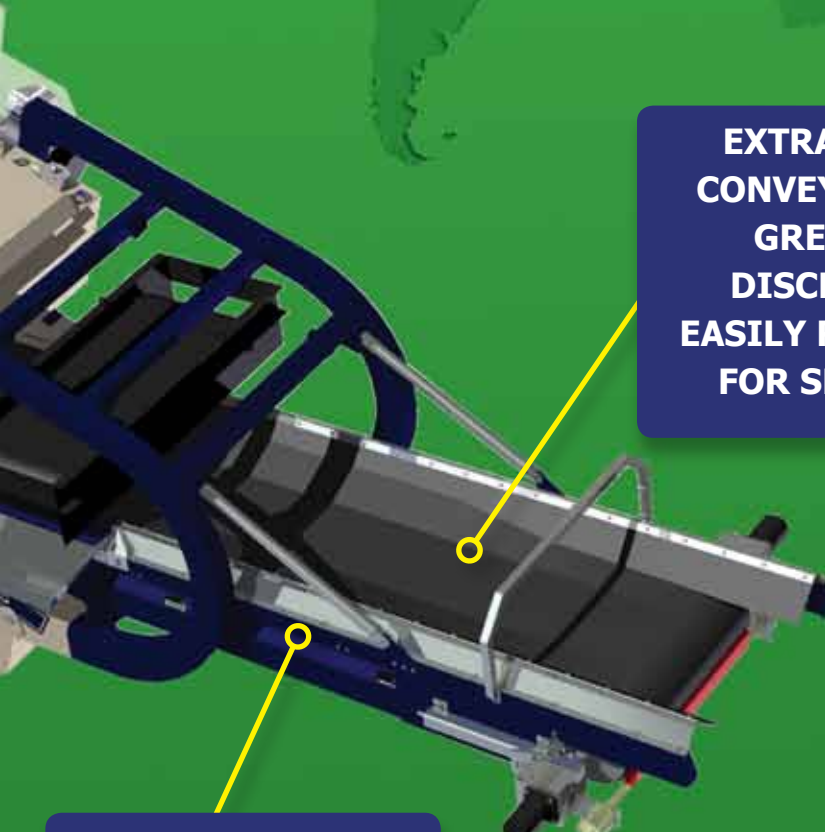




**EASY ACCESSIBLE
ENGINE -
CRUSHER
BAY FOR SERVICE
& MAINTENANCE**

**EXTRA WIDE
CONVEYOR FOR
GREATER
DISCHARGE
EASILY REMOVED
FOR SERVICE**

**NIP POINTS WELL
GUARDER**



SPARES & BACK UP

WE STOCK ----- QUALITY ----- GENUINE ----- PARTS ----- FULLY TESTED



All COREX built systems are backed by our genuine spares and wear parts service and technical support when ever you need it wherever you are located. We carry inventory of all major components for all models. Our proven system designs have stood the test of time, maintaining consistency in design and spare parts.

COREX is expanding its international sales and market development capabilities. Additional plans are underway for increased strategic service and parts back up, as well as stocking distributors.



EUROTRACK inc.
Complete Machine Systems

Tel: 00 1 851 851 8701
Fax: 00 1 851 851 8088
Email: info@eurotrack-systems.com
Web: www.eurotrack-systems.com

Eurotrack Inc. 755 New York Avenue
Suite 310 Huntington NY 11743 USA

Track Model:
Serial Number:
Date of Manufacture:
Weight (pair) Kg:
Inspected By:

COREX use quality branded components throughout our products.



ecotrack - fuel saver



The **ecotrack** system means greater production with less fuel, helping you run a leaner, greener business model. All COREX products are **ecotrack** enabled giving you, the customer, a first class return on investment.

**From
dawn to
dusk** 
**will keep
you producing
greener and leaner**

COREX: Note ! The material in this specification is for general information and guidance only and no representation is made or given by COREX that its products will be suitable for a user's particular purpose and inquiries should always be made of COREX to ensure suitability at all times .Whilst reasonable efforts have been made in preparation of this document to ensure its accuracy COREX assumes no liability resulting from errors or omissions in this document or from the use or interpretation of the information contained herein. COREX reserves the right to change or omit information and product designs in this document without reservation and without notification to users.

www.screen2crush.com

Your online source for:

Screens, Trommels, Jaw Crushers, Cone Crushers, Impact Crushers, HSI & VSI Crushers, Tub Grinders, Horizontal Grinders, Slow Speed Shredders, Radial Stacking Conveyors, Picking/Recycling Stations, Screening/Crushing bucket attachments and Material Washing Systems.

NEW EQUIPMENT BRANDS WE CARRY:

MCCLOSKEY INTERNATIONAL, LIPPMANN-MILWAUKEE, COREX, FLIP SCREEN, EZ SCREEN, TRACK STACK, EMS PICKING STATIONS.

PREVIOUSLY OWNED BRANDS IN STOCK:

Allu, Anaconda, Astec, Backhus, Bandit, Boliden Allis, CDE Global Wash Systems, CEC, Cedarapids, Corex, Diamond Z, Doppstadt, EMS, Extec, EZ Screen, Finlay, Fintec, Flip Screen, HogZilla, JCI-KPI, Keestrack, Kolberg, Lippmann, McCloskey, Metso, Morbark, Nordberg, Pegson, Peterson, Powerscreen, Royer, S2C, Sandvik, Screen USA, Striker, Telsmith, Terex, Trackstack, Triman, Trio.

Please Click on the text to be directed to our website: www.screen2crush.com